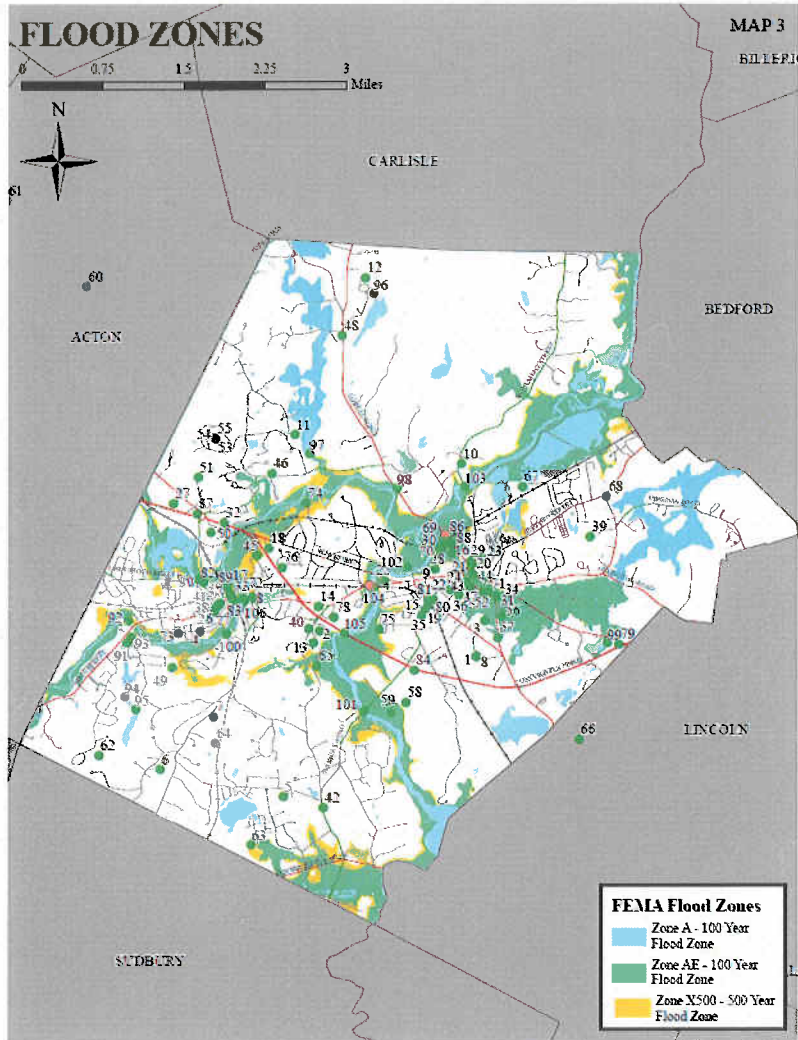


TOWN OF CONCORD HAZARD MITIGATION PLAN



August 23, 2010

ACKNOWLEDGEMENTS AND CREDITS

This plan was prepared for the Town of Concord by the Metropolitan Area Planning Council (MAPC) under the direction of the Massachusetts Emergency Management Agency (MEMA) and the Massachusetts Department of Conservation and Recreation (DCR). The plan was funded by the Federal Emergency Management Agency's (FEMA) Pre-Disaster Mitigation (PDM) Grant Program.

MAPC Officers

President:	Jay Ash
Vice President:	Michelle Ciccolo
Secretary:	Marilyn Contreas
Treasurer:	Grace Shepard
Executive Director:	Marc D. Draisen

Credits

Project Manager:	Martin Pillsbury
Lead Project Planner:	Christine Wallace, P.E.
Mapping/GIS services:	Allan Bishop and Susan Brunton

Massachusetts Emergency Management Agency

Director:	Don Boyce
-----------	-----------

Department of Conservation and Recreation

Commissioner:	Richard Sullivan
---------------	------------------

Town of Concord Fire Department

Fire Chief:	Kenneth Willette
-------------	------------------



TABLE OF CONTENTS

I.	Introduction	6
	Planning Requirements under the Federal Disaster Mitigation Act	
	What is Hazard Mitigation?	
II.	Community Profile	8
	Overview	
	Existing Land Use	
	Potential Future Land Use	
III.	Public Participation	14
	Concord's Participation in the Regional Committee	
	The Local Multiple Hazard Community Planning Team	
	Public Meeting	
IV.	Overview of Hazards and Vulnerabilities	16
	Overview of Hazards and Impacts	
	Critical Facilities Infrastructure in Hazard Areas	
	Potential Damages to Existing Development	
	Potential Impacts to Future Development	
V.	Hazards and Existing Mitigation Measures	36
	Flood-Related Hazards	
	Wind-Related Hazards	
	Winter-Related Hazards	
	Fire-Related Hazards	
	Geologic Hazards	
	Other Hazards – Bridge Weight Restrictions	
	Existing Multi-Hazard Mitigation Measures	
	Compilation of Existing Mitigation	
VI.	Hazard Mitigation Goals and Objectives	53
VII.	Potential Mitigation Measures	55
	What is Hazard Mitigation?	
	Identification of Potential Mitigation Measures	
	High Priority Mitigation Measures	
	Medium Priority Mitigation Measures	
	Other Potential Mitigation Measures	
	Potential Mitigation Summary Table	
VIII.	Regional and Inter-Community Considerations	63
	Regional Partners	
	Regional Facilities within Concord	
	Inter-Community Considerations	
IX.	Plan Adoption and Maintenance	65
	Plan Adoption	
	Plan Maintenance	
	Implementation Schedule	
	Integration of the Plans with Other Planning Initiatives	
X.	Resources	67

LIST OF TABLES

- Table 1: Concord Characteristics from 2000 Census
- Table 2: Existing Land Use in Concord, 1999
- Table 3: Buildout Impacts in Concord, MAPC Analysis
- Table 4: Attendance at the Concord Local Multiple Hazard Community Planning Team Meetings
- Table 5: Attendance at the April 7, 2008 Board of Selectmen's Meeting
- Table 6: Frequency and Severity of Natural Hazards in the State
- Table 7: Disaster and Emergency Declarations for Middlesex County
- Table 8: Flood Insurance Policies and Claims in Concord
- Table 9: Relationship of Critical Facilities and Selected Hazard Types in Concord
- Table 10: Estimated Damage in Concord from a Category 2 or 4 Hurricane
- Table 11: Estimated Damage in Concord from a Magnitude 5.0 and 7.0 Earthquake
- Table 12: Estimated Damages from Flooding in Concord
- Table 13: Relationship of Potential Development in Hazard Areas in Concord
- Table 14: Existing Natural Hazard Mitigation Measures in Concord
- Table 15: Potential Mitigation Measures in Concord

APPENDICES

- Appendix A: Natural Hazards Maps
- Appendix B: Meeting Agendas for Metro Boston North/West Regional Hazard Mitigation Community Planning Team and the Local Multiple Hazard Community Planning Team
- Appendix C: Documentation of the Public Meeting
- Appendix D: Documentation of Plan Adoption by the Board of Selectmen

I. INTRODUCTION

Planning Requirements under the Federal Disaster Mitigation Act

The Federal Disaster Mitigation Act, passed in 2000, requires that after November 1 2004, all municipalities that wish to continue to be eligible to receive Federal Emergency Management Agency (FEMA) funding for hazard mitigation grants, must adopt a local multi-hazard mitigation plan. This planning requirement does not affect disaster assistance funding.

Massachusetts has taken a regional approach and has encouraged the regional planning agencies to apply for grants to prepare plans for groups of their member communities. The Metropolitan Area Planning Council (MAPC) received a grant from the Federal Emergency Management Agency (FEMA) under the Pre-Disaster Mitigation (PDM) Program, to assist the Town of Concord and 24 other communities develop their local Hazard Mitigation Plans. The local Hazard Mitigation Plans produced under this grant are designed to meet the requirements of the Disaster Mitigation Act for each community.

What is Hazard Mitigation?

Natural hazard mitigation planning is the process of figuring out how to reduce or eliminate the loss of life and property damage resulting from natural hazards such as floods, earthquakes and hurricanes. Hazard mitigation means to permanently reduce or alleviate the losses of life, injuries and property damage resulting from natural hazards through long-term strategies. These long-term strategies can include planning, policy changes, programs, projects and other activities.