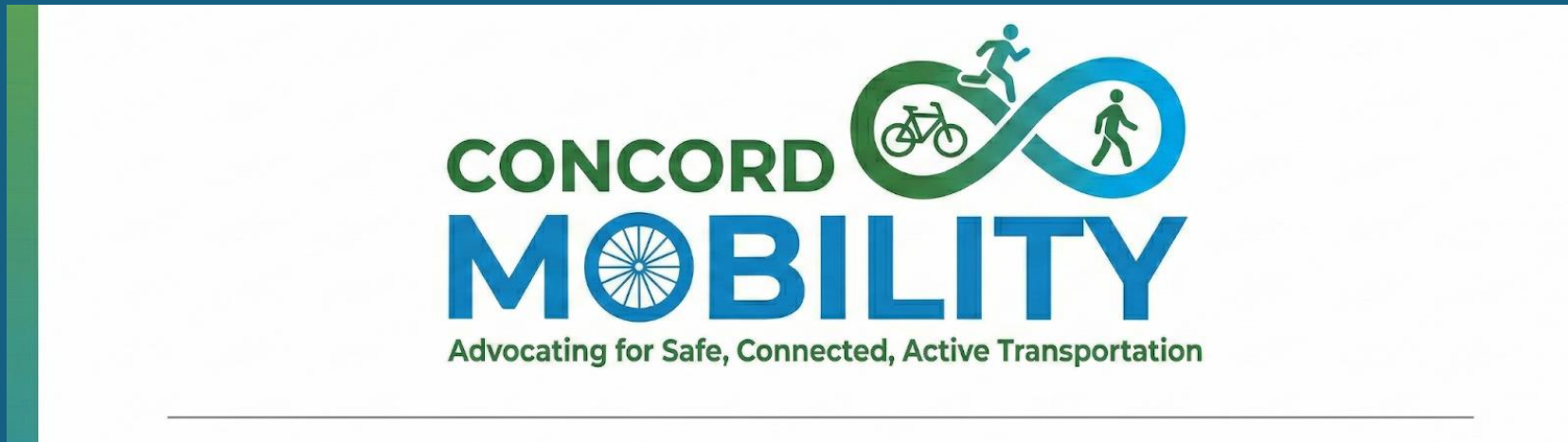


Suggested road segments that could benefit from inexpensive safety enhancements during 2026-2027 repaving operations

Submitted by



10 March 2026

Intention of this submission

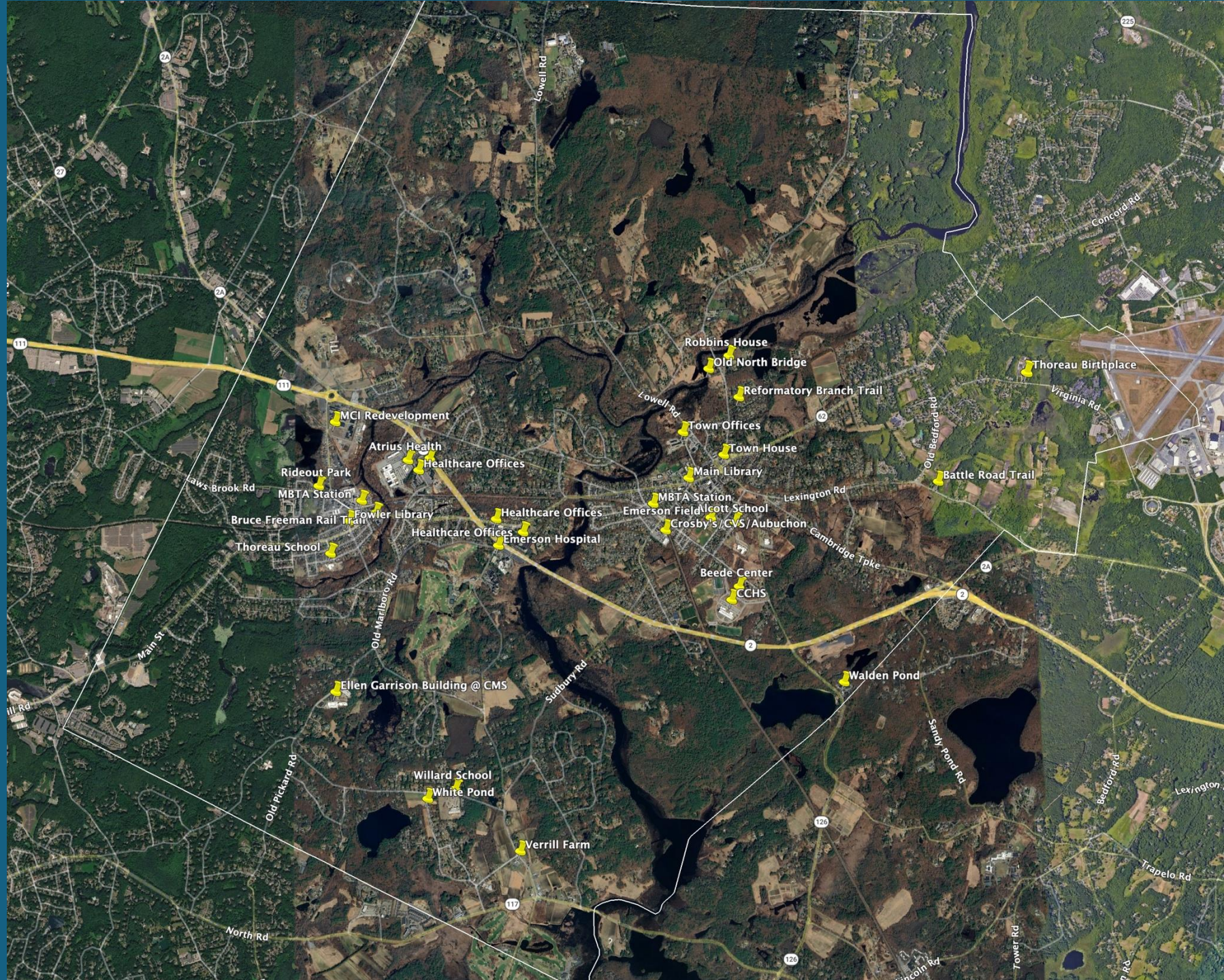
- Respond to CPW's expressed need to ID low-cost safety enhancements
- Promote coherent submission of community requests
- Inform, NOT replace, Stantec assessment & prioritization efforts
- Call attention to *road segments* where low-cost solutions could make an important contribution to a town-wide mobility network
- Provide road user perspective, particularly cyclists
- Put ideas on the table before the opportunity has passed
- Promote community engagement with CPW, PWC, TAC to advance shared goals

Method

1. Identify & map community destinations discussed in Transportation & Mobility Strategy (schools, village centers, markets, medical offices, etc.)
2. Sketch a draft Community Bike Network (CBN) that uses existing roads and paths to connect these destinations to each other and to neighborhoods
3. Overlay this CBN with CPW planned 2026 & 2027 repaving segments
4. Identify road segments where safety of the CBN could be improved at low cost (painted shoulders, sharrows, etc.) during upcoming paving work

Community Destinations

- Schools
- Village centers
- Medical offices
- Town offices
- Grocery stores
- Libraries
- Parks
- Tourist destinations
- Train stations



DRAFT* Community Biking Network

- Connects residential areas to destinations
- Utilizes main roads & multiuse trails
- Supplemented by neighborhood roads



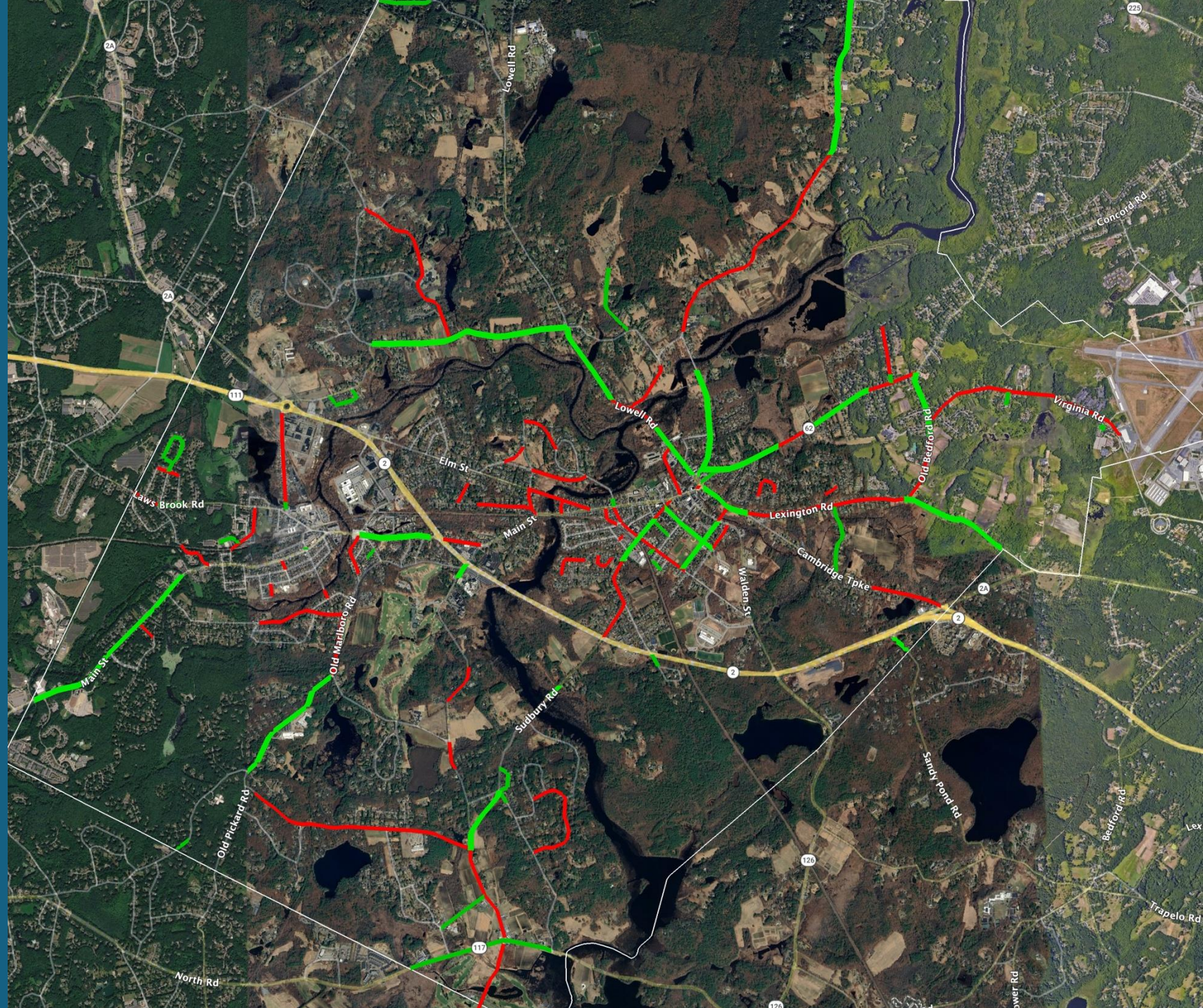
* Based on discussions among Concord MOBility members and Transportation & Mobility Strategy objective of providing a safe active transportation network connecting residential neighborhoods to community destinations. Presented here for discussion and refinement.

CPW 2026 & 2027 Pavement Improvement Segments

- Redrawn in Google Earth from CPW online viewer*
- Apologies for any differences from actual paving plan

2026 

2027 



*<https://concordma.maps.arcgis.com/apps/ins tant/nearby/index.html?appid=eb97521315ed45f6bc1d53da24aacfe3&sliderDistance=500>

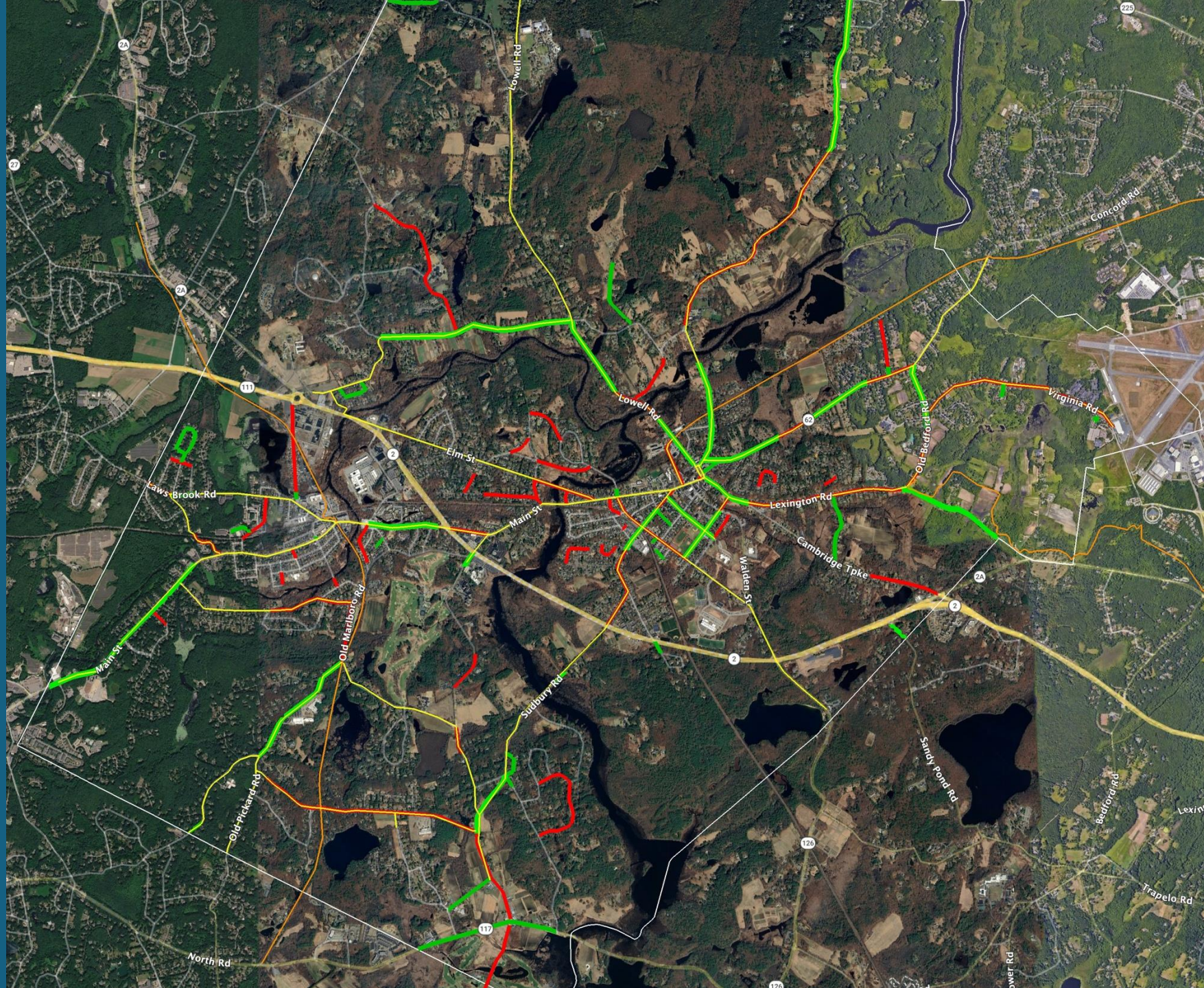
Community Bike Network & ALL 2026-2027 Paving Segments

- Identify segments of CBN scheduled for repaving

Community Bike Network



Repaving Plan



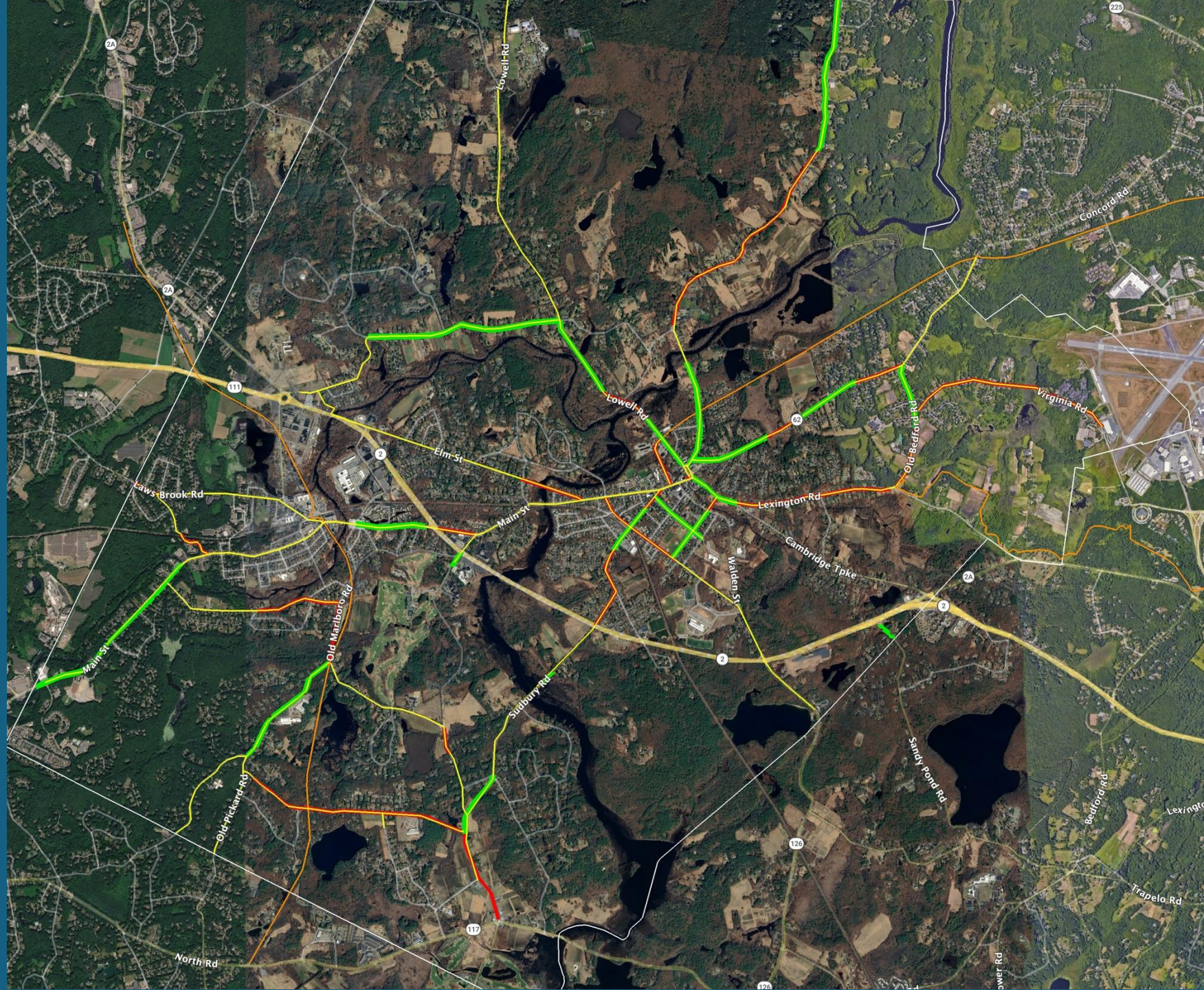
Community Bike Network & PRIORITY 2026-2027 Paving Segments

- Priority repaving segments for safety upgrades

Community Bike Network



Repaving Plan



Next Steps

1. Identify & correct any mapping errors
2. Incorporate any feedback on Community Destination and Community Bike Network (CBN)
3. Share the priority safety upgrade segments with Stantec
4. Discuss specific potential safety upgrades on these segments

Thank you for receiving and reviewing this input,
offered in a spirit of collaboration

