

Road Safety Ranking Process Update

Meeting w/TAC

February 17, 2026



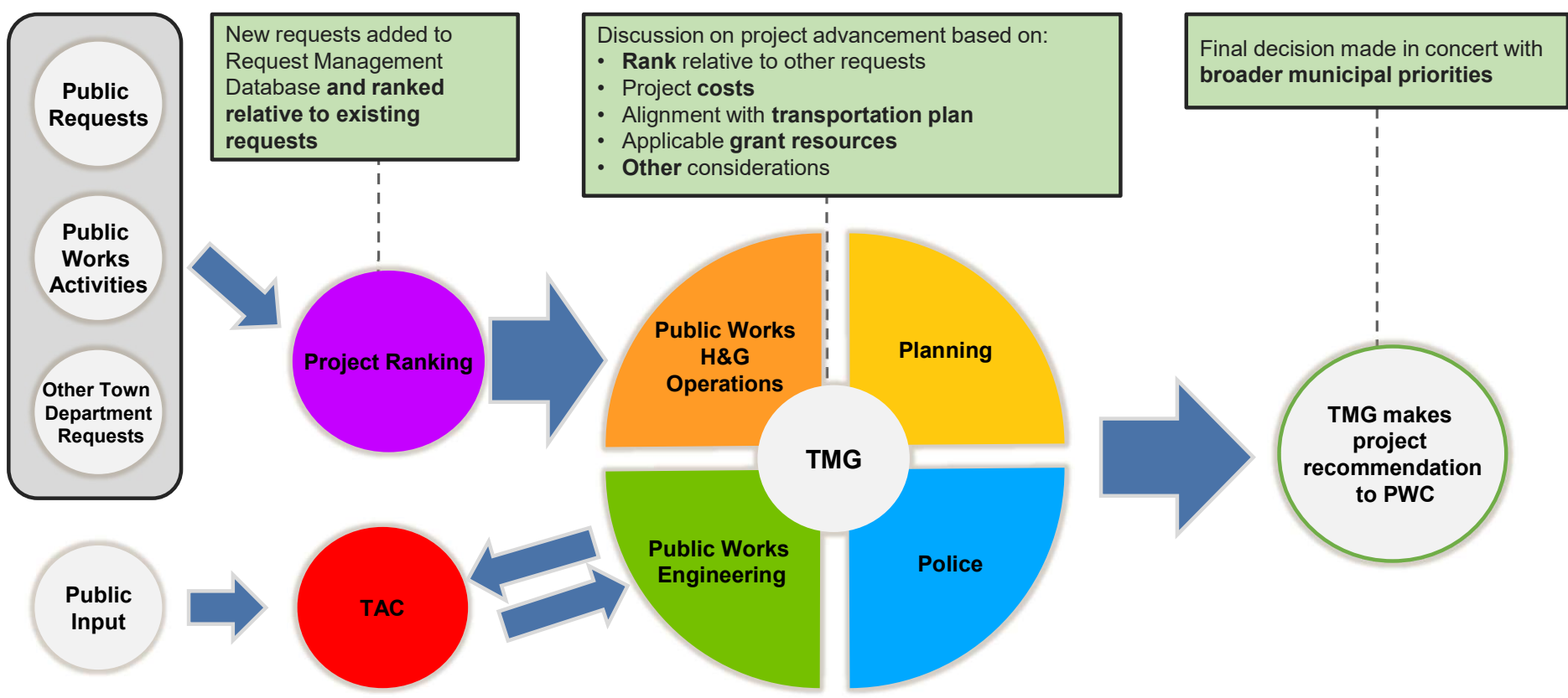
Agenda

1. Introduction & Background
2. Workflow Overview
3. Road Safety Projects Backlog
4. Review Ranking Criteria and Methodology
5. Next Steps/Questions



Request Management Workflow Communication

TOWN OF CONCORD, MA ASSET MANAGEMENT



Example Workflow

Project X

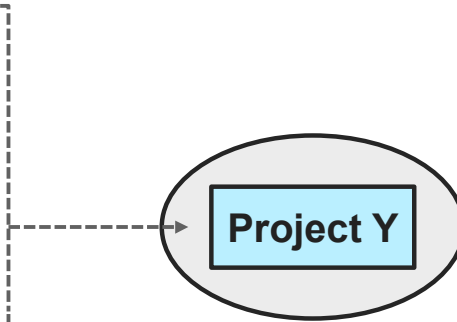
Request Management Database Rank	2
Cost	\$300k
Feasibility	Difficult (<i>requires removing parking on a central street</i>)
Grant funding	Limited

Project Y

Request Management Database Rank	6
Cost	\$150k
Feasibility	Straightforward
Grant funding	State grant available

Project Y

Project Y advanced despite a lower rank due to other considerations





Precedent

Stantec team has developed similar tools for:

- Boston, MA
- San Juan, PR
- Spencer, MA

Spencer presents a comparable use case:

- Town appropriated \$19 million towards a 5-year roadway and sidewalk improvement plan
- Used Asset Management Data to inform project implementation





Current Road Safety Activity Log

- **178** Activities Compiled
 - 134 Open
 - 20 Active
 - 24 Complete
- Current Open activities result in **106** prospective projects with a cost estimate of **\$27.3M**
- Town appropriated \$500k per year for 5 years – total of **\$2.5M** for safety improvements
 - Financial Constraint – makes prioritization essential



Open – Mid-block crossing on Heywood



Active – Baker Ave & Main St



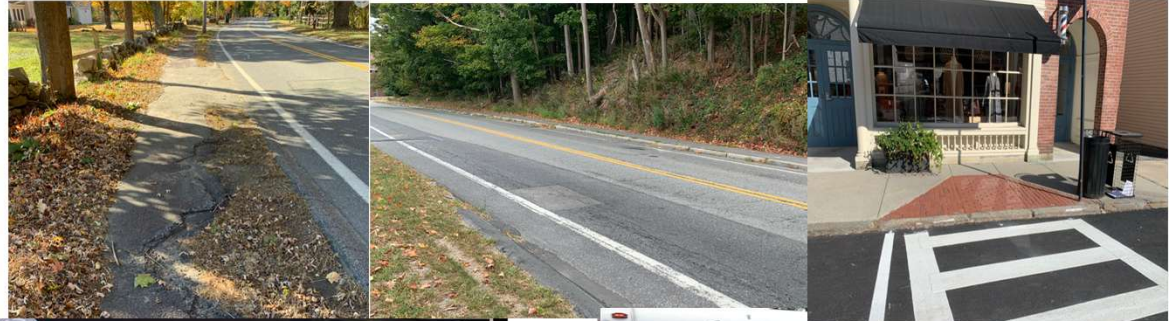
Complete – Commonwealth Ave



Ranking Criteria

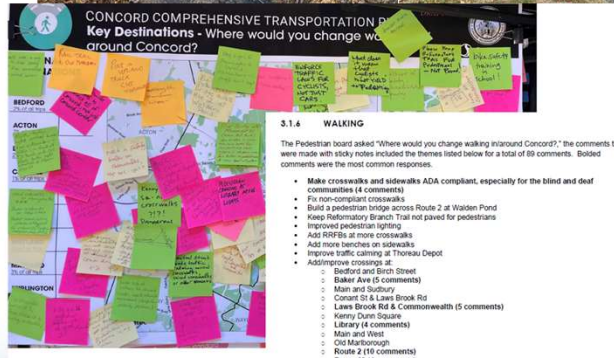
1. Infrastructure

Severity of non-compliance infrastructure and presence or absence of safety infrastructure



2. People

Focused on social vulnerable population and public input from the community (pedestrians, bicyclists, etc.)



3. Places

Proximity to important places, such as schools, train stations, business districts, and hospitals





Relation to Transportation Planning Efforts

Envision Concord Goals & resident feedback gathered at **October 2023 public workshop** directly influenced methodology of People and Places ranking criteria

Part of ongoing Concord Transportation Strategy



Summarized public workshop feedback
(highlighted locations reflected in ranking criteria)

- Add/improve crossings at:
 - Bedford and Birch Street
 - **Baker Ave (5 comments)**
 - Main and Sudbury
 - Conant St & Laws Brook Rd
 - **Laws Brook Rd & Commonwealth (5 comments)**
 - Kenny Dunn Square
 - **Library (4 comments)**
 - Main and West
 - Old Marlborough
 - **Route 2 (10 comments)**
 - **Route 62 (4 comments)**



Relation to Transportation Planning Efforts

Envision Concord Goals & resident feedback gathered at **October 2023 public workshop** directly influenced methodology of People and Places ranking criteria

Part of ongoing Concord Transportation Strategy

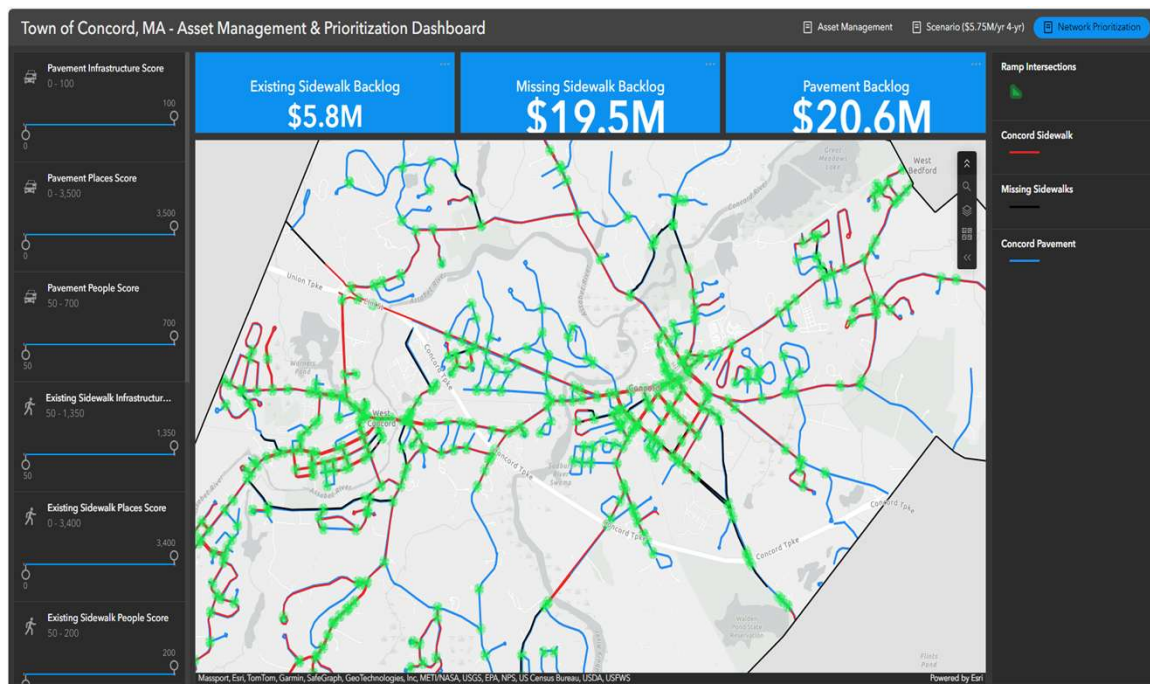
Example of Weighting Consideration Matrix

Feedback	Source	Weighting Suggestion	Adjustment #1	Adjustment #2
Better connections between Concord Center and West Concord	Overall public meeting takeaway	Add weight (50 pts) for Commonwealth Ave/Main Street and Old Marlborough Road/Upland Road/Pine Street and Main/Commonwealth Ave	Updated weight to higher magnitude of 100 - High Priority. Applied to pavements	
Create safe, cost-effective walking and bicycling connections between key pedestrian and bicycle paths/trails to improve mobility around concord	Envision Concord Goal	Weight bike trail crossings equal to train crossings.	This has been applied and updated	
Location: Crossing Route 2	Overall public meeting takeaway	Weight existing route 2 crossings under 'Crossings' section	All crossings ranked separately. Rte 2 accounted for under Places Score	
Location: Baker Avenue	Transportation Prioritization	Add a 25 pt weight	Updated weight to higher magnitude of 50 - Low Priority. Applied to pavements	Apply to ALL intersections within 400' of Main and Baker Av. Cottage, etc.



Data Analysis and Score Determination

1. Normalized scores for ranking criteria and established weighted ratio of all three scores based on active & completed projects thus far
 - » **75% Infrastructure**
 - » **25% People**
 - » **50% Places**
2. Applied composite score to all Open Projects
3. Produced list of top ranked project candidates as a strong starting point for TAC and TMG.



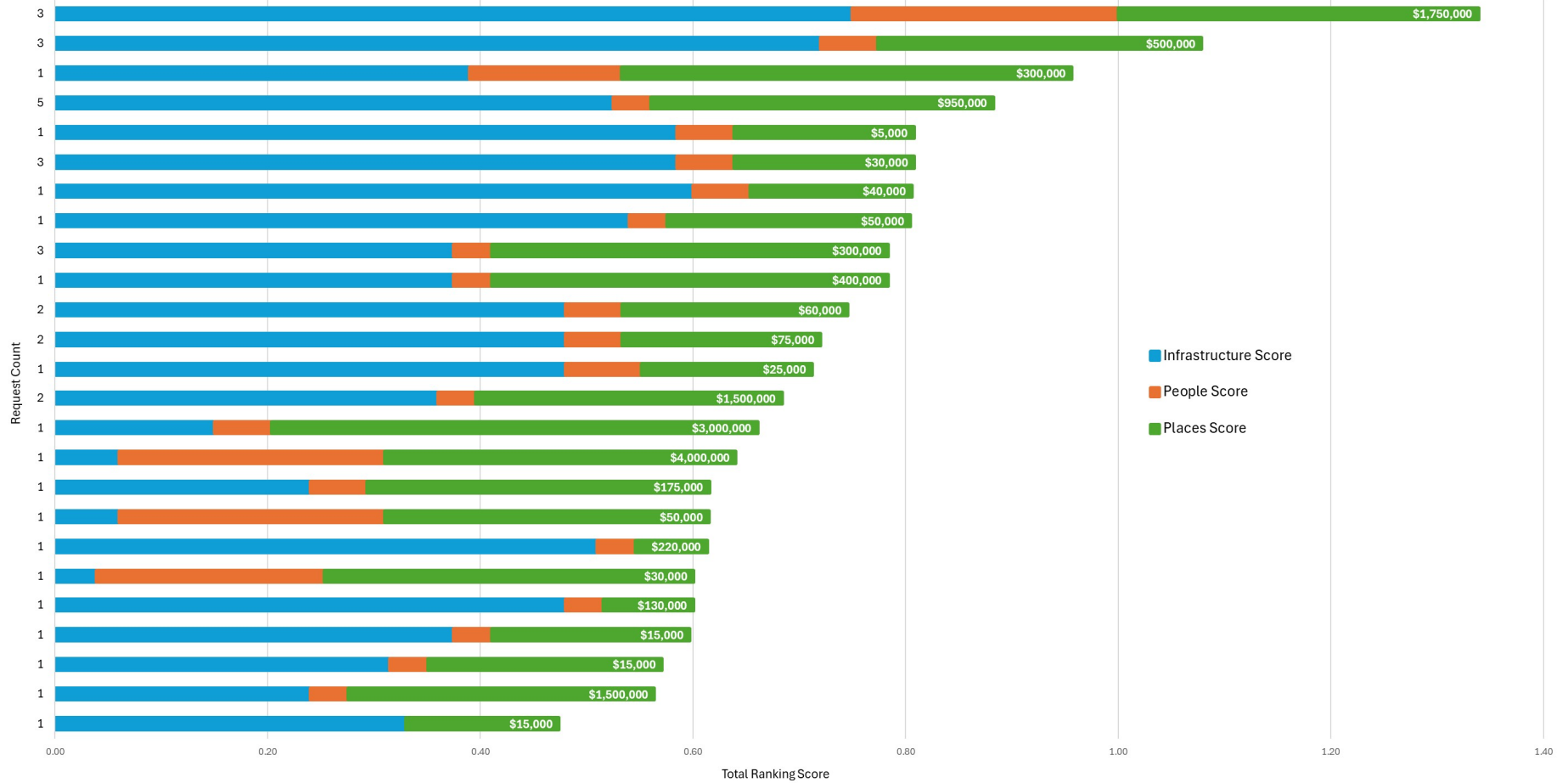


Ranking Framework

Criteria	Sub-Criteria	Sub-Weight	Overall Weight	Description	Data Source	
Infrastructure	Pavement		0-4	Pavement Condition Index (PCI) scores.	StreetScan 2024, Stantec 5% Re-Survey 2024	
		ADA Measurements	0-4			
	Sidewalk		Damaged Area (SCI)	0-8	Sidewalk Condition Index (SCI) scores, material, and frequency of pinch points.	StreetScan 2018, Stantec 50% Re-Survey 2024
			Material	2-10		
			Hazard/Obstruction	1-4		
	Intersection		Missing ADA Infrastructure	0-14	Intersection configuration, severity of non-compliant measurements on critical components of curb ramps, and position of crosswalks.	StreetScan 2018, Stantec 50% Re-Survey 2024
			Intersection Configuration	0-8		
		ADA Measurements	0-8			
People	Public Meeting Input		1-2	Public input from the Comprehensive Transportation Plan - Public Workshop held on October 17, 2023.	Concord Comprehensive Transportation Plan	
	Disability Population		1-3	Disabled population based on 2020 Census Tract data.	ACS Disability by Type Boundaries (GIS)	
Places	Public/Private Schools		2-8	0.25-0.75 mile buffer	MassGIS	
	Train Stations		2-8	0.25-0.75 mile buffer	MassGIS	
	Crash Clusters	Bike		20	Car and bike crashes. 250' buffer	MassGIS
		Car		10		
	Crossings	Trail		1-5	250' buffer	MassGIS
		Bike Trail		8		
		Railroad		8		
		River		2		
	Historical & Business Zones		4	Existing polygon	Town of Concord GIS	
	Route 2 Corridor		10	150' buffer	MassGIS	
	Historical Parks & Recreation Areas		4	1,500' buffer	MassGIS	
	Parks		2	0.25 mile buffer	MassGIS	
	Library		2-8	0.25-0.75 mile buffer	MassGIS	
	Hospital		6	1,500' buffer	MassGIS	
Community Center		2-8	0.25-0.75 mile buffer	MassGIS		
High Residential		4	50' buffer	Town of Concord GIS		

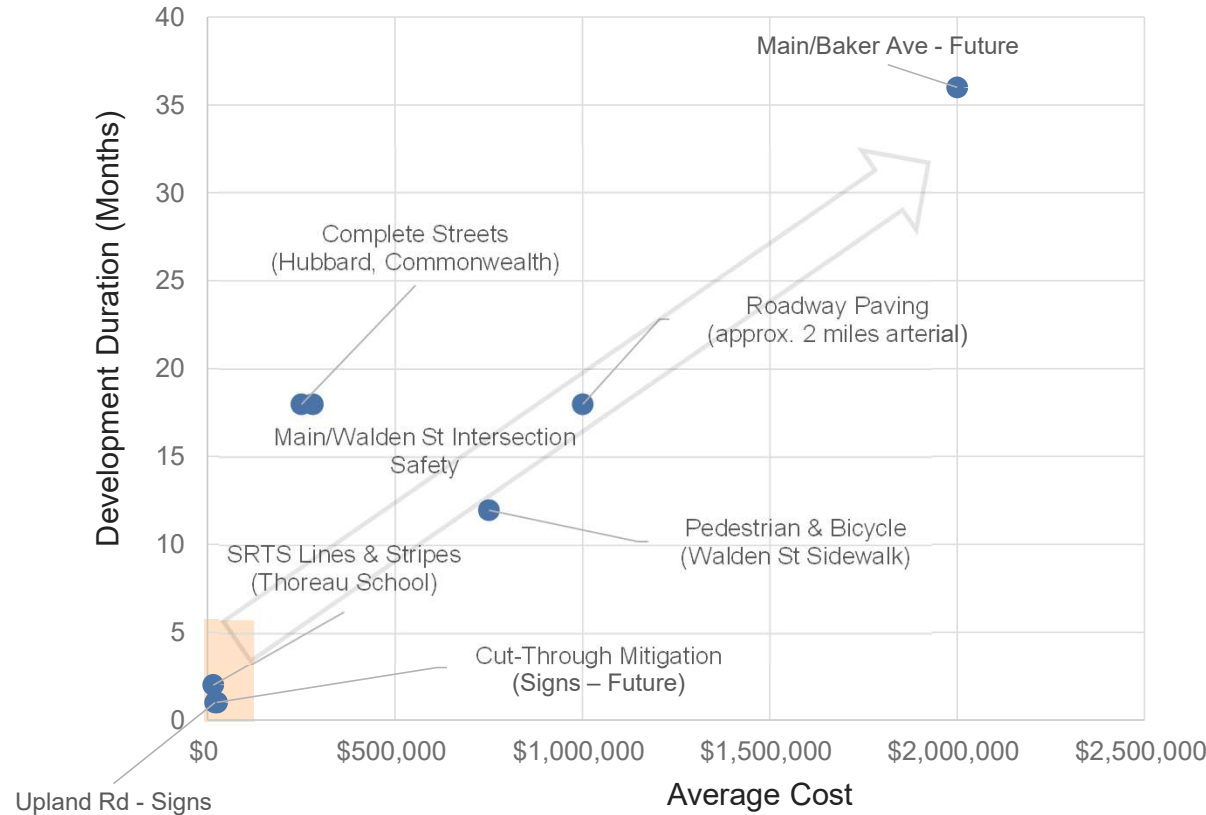
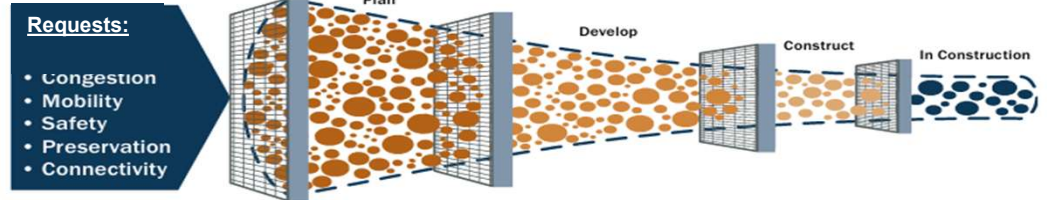


Top 25 Projects



TAC & TMG Road Safety Project Discussions

Project Type	Planning and Development Duration	Typical Costs
<u>Operating Budget</u> <i>(signs, repairs)</i>	<6 months	Low <\$25k
<u>Cut-Through Mitigation</u> <i>(Traffic Control Signs – Recommended in 2018 Study)</i>	<6 months	Low <\$25k
<u>SRTS Lines & Stripes</u> <i>(Thoreau School Walk Audit)</i>	<6 months	Low <\$25k
<u>Grant & Local Funding</u> <i>(Safe Streets & Spaces – OMR)</i>	6 – 24 months	Medium \$25k - \$250k
<u>Intersection Improvements</u> <i>(Main St/Walden St)</i>	6 – 24 months	Medium \$25k - \$250k
<u>Roadway Paving</u> <i>(Collector and Arterial Streets)</i>	6 – 24 months	High >\$250k
<u>Pedestrian & Bicycle</u> <i>(Walden St Sidewalk – under design)</i>	6 – 24 months	High >\$250k
<u>Complete Streets</u> <i>(Hubbard St, Commonwealth Ave)</i>	6 – 24 months	High >\$250k
<u>Large Road Improvement</u> <i>(Main St/Baker Ave Intersection)</i>	>24 months	High >\$250k





Next Steps and Questions

- TAC and TMG to review project rankings to identify medium to high-cost projects associated with capital projects.
- TAC and TMG will also identify short-term low costs road safety improvement projects.
 - Signage and marking improvements – to reduce bike stress levels
 - Curb ramp and crosswalk improvements
 - Piloting some new traffic calming solutions – Splitter islands, speed tables and raised cross-walks
- Establish 2026 and 2027 work plan, both PMP and road safety projects, to broadcast and clearly communicate this plan to the public.

