



# Bicycle Parking

Laura Davis | August 1, 2024

Why should we care? **There are more and more bikes!**



**West Concord**

Photo Taken May 25, 2024

# Why should we care? **Bikes mean business!**



**Kickstand Cafe, Arlington**  
Photo Taken May 2023



**Revolution Hall, Lexington**  
Photo Taken May 2023

Why should we care? **More people, fewer cars.**



Source: [Halt Inc. Car Bike Port](#)

# Why should we care? **No bike parking = bike clutter**



**Haute Coffee, Concord Center**  
Photo Taken February 2023



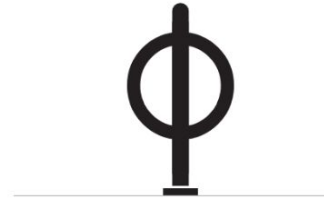
**Caffé Nero, Concord Center**  
Photo Taken January 2023

# The Bike Parking: A Recipe for Success

- Good Location
  - Close to desirable destinations
  - Easy to spot
- Secure
  - Well-anchored
  - Well-lit
  - In view of the public — anti-theft
- Rack designs that are **Versatile** & **Accessible!**
  - Used by recumbents, trikes, and cargo bikes
  - Used by bikes with panniers, trailers, or tagalongs
  - Used by children's bikes & scooters (especially at schools, playgrounds, & libraries)
- Installed on a flat, firm surface (ideally a sturdy concrete pad or asphalt)
- Weather Protected
- Abundant

# The Best Rack Styles

## POST & RING



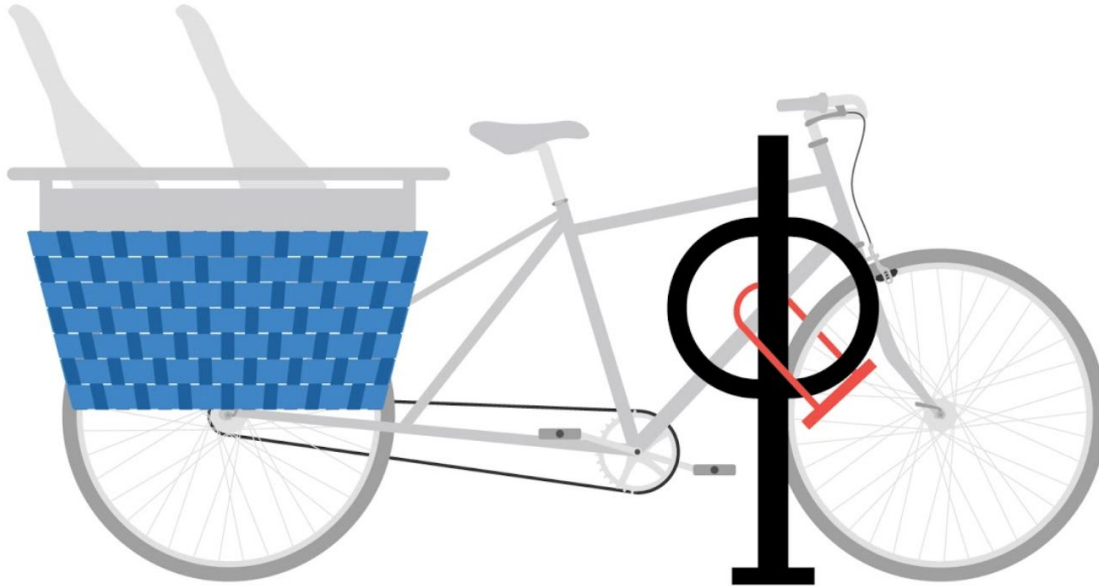
## INVERTED U

also called  
staple, loop



**Source:** [Essentials of Bike Parking](#), Association of Pedestrian and Bicycle Professionals, September 2015

# RACK STYLES: **City of Boston**



“The City of Boston’s standard rack is a black, powder-coated post-and-ring rack. These racks meet all of the City’s performance criteria.”

Source: [Bike Rack Program](#), City of Boston, Accessed May 2024

# Excellent Examples in Concord



**Bruce Freeman RT, West Concord**  
Photo Taken September 2023



**Fowler Library, West Concord**  
Photo Taken February 2024

# Excellent Examples in Concord



**Concord Market**  
Photo Taken January 2023



**Umbrella Arts Center**  
Photo Taken January 2023

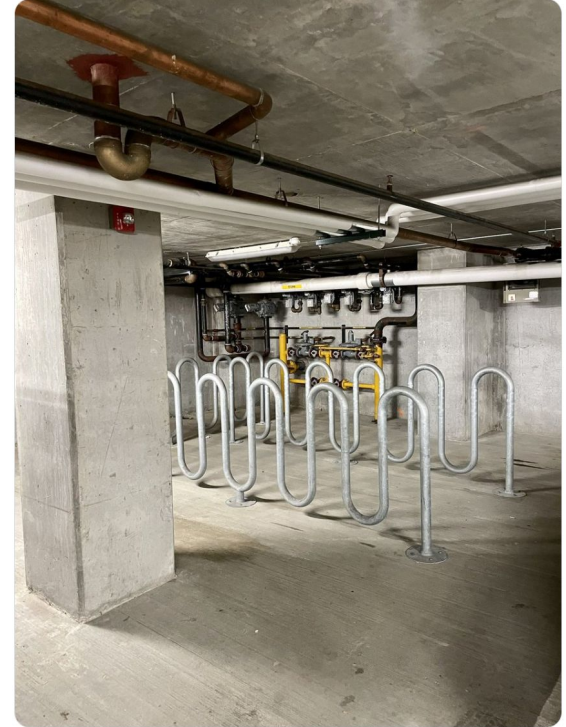
# Why bike parking often fails...

- Rack Design
- Rack Spacing
- Visibility
- Proximity
- Security
- Accessibility
- Weather exposure
- Lighting
- Proximity to the trash (smells & broken glass)

File this under bike racks that are useless. [#bikefail](#) I guess they tried?  
👤👤



Spotted this [#uselessbikerack](#) in a West Loop parking garage this weekend. Not only are the racks too close together, I really don't know how you'd get a bike in this garage to begin with unless you duck under the gates or carry it down some stairs.



# RACKS TO AVOID

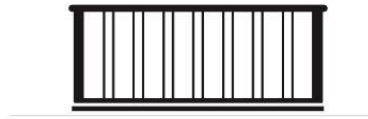
## WAVE

also called undulating  
or serpentine



## SCHOOLYARD

also called  
comb, grid



## COATHANGER

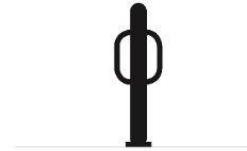


Source: [Essentials of Bike Parking](#), Association of  
Pedestrian and Bicycle Professionals, September 2015

## WHEELWELL



## BOLLARD



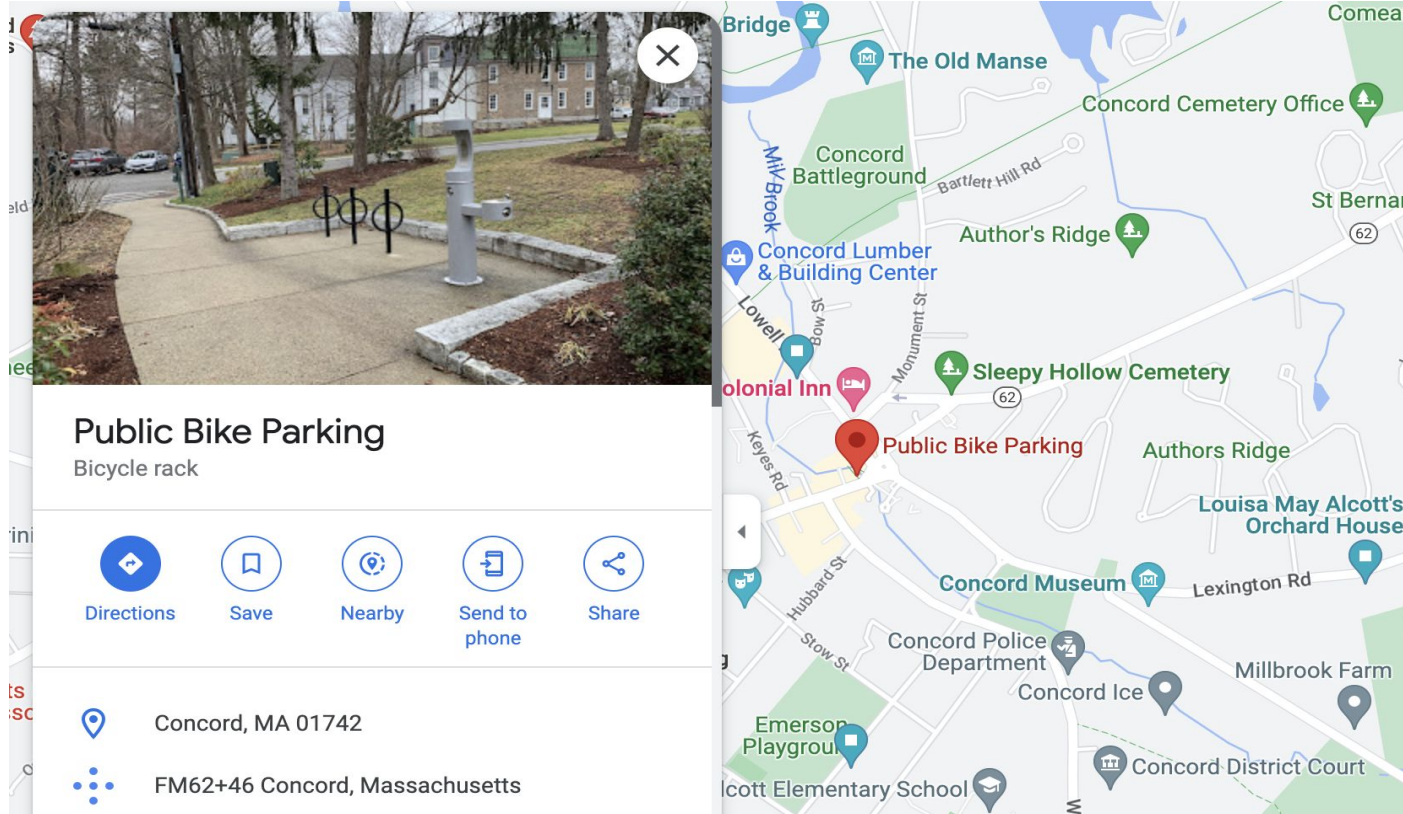
## SPIRAL



## SWING ARM SECURED



# Case Study 1: Monument Square, a municipal rack



# Case Study 1: Monument Square, a municipal rack



**Town House**

Photo Taken January 2023

## Pros:

- Close to destinations
- **Great** design!
- Level, smooth surface
- Well anchored
- Water fountain! (a really nice bonus)

## Cons:

- Not visible from the street
- Not weather protected
- No lighting

Can you spot this rack? **No!**



**Concord Center**  
Photo Taken January 2023



**Concord Center**  
Photo Taken January 2023

## Case Study 2: Town House



**Town House**

Photo Taken January 2023

### Pros:

- Close to destinations
- Good lighting

### Cons:

- Poor rack design
- High curb
- Not anchored to the ground
- Uneven surface
- Not visible from the main entrance
- Not very visible to passers-by
- Not weather protected

## Case Study 2: A less than ideal design



**Town Hall**

Photo Taken September 2023



**Keyes Road**

Photo Taken May 2024

## Case Study 3: Why is no one using this bike rack?

- Rack Design
- Rack Spacing

### SCHOOLYARD

also called  
comb, grid



Concord Center

Can you spot the bike rack? **No!**



Concord Center



Concord Center

# Bike Racks for Parking Variance

Great idea! But we need to make sure we specify what kind of bike parking will effectively offset a need for parking.



The Board discussed the Applicant's offer regarding an exterior bike rack in the Walden Street municipal parking lot. The Board decided to add a condition that "prior to the issuance of a Certificate of Occupancy, the Applicant shall coordinate with the Town Engineer and Town Planner the donation of a minimum four space bicycle rack for the Walden Street municipal lot."

**Source:** [Minutes of the Planning Board Meeting of May 8, 2018](#)

# From the 2013 a Review of Parking Standards

*Opportunity: Include short and long term bicycle parking standards in the zoning bylaw, including bicycle rack standards and provision of on-street or publicly available bicycle parking.*

**Source:** [Nelson/Nygaard Review of Parking Standards in Concord Zoning Code](#), March 2013

# Finding from the 2019 Concord Parking Code Analysis

Prepared by: Metropolitan Area Planning Council

## **Consider implementing bicycle parking requirements for large scale developments.**

As bicycle infrastructure improves throughout the region and the share of people bicycling to work increases, the Town can take additional measures to help further encourage cycling. One relatively easy and low-cost way to do so is to require bicycle parking be provided on site at new developments. Requirements generally range from one bicycle parking spaces for every 10-20 vehicle parking spaces, or could be structured based on the number of residential units (i.e.: one bicycle parking space per 2-3 residential units). The Town of Acton requires one bicycle space per 20 vehicle spaces, although there is a minimum of two bicycle spaces per site.<sup>22</sup> Furthermore, if the developer constructs up to six bicycle parking spaces, parking requirements are reduced by one space. Requiring bicycle parking on site can encourage more cycling in the town and enhance use of regional trails, including the Bruce Freeman Rail Trail just north of West Concord.

Source: [Concord Parking Policy Analysis](#), July 2019

# What Our Neighbors Are Doing



**Acton Train Station**

Photo Taken September 2022



**Lexington Visitors Center**

Photo Taken September 2022

# What Our Neighbors Are Doing

## Arlington Installs New Bicycle Racks Around Town

Five new locations support Arlington's Sustainable Transportation Plan.

Post Date: 11/28/2022 11:27 AM



Ottoson Middle School



Hill's Hill



Arlington High School

# Potential Improvements

## SHORT TERM

Create ***voluntary*** bicycle parking design guidelines for both municipal and private bicycle parking facilities.

## LONG TERM

“Include short and long term bicycle parking standards in the zoning bylaw, including bicycle rack standards and provision of on-street or publicly available bicycle parking.”

(Nelson/Nygaard 2013)

“Require bicycle parking be provided on site at new developments”

(Concord Parking Policy Analysis 2019)

# Less Than Ideal Conditions at Concord Depot



**Concord Depot**  
Photo Taken March 2023



**Concord Train Station**  
Photo Taken March 2023

# Why aren't they using the bike rack?



**NOT SECURE! Evidence of theft.**  
**Concord Train Station**  
Photo Taken March 2023



**SECURE! U-lock to frame**  
**Concord Depot**  
Photo Taken March 2023