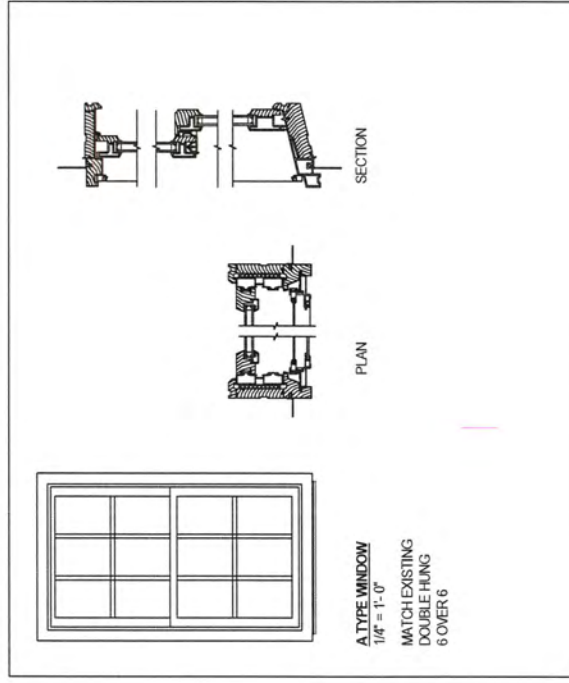


**BACK ELEVATION - SOUTH**

Window Schedule (by Type)				
Type Mark	Rough Opening		Quantity Count	Manufacturer
	Width	Height		
A	2' - 8 1/8"	4' - 8 7/8"	8	Anderson 400 Series Woodright

- VERIFY FRAME SIZE IN FIELD
- EXISTING WOOD CASINGS & SILLS TO REMAIN, REPAIR AS REQUIRED
- CLAD EXTERIOR W/ WOOD INTERIOR



ARCHITECT  
Colin Smith Architecture, Inc.  
1666 Massachusetts Ave.  
Lexington, MA 02420 781.274.0655

CLIENT  
Spaulding Management

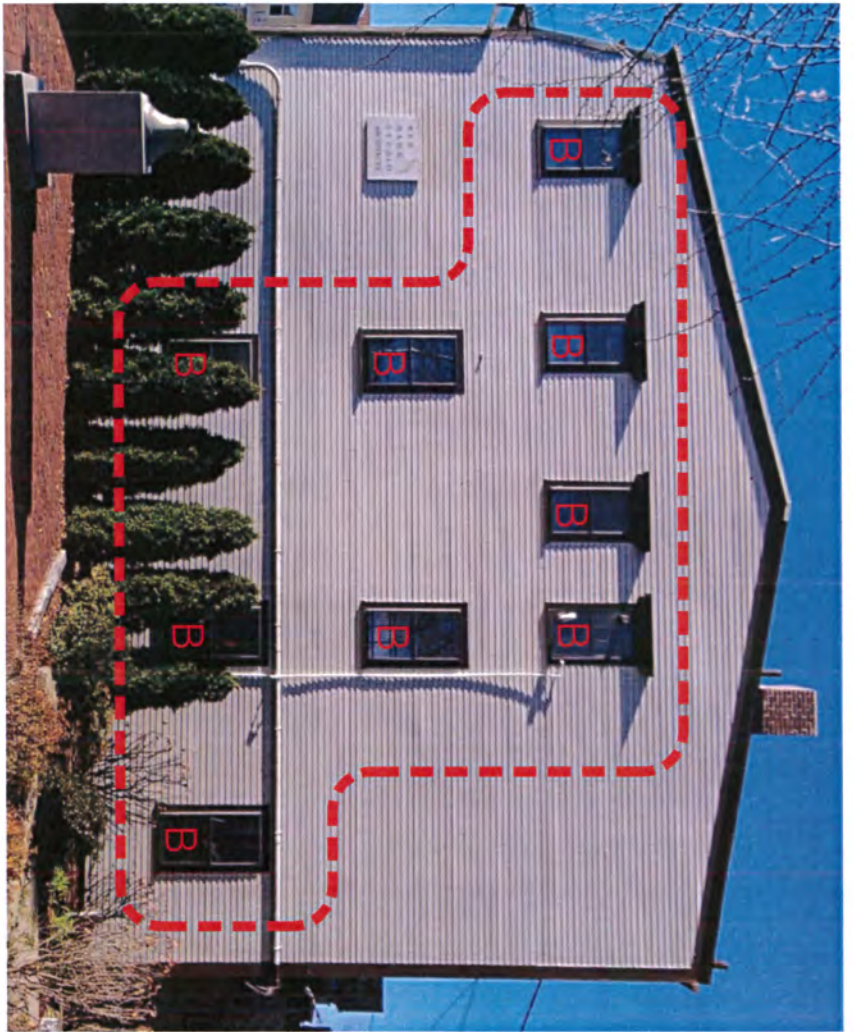
PROJECT NAME  
**Window Replacement**  
2 Independence Court, Concord MA

SHEET NAME  
**Window Scope & Schedule**  
1/2" = 1'-0"

ISSUE DATE:  
DRAWN BY:

4/19/23  
RA

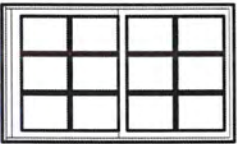
SHEET NUMBER  
**A1.0**



3

Mill Brook

no scale



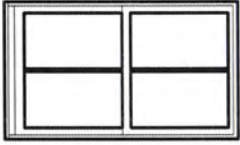
Match Existing  
 Double Hung  
 6 Over 6  
 see p.6 for details

B Style Window - 9 Units

1/4" = 1'-0"



3	UNION BLOCK 18-26 Main Street	Scale as Noted Date: 12/13/2021	MAYNARD DESIGN + ARCHITECTURE 160 Lincoln Road   P.O. Box 457, Lincoln, MA 01773 617.359.6141   Nick@MaynardDesign.com www.MaynardDesign.com
---	----------------------------------	------------------------------------	-------------------------------------------------------------------------------------------------------------------------------------------------------



Match Existing  
 Double Hung  
 2 Over 2  
 see p.5 for details

**A Style Window - 22 Units**

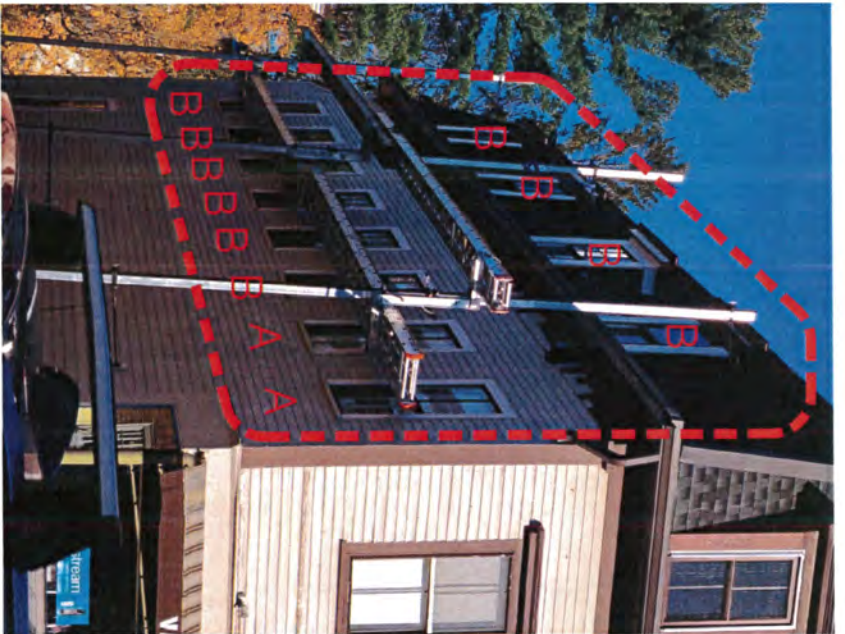
1/4" = 1'-0"

1

Main Street  
 no scale

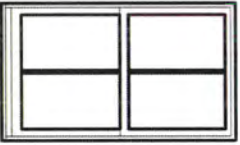


1	UNION BLOCK 18-26 Main Street	Scale as Noted Date: 12/13/2021	MAYNARD DESIGN + ARCHITECTURE 160 Lincoln Road   P.O. Box 457, Lincoln, MA 01773 617.359.6141   Nick@MaynardDesign.com www.MaynardDesign.com
---	----------------------------------	------------------------------------	-------------------------------------------------------------------------------------------------------------------------------------------------------



2

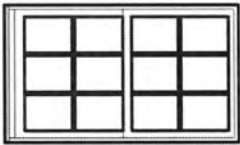
Vanderhoofs Alley  
no scale



Match Existing  
Double Hung  
2 Over 2  
see p.5 for details

A Style Window - 2 Units

1/4" = 1'-0"



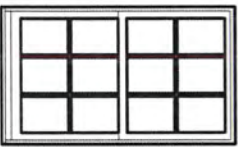
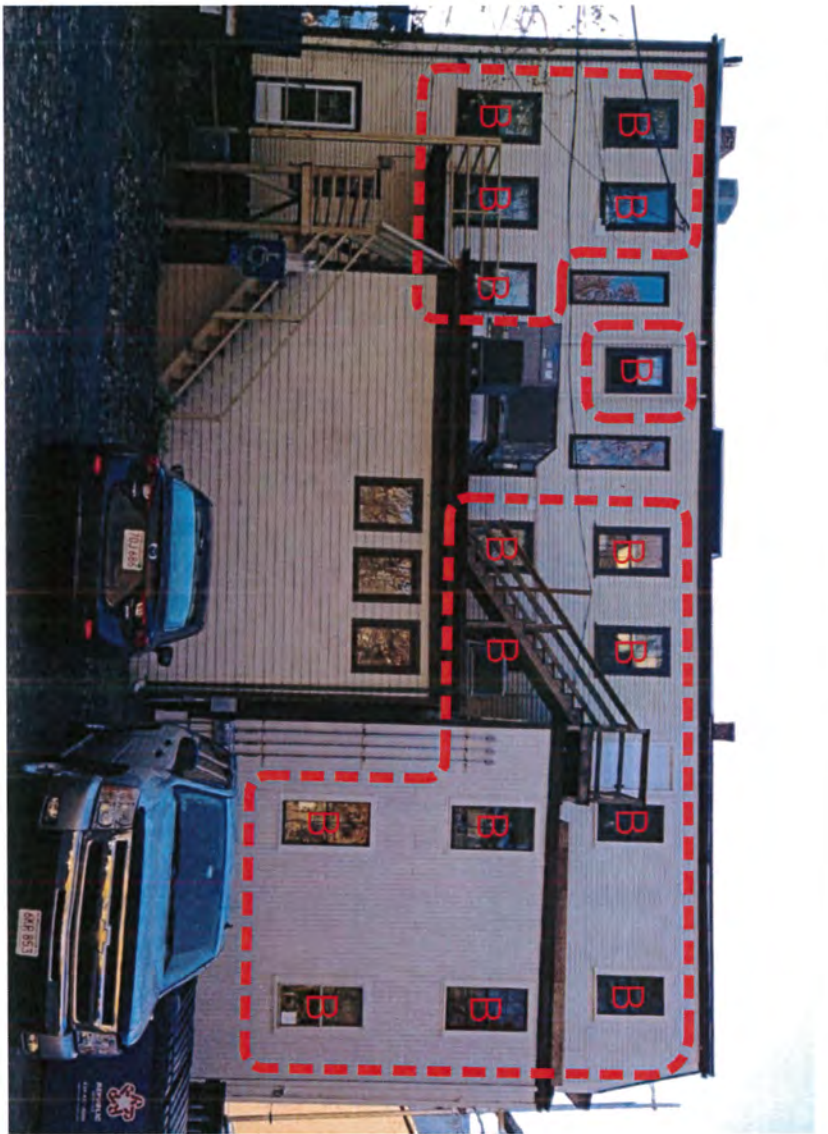
Match Existing  
Double Hung  
6 Over 6  
see p.6 for details

B Style Window - 10 Units

1/4" = 1'-0"



2	UNION BLOCK 18-26 Main Street	Scale as Noted Date: 12/13/2021		MAYNARD DESIGN + ARCHITECTURE 160 Lincoln Road   P.O. Box 457, Lincoln, MA 01773 617.359.6141   Nick@MaynardDesign.com www.MaynardDesign.com
---	----------------------------------	------------------------------------	--	-------------------------------------------------------------------------------------------------------------------------------------------------------



Match Existing  
 Double Hung  
 6 Over 6  
 see p.6 for details

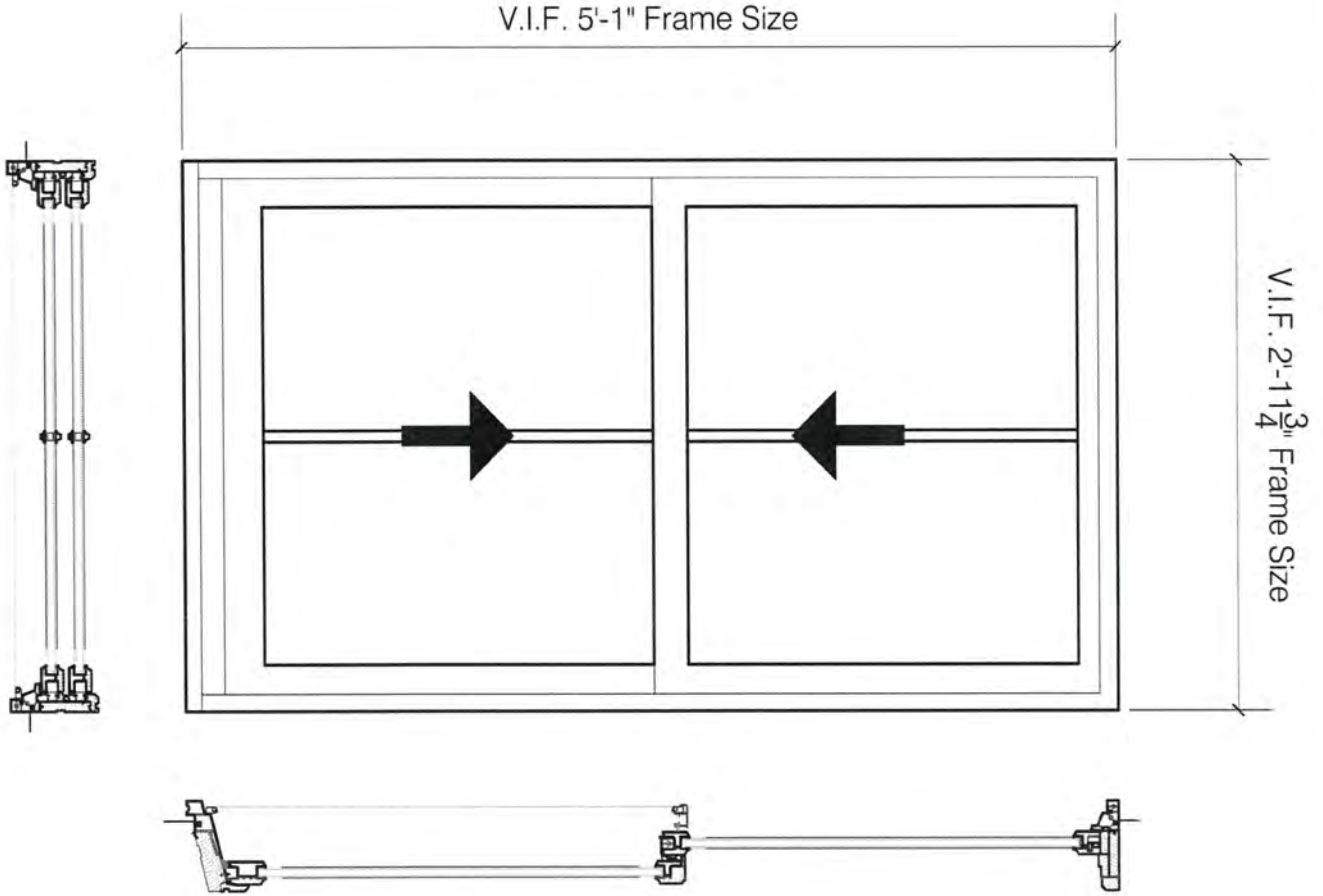
**B Style Window - 16 Units**

1/4" = 1'-0"

4 Rear  
 no scale



4	UNION BLOCK 18-26 Main Street	Scale as Noted Date: 12/13/2021	MAYNARD DESIGN + ARCHITECTURE 160 Lincoln Road   P.O. Box 457, Lincoln, MA 01773 617.359.6141   Nick@MaynardDesign.com www.MaynardDesign.com
---	----------------------------------	------------------------------------	-------------------------------------------------------------------------------------------------------------------------------------------------------

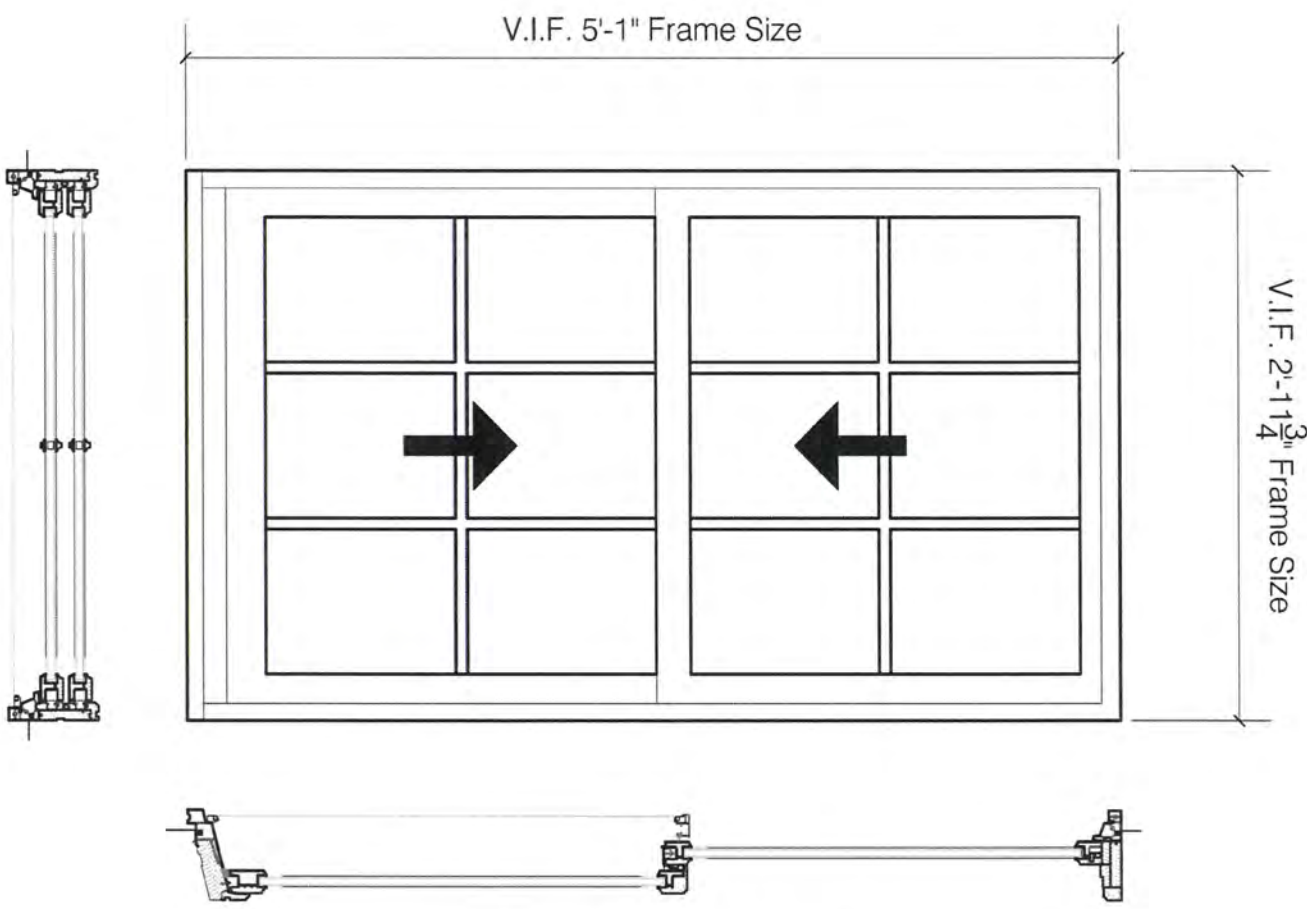


REPLACEMENT WINDOWS  
 Andersen 400 Series  
 Woodwright Double Hung Window  
 Black Exterior/White Interior  
 Glazing to Match Existing  
 2 Over 2  
 3/4" Mullion w/ Spacer Bar (FDL)  
 Dual Pane, Low E4, Standard Argon Filled,  
 Full Divided Light, U-0.29



1 Replacement Window A  
 1" = 1'-0"

5	UNION BLOCK 18-26 Main Street	Scale as Noted Date: 12/13/2021	MAYNARD DESIGN + ARCHITECTURE 160 Lincoln Road   P.O. Box 457, Lincoln, MA 01773 617.359.6141   Nick@MaynardDesign.com www.MaynardDesign.com
---	----------------------------------	------------------------------------	-------------------------------------------------------------------------------------------------------------------------------------------------------



REPLACEMENT WINDOWS  
 Andersen 400 Series  
 Woodwright Double Hung Window  
 Black Exterior/White Interior  
 Glazing to Match Existing  
 6 Over 6  
 3/4" Mullion w/ Spacer Bar (FDL)  
 Dual Pane, Low E4, Standard Argon Filled,  
 Full Divided Light, U-0.29



1 Replacement Window B  
 1" = 1'-0"

6	UNION BLOCK 18-26 Main Street	Scale as Noted Date: 12/13/2021		MAYNARD DESIGN + ARCHITECTURE 160 Lincoln Road   P.O. Box 457, Lincoln, MA 01773 617.359.6141   Nick@MaynardDesign.com www.MaynardDesign.com
---	----------------------------------	------------------------------------	--	-------------------------------------------------------------------------------------------------------------------------------------------------------