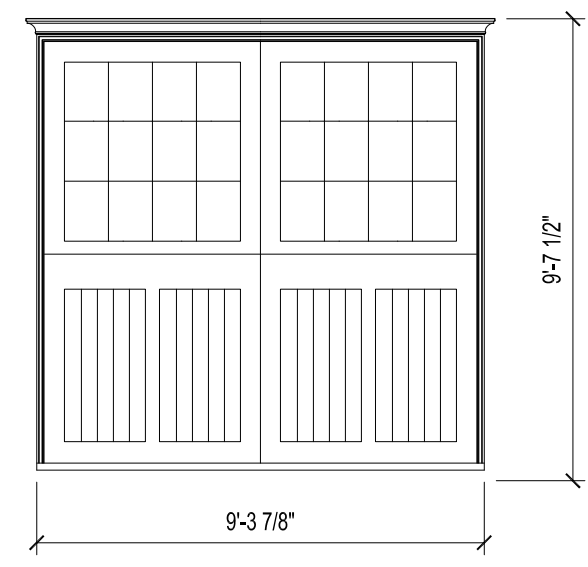
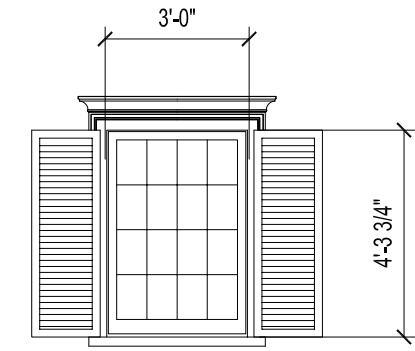


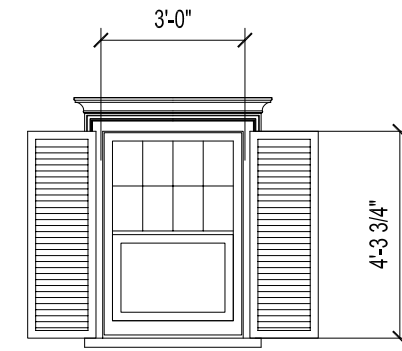
A Carriage House overhead garage doors Scale: 1/4" = 1'-0"



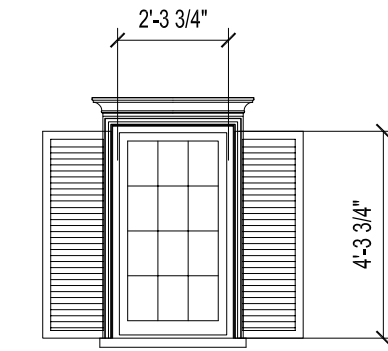
B Carriage House barn doors Scale: 1/4" = 1'-0"



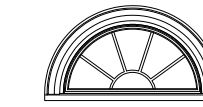
C Marvin WUCA 4/3 Scale: 1/4" = 1'-0"



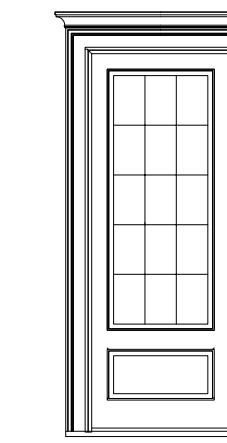
D Marvin WUCA 4/2 Scale: 1/4" = 1'-0"



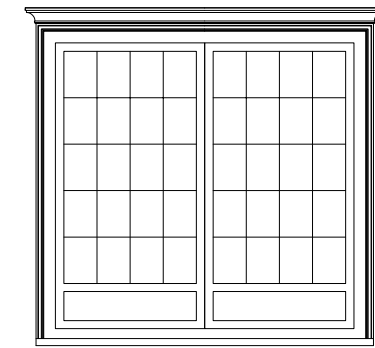
E Marvin WUCA 3/4 Scale: 1/4" = 1'-0"



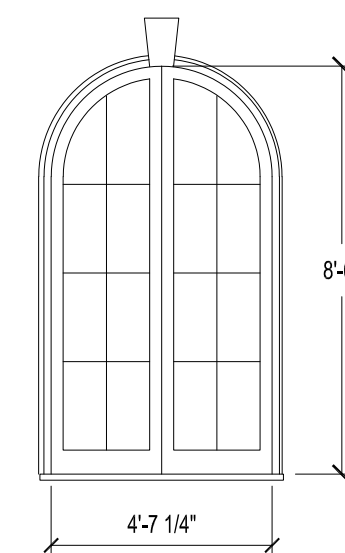
F Marvin arch window Scale: 1/4" = 1'-0"



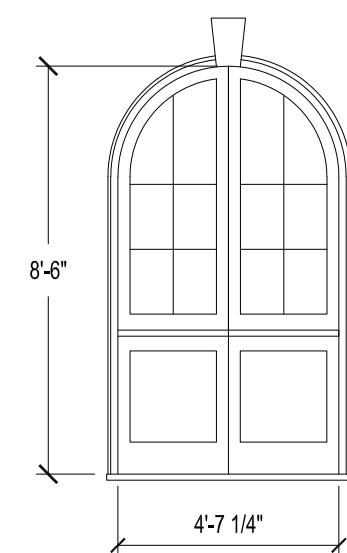
G Marvin wood entry door 1 3/4" Scale: 1/4" = 1'-0"



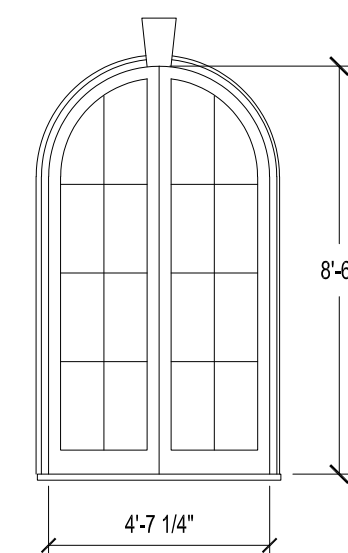
H Marvin french doors Scale: 1/4" = 1'-0"



A ARCH WINDOW Scale: 1/4" = 1'-0"



B ARCH WINDOW Scale: 1/4" = 1'-0"



C ARCH DOOR Scale: 1/4" = 1'-0"

GENERAL NOTES:

ALL CARRIAGE HOUSE WINDOWS TO BE WOOD ULTIMATE MARVIN WINDOWS & DOORS W/ 5/8" PUTTY MUNTIN PROFILE, SIMULATED DIVIDED LIGHTS, SPACER BAR, LOW E, HISTORIC SILLS, TRIM AND CASING TO MATCH EXISTING HOUSE

FRENCH DOOR HARDWARE:
BALDWIN BISMARCK 5103 BRASS PVD
GC TO PROVIDE FINISH SAMPLE FOR FINAL REVIEW AND APPROVAL

TIMBERLANE 2-1/2" LOUVER NEW ENGLAND STYLE SHUTTERS W/ WHITE POWDER COAT PLATES AND PINTELS, TYP.