

Minute Man National Historical Park

Motorist Guidance - Park Boundary Signage

MIMA-2022-1392



Harpers Ferry Center
Harpers Ferry, WV 25425
February 10, 2023zzz z



4" Cap Height - Clearview 2W - 70" x 38"

Location: Lexington Rd, Concord at intersection with Old Bedford Rd south and east of house #663 within American Mile Historic District




4" Cap Height Clearview 2W- 62" x 38"

Location: Old Bedford Rd, Concord near house #55



4" Cap Height - Clearview 2W - 70" x 38"

Location: Bypass Road, Lincoln

Minute Man National Historical Park	Description Notes TBD	Project Number	
		MIMA-2022-1392-ID	
Identity Sign Project	National Park Service Harpers Ferry Center Media Development Signs	Drawing Date	Page
		08/18/2022	1.0
Scale: 1/2" = 1" - 0"			



Location: Bedford Road, Lincoln

4" Cap Height Clearview 2W- 62" x 38"



Location: North Great Road, Lincoln, across from Hanscom Drive

6" Cap Height - Clearview 2W - 90" x 57"



Location: Mill Street, Lincoln

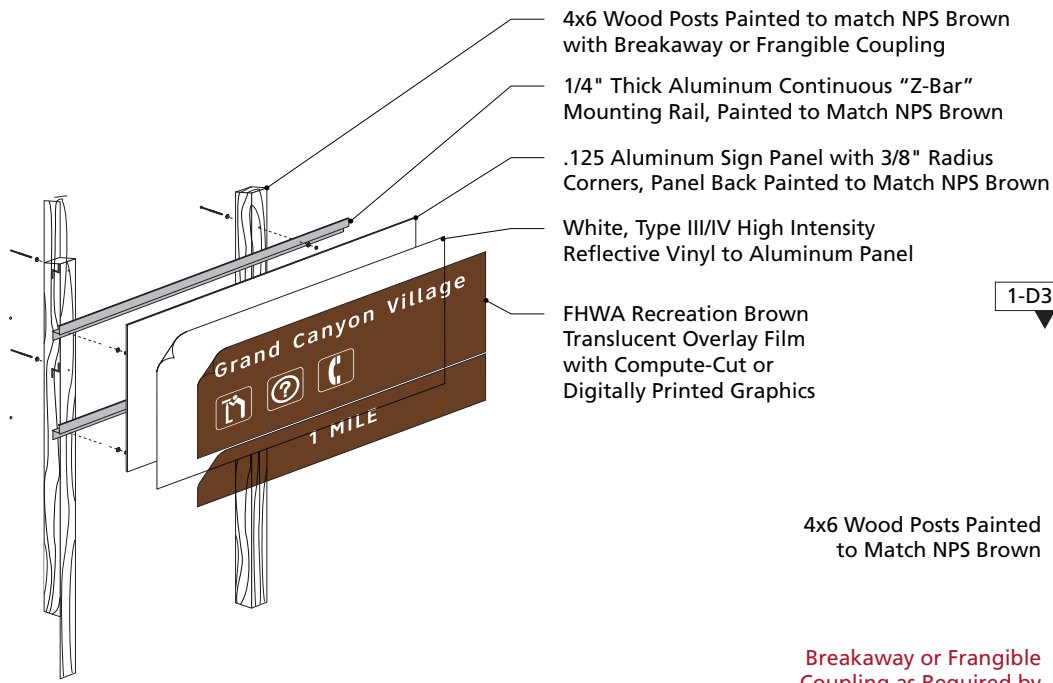
4" Cap Height Clearview 2W- 62" x 38"



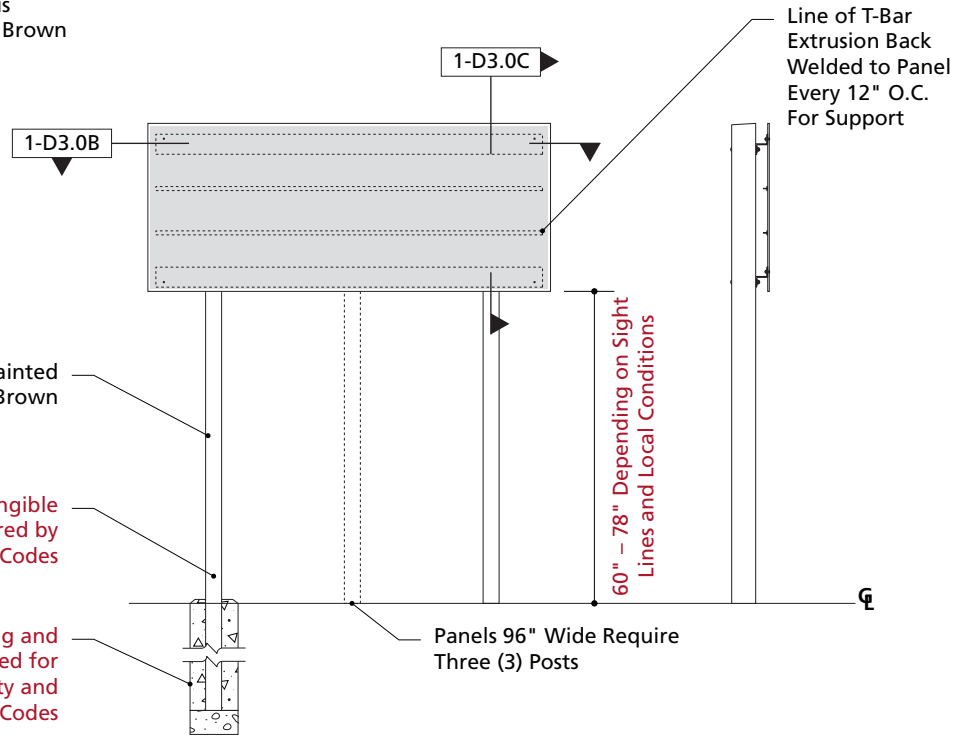
Location: Old Mass Ave, Lexington

4" Cap Height Clearview 2W- 62" x 38"

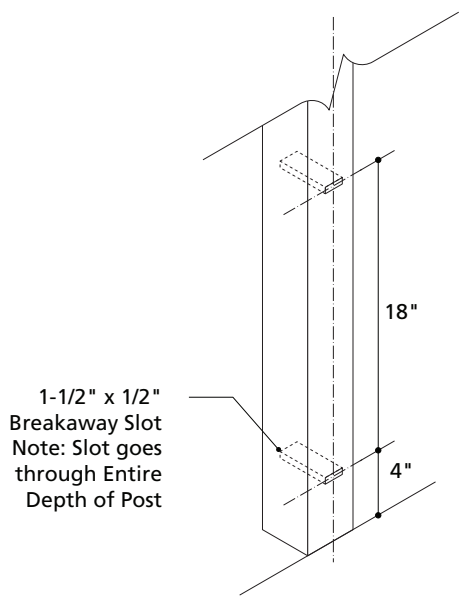
Minute Man National Historical Park	Description Notes		Project Number	
	TBD		MIMA-2022-1392-ID	
Identity Sign Project			Drawing Date	Page
National Park Service Harpers Ferry Center Media Development Signs	Scale:	1/2" = 1" - 0"	08/18/2022	2.0



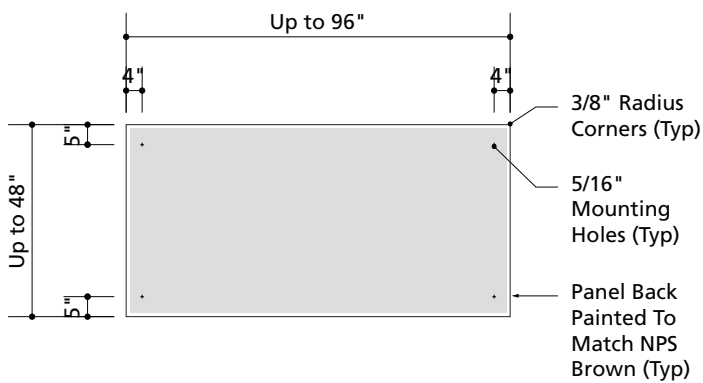
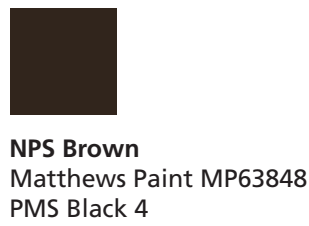
1-D3.0 NPS Standard .125 Aluminum Sign Fabrication



3-D3.0 NPS Standard .125 Aluminum Sign Front and Side Elevations



2-D3.0 Breakaway Wood Post Detail

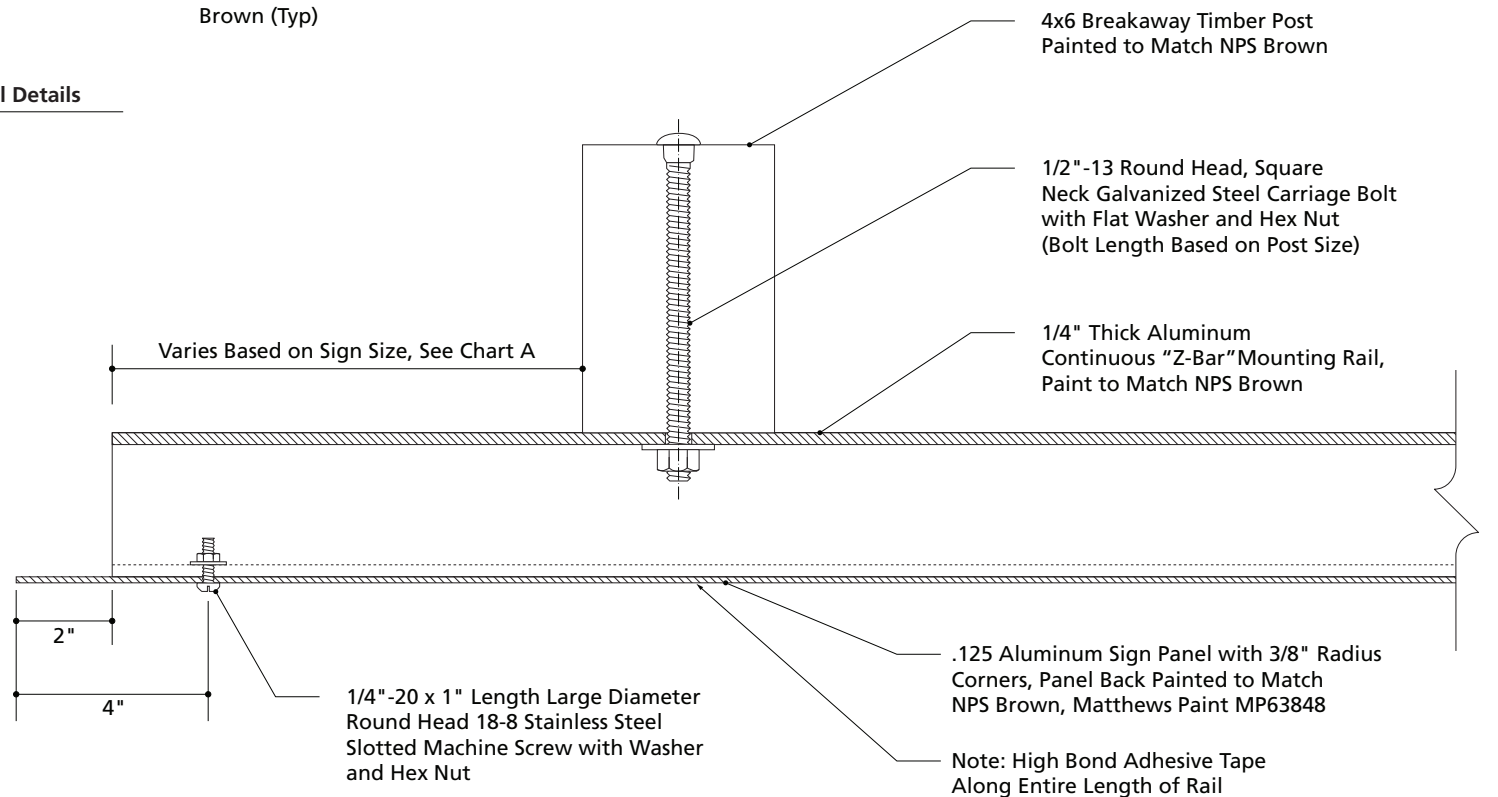


1-D3.0A Typical .125 Aluminum Panel Details

Single Sheet, Four (4) Mounting Holes


Chart A

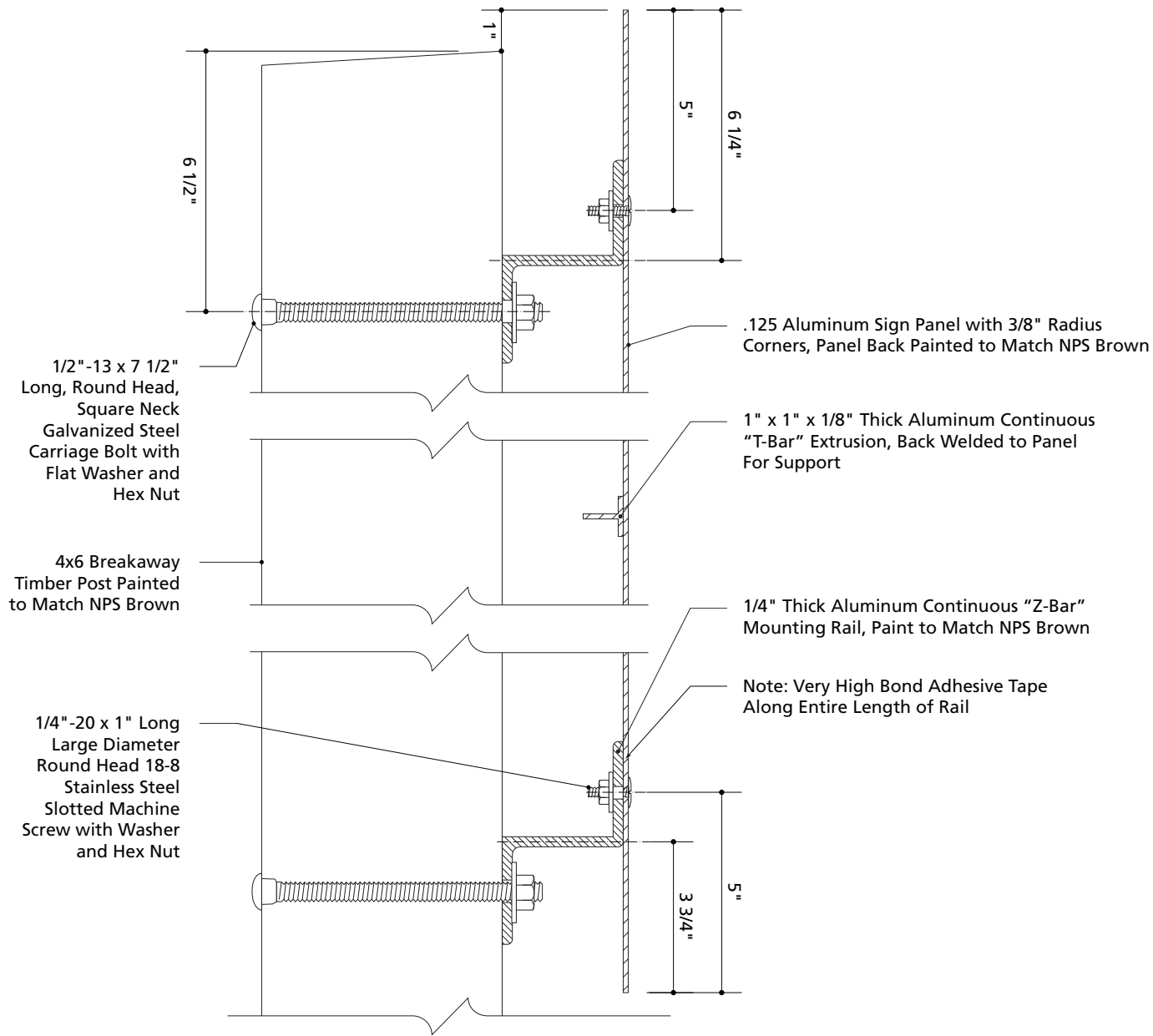
Panel Width	Post Inset to Panel Edge
60" or smaller	6"
62" - 70"	8"
72" - 94"	10"
96"	12"



1-D3.0B Panel-Post Attachment Detail - Top Section

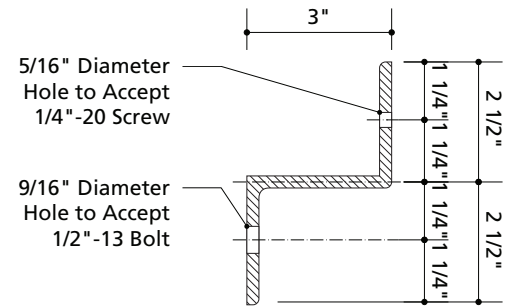
Scale: 3" = 1'-0"

Minute Man National Historical Park	Description Notes	Project Number	
	TBD	MIMA-2022-1392-ID	
Identity Sign Project	Scale: n/a	Drawing Date	Page
National Park Service Harpers Ferry Center Media Development Signs		08/18/2022	3.0




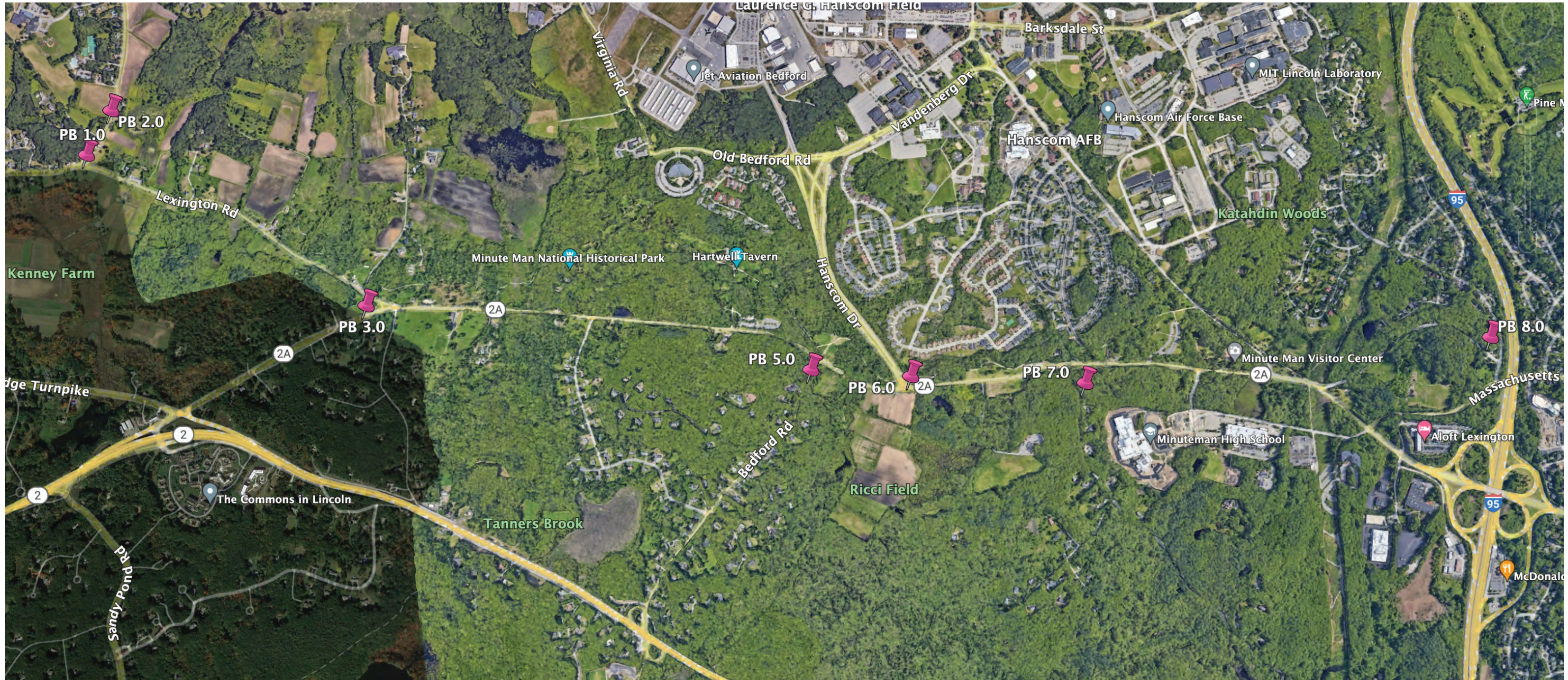
1-D3.0C Aluminum Sign Side Section


Note: Panel Back, Z-Bar Mounting Rails, and T-Bar Extrusions Painted to Match NPS Brown, Matthews Paint MP63848



2-D3.0C "Z-Bar" Mounting Rail Detail

Minute Man National Historical Park	Description Notes	Project Number	
	TBD	MIMA-2022-1392-ID	
Identity Sign Project	National Park Service Harpers Ferry Center Media Development Signs	Drawing Date	Page
		08/18/2022	4.0
Scale: n/a			



Minute Man National Historical Park	Description Notes	Project Number	 Page 5.0
	TBD	MIMA-2022-1392-ID	
Identity Sign Project		Drawing Date	
National Park Service Harpers Ferry Center Media Development Signs	Scale: n/a	02/10/2023	