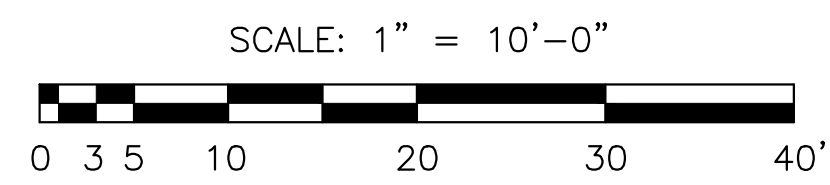
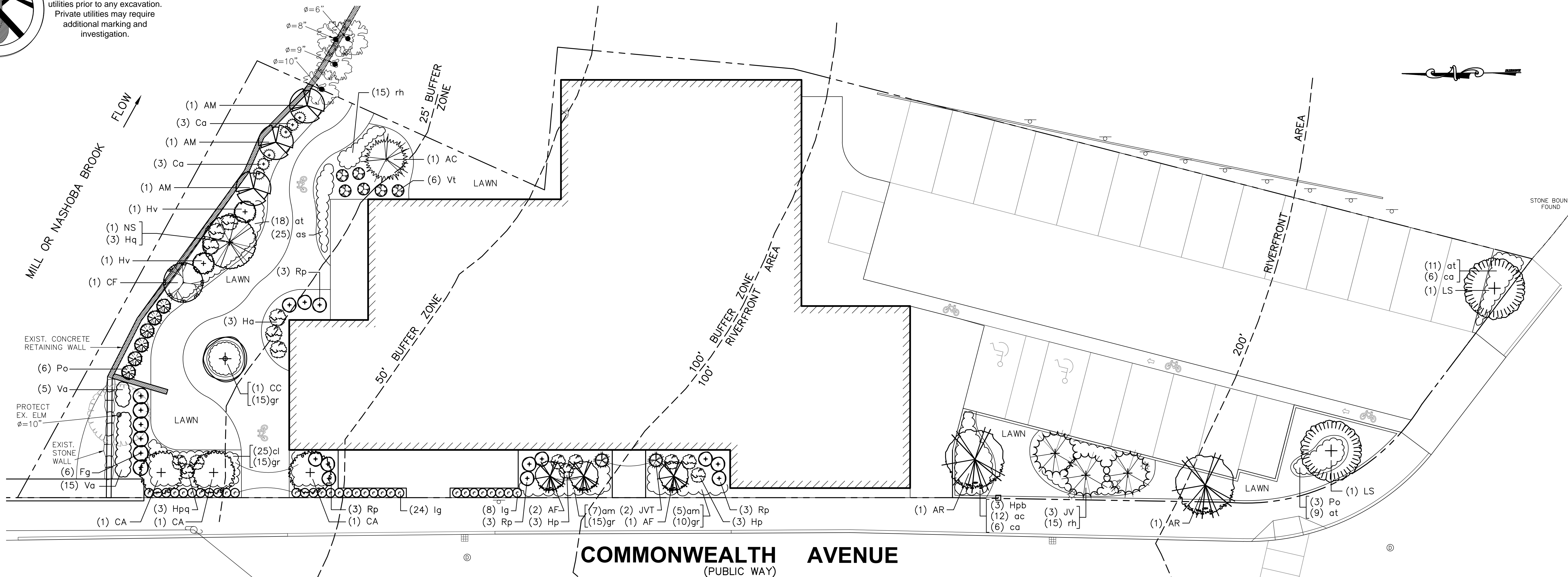




Call DIGSAFE, 1-888-344-7233, for location and marking of all utilities prior to any excavation. Private utilities may require additional marking and investigation.



PLANTING NOTES:

- Trees and shrubs shall be uniform, full and bushy, and well branched specimen plants. All plants to be approved by the Landscape Architect.
- Plants shall be balled and burlapped or container grown.
- Plants to conform to the requirements established in the 'American Standards For Nursery Stock', latest edition.
- Plant beds to receive 3-inch minimum depth of shredded bark mulch. Contractor to submit bark samples for approval.
- Plant materials shall be guaranteed for one year (1-year) after installation.
- Plant materials shall be field located and approved by the Landscape Architect.
- Plant beds at perennials to have a 6-in. min. depth of loam. Loam at trees, shrubs, and ornamental grass locations to be depth of root ball.
- Loam (3" minimum depth) and seed all lawn areas and disturbed areas not noted to receive other treatment.
- Plant substitutions will be allowed based on best availability of nursery stock, with all substitutions to be approved by the Landscape Architect.

PLANT LIST:

| Qty. | Sym. | Botanical Name | Common Name | Size |
|------------------------------------------|------|-----------------------------------------|---------------------------------|----------------|
| 1 | AC | Abies concolor | White Fir | 12' ht. B&B |
| 3 | AF | Acer x freemanii 'Jeffsred' | Autumn Blaze Maple | 2.5 - 3" cal. |
| 3 | AM | Amelanchier canadensis | Downy Shadblow / Serviceberry | 6 / 7' ht. B&B |
| 2 | AR | Acer rubrum 'October Glory' | October Glory Red Maple | 2.5 - 3" cal. |
| 3 | CA | Carpinus caroliniana 'Palisade' | Palisade American Hornbeam | 2 - 2.5" cal. |
| 1 | CC | Cercis canadensis | Eastern Redbud | 2 - 2.5" cal. |
| 1 | CF | Cornus florida | Flowering Dogwood | 2 - 2.5" cal. |
| 3 | JV | Juniperus virginiana | Eastern Red Cedar | 8 - 10' height |
| 2 | JVT | Juniperus virginiana 'Taylor' | Taylor Juniper | 6' ht. B&B |
| 2 | LS | Liquidambar styraciflua 'Ward' | Cherokee Sweetgum | 2.5 - 3" cal. |
| 1 | NS | Nyssa sylvatica 'Wild Fire' | Wild Fire Black Tupelo | 2.5 - 3" B&B |
| SHRUBS - DECIDUOUS AND EVERGREEN: | | | | |
| 6 | Ca | Clethra alnifolia 'Hummingbird' | Hummingbird Summersweet | 5 gallon pot |
| 6 | Fg | Fothergilla gardenii | Dwarf Fothergilla | 7 gallon pot |
| 3 | Ha | Hydrangea arborescens 'Incrediball' | Incrediball Hydrangea | 7 gallon pot |
| 6 | Hp | Hydrangea paniculata 'LimeLight' | LimeLight Hydrangea | 7 gallon pot |
| 3 | Hpb | Hydrangea paniculata 'Bobo' | Bobo Hydrangea | 5 gallon pot |
| 3 | Hpq | Hydrangea paniculata 'Quick Fire' | Quick Fire Hydrangea | 7 gallon pot |
| 2 | Hq | Hydrangea quercifolia 'Alice' | Alice Oakleaf Hydrangea | 7 gallon pot |
| 2 | Hv | Hammamelis virginiana | Common Witchhazel | 10 gallon pot |
| 32 | Ig | Ilex glabra | Inkberry | 7 gallon pot |
| 9 | Po | Physocarpus opulifolius 'Summer Wine' | Summer Wine Ninebark | 7 gallon pot |
| 12 | Rp | Rhododendron 'PJM' | PJM Rhododendron | 7 gallon pot |
| 20 | Va | Vaccinium angustifolium | Lowbush Blueberry | 3 gallon pot |
| 6 | Vt | Viburnum trilobum | American Cranberrybush | 7 gallon pot |
| PERENNIALS AND GRASSES: | | | | |
| 12 | ac | Achillea millefolium 'New Vintage Rose' | New Vintage Rose Yarrow | 1 gallon pot |
| 25 | am | Allium millenium | Millenium Onion | 1 gallon pot |
| 12 | as | Asclepias tuberosa | Butterfly Milkweed | 1 gallon pot |
| 38 | at | Amonsia tabernaemontana | Star Flower | 1 gallon pot |
| 12 | ca | Calamagrostis x acut. 'Karl Foerster' | Karl Foerster Feather Rd. Grass | 2 gallon pot |
| 25 | cl | Coreopsis lanceolata | Lanceleaf Coreopsis | 1 gallon pot |
| 55 | gr | Geranium x 'Rozanne' | Rozanne Cranesbill | 1 gallon pot |
| 30 | rh | Rudbeckia hirta | Black-eyed Susan | 1 gallon pot |

REVISION BLOCK

| DESCRIPTION | DATE |
|-------------|------|
| | |
| | |

Cosmos Associates

Landscape Architects & Site Planners
5 Longview Street
Natick, MA 01760
p: 508.654.6847
www.cosmosassociates.com

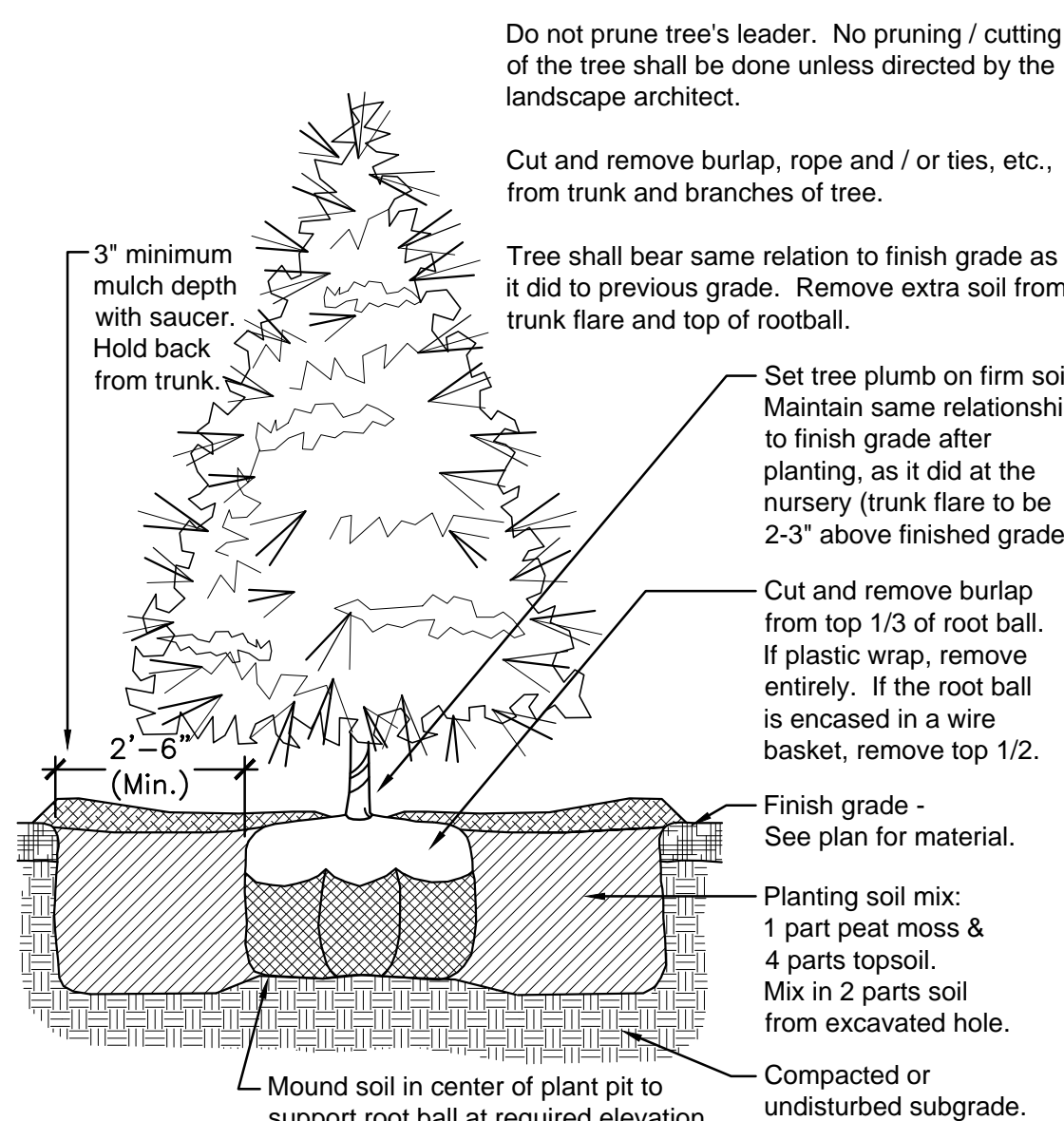
166 COMMONWEALTH AVE
CONCORD
MASSACHUSETTS



| | |
|--------------|-----------|
| DATE: | 5/12/2023 |
| DRAWN BY: | R.C. |
| CHECKED BY: | S.C. |
| APPROVED BY: | S.C. |

**PROPOSED
LANDSCAPE PLAN**

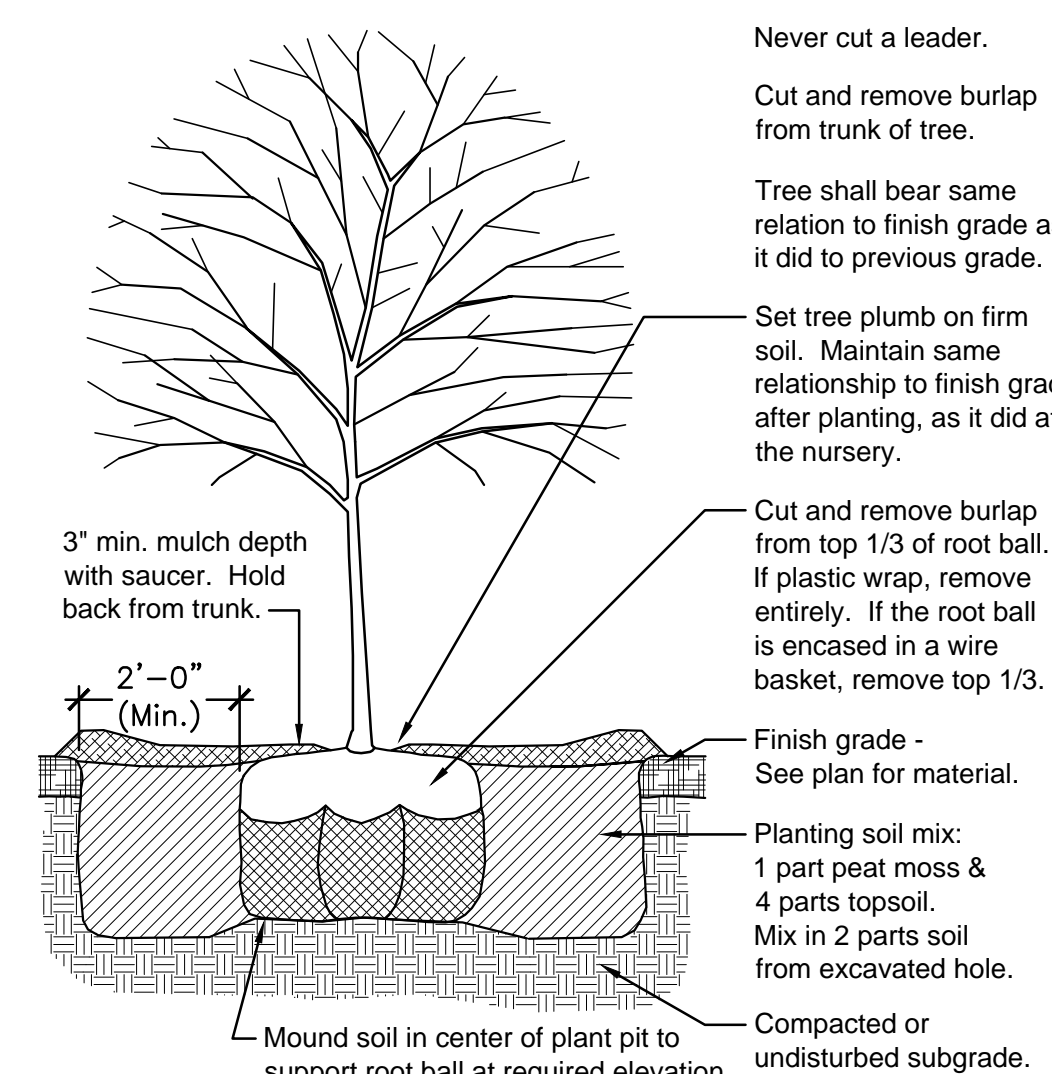
SHEET 1 OF 1



- NOTES:**
- Flood saucer twice during the first 24-hours after planting.
 - Soak each tree twice weekly, for (3) weeks after fall planting.
 - Soak each tree twice weekly, during spring and summer planting.

1 TYP. EVERGREEN TREE PLANTING

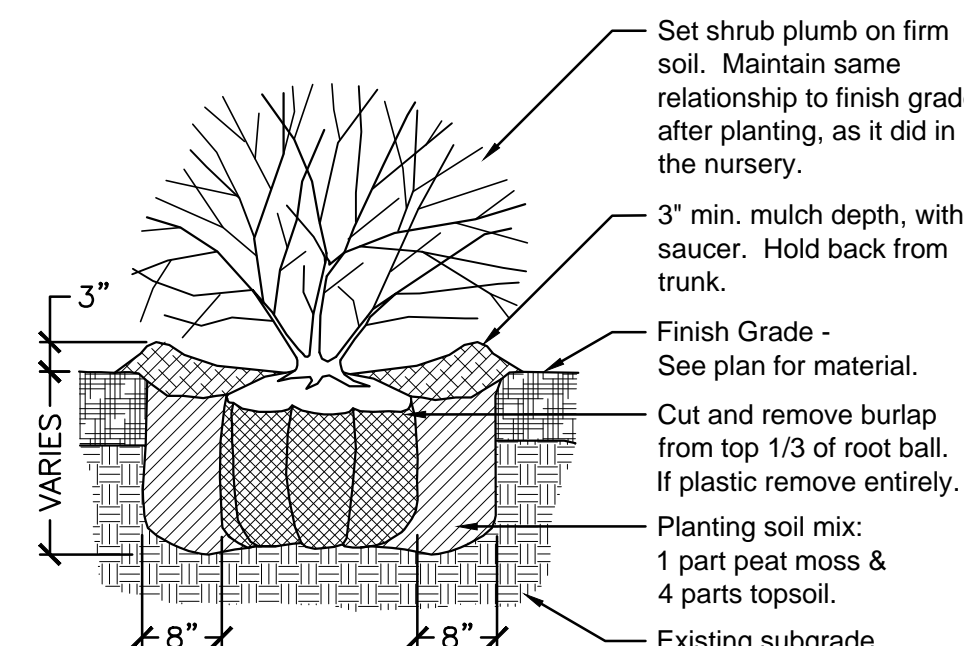
Scale: 1/2" = 1' - 0"



- NOTES:**
- Soak each tree twice weekly, for (3) weeks after fall planting
 - Soak each tree twice weekly, during spring and summer planting.
 - Contractor to provide a price for staking of each individual tree.

2 TYP. DECIDUOUS TREE PLANTING

Scale: 1/2" = 1' - 0"



- NOTES:**
- New shrub beds to have a minimum of one foot planting soil.
 - Shrubs to be full and bushy.

3 TYPICAL SHRUB PLANTING

Scale: 3/4" = 1' - 0"

COSMOS ASSOCIATES SHALL NOT BE RESPONSIBLE FOR CONSTRUCTION MEANS, METHODS, TECHNIQUES, OR PROCEDURES UTILIZED BY THE CONTRACTOR, NOR FOR THE SAFETY OF PUBLIC OR CONTRACTOR'S EMPLOYEES, OR FOR THE FAILURE OF THE CONTRACTOR TO CARRY OUT THE WORKING ACCORDANCE WITH THE CONTRACT DOCUMENTS.

COPYRIGHT (C) by COSMOS ASSOCIATES
All Rights Reserved

NO PART OF THIS DOCUMENT MAY BE REPRODUCED, STORED IN A RETRIEVAL SYSTEM, OR TRANSMITTED IN ANY FORM OR BY ANY MEANS, ELECTRONIC, MECHANICAL, PHOTOCOPYING, RECORDING OR OTHERWISE, WITHOUT THE PRIOR WRITTEN PERMISSION OF COSMOS ASSOCIATES. ANY MODIFICATIONS TO THIS DOCUMENT WITHOUT THE WRITTEN PERMISSION OF COSMOS ASSOCIATES SHALL RENDER IT INVALID AND UNUSABLE.