

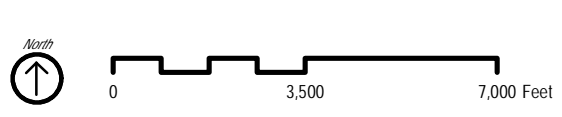
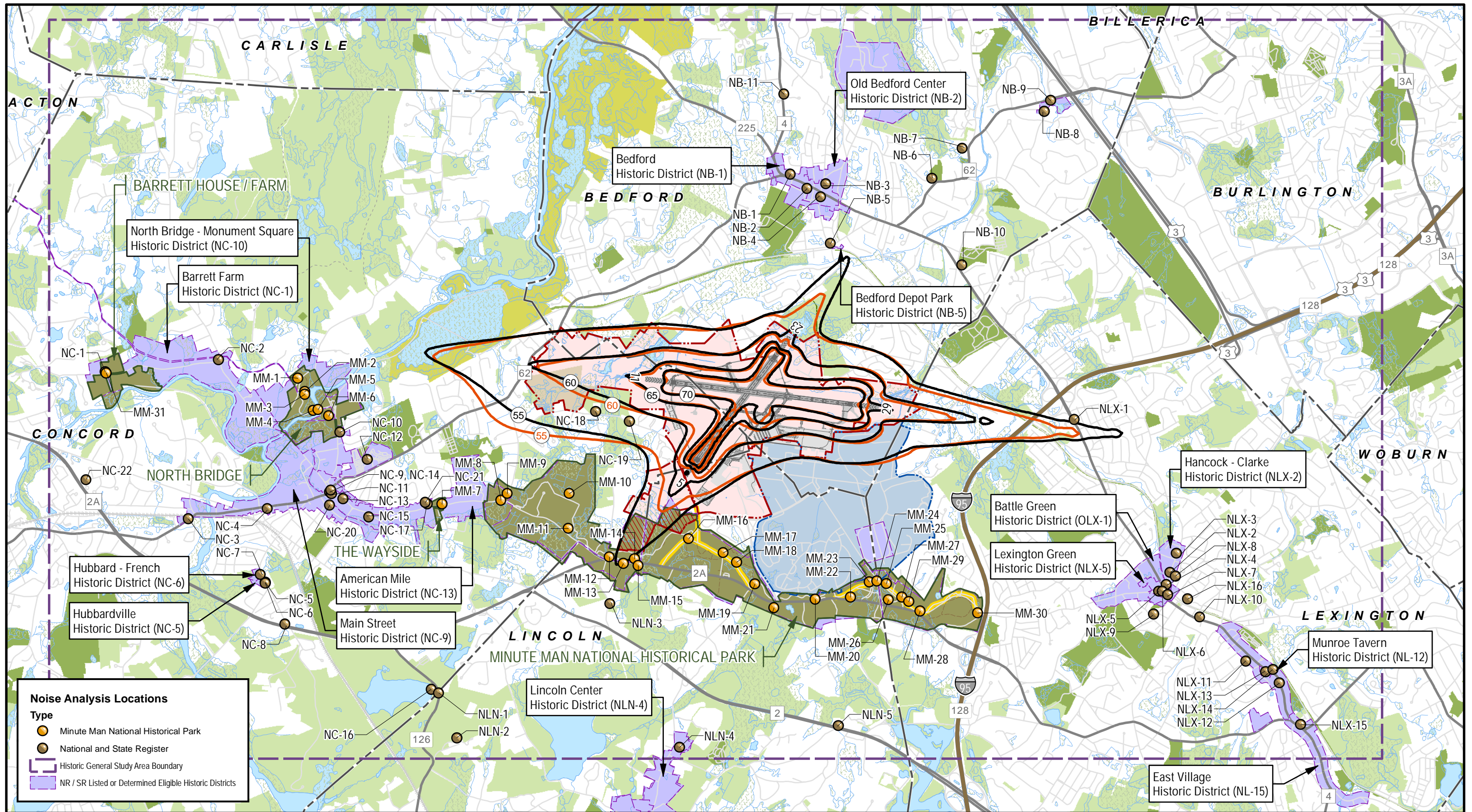
Data Sources: Massport (ALP) October 24, 2017; MassGIS (Roads, Rail), July 30, 2018; MassGIS (Bike Trails, Tracks and Trails), July 30, 2018; MassGIS (Community Boundaries), July 30, 2018; MassGIS (DEP Wetlands), July 30, 2018; NPS (Park Boundary), July 30, 2018; NPS (Streets and Trails), July 30, 2018; PAL, Inc. (Noise Sensitive Receptors), October 5, 2018

- NR / SR Listed or Determined Eligible Historic Districts
- Historic General Study Area Boundary
- Hanscom Field Property Boundary
- Massport Property within MMNHP Congressional Boundary
- Hanscom AFB Property Boundary
- Municipal Boundary
- Historic Road
- Interstate
- Highway
- Road
- Trail
- Open Water
- Wetland/Marsh
- Stream
- MMNHP Boundary
- Great Meadows
- Open Space Non-protected
- Open Space Protected in Perpetuity

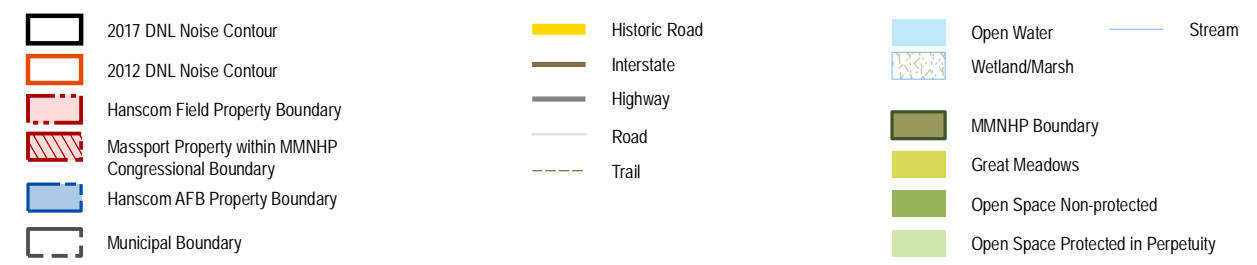
massport **L. G. Hanscom Field**
2017 Environmental Status & Planning Report

Historic Resources Included as Noise Analysis Locations

Figure 10-2

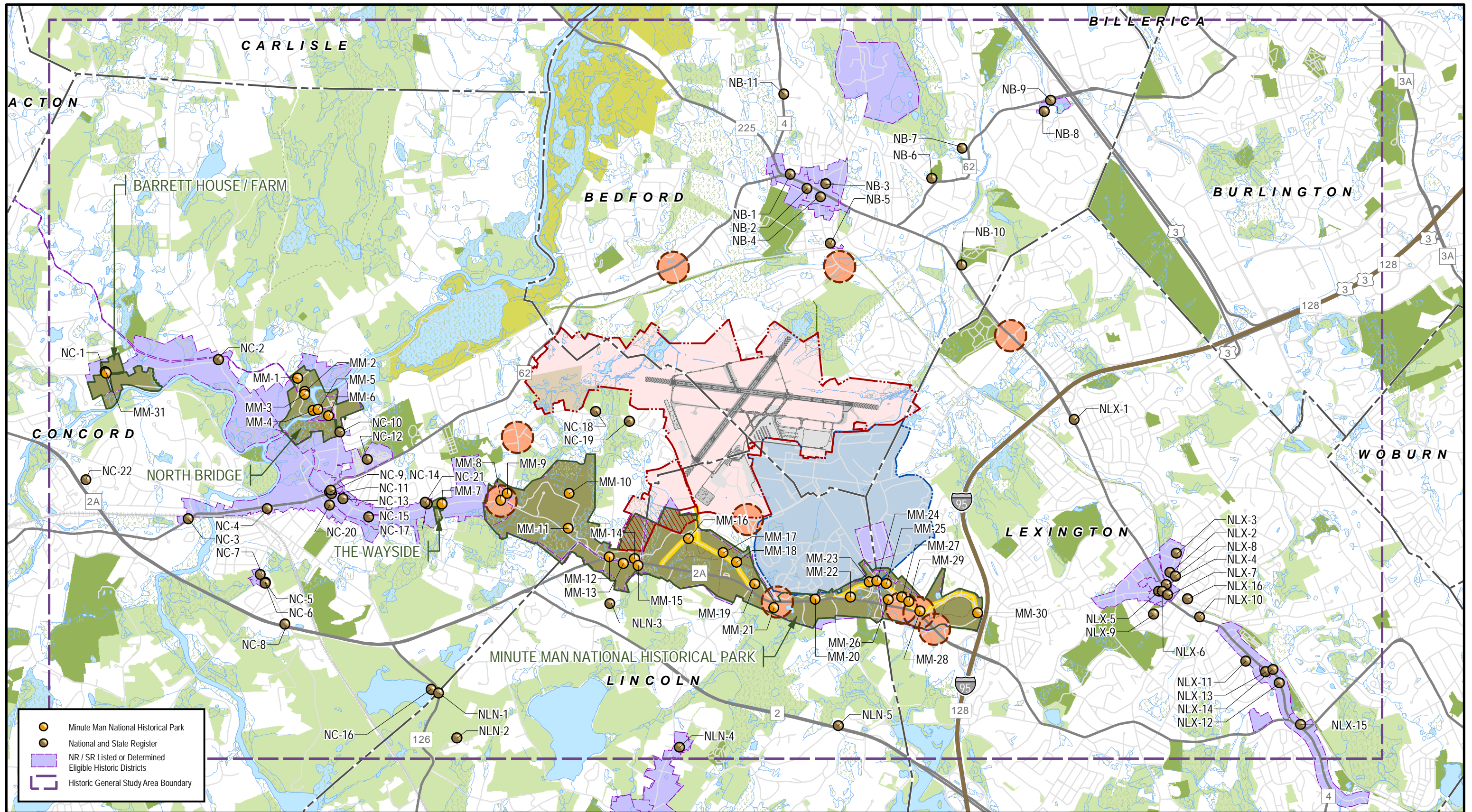


Data Sources: Massport (ALP) October 24, 2017; MassGIS (Roads, Rail), July 30, 2018; MassGIS (Bike Trails, Tracks and Trails), July 30, 2018; MassGIS (Community Boundaries), July 30, 2018; MassGIS (DEP Wetlands), July 30, 2018; NPS (Park Boundary), July 30, 2018; NPS (Streets and Trails), July 30, 2018; PAL, Inc. (Noise Sensitive Receptors), October 5, 2018



Historic Resources within the 2012 and 2017 DNL Noise Contours

Figure 10-3



- Minute Man National Historical Park
- National and State Register
- NR / SR Listed or Determined Eligible Historic Districts
- Historic General Study Area Boundary



- Traffic Study Intersection
- Hanscom Field Property Boundary
- Massport Property within MMNHP Congressional Boundary
- Hanscom AFB Property Boundary
- Municipal Boundary
- Historic Road
- Interstate
- Highway
- Road
- Trail
- Open Water
- Wetland/Marsh
- MMNHP Boundary
- Great Meadows
- Open Space Non-protected
- Open Space Protected in Perpetuity
- Stream

L. G. Hanscom Field

2017 Environmental Status & Planning Report

Data Sources: Massport (ALP) October 24, 2017; MassGIS (Roads, Rail), July 30, 2018; MassGIS (Bike Trails, Tracks and Trails), July 30, 2018; MassGIS (Community Boundaries), July 30, 2018; MassGIS (DEP Wetlands), July 30, 2018; NPS (Park Boundary), July 30, 2018; NPS (Streets and Trails), July 30, 2018; MassGIS (Building Footprints), July 30, 2018; PAL, Inc. (Noise Sensitive Receptors), October 5, 2018

**Historic Resources Near
Traffic Study Intersections**

Figure 10-4