

Residence
615 Lowell Road
Concord, MA

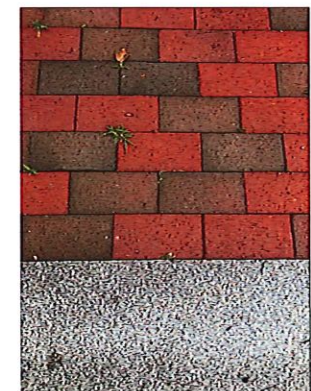
fisher design group
www.fisherdg.com

DATE: 12/05/2022
SCALE: 1"=10'

8 (NGVD)



Granite Post and Wood Rail Image



Granite and Brick Walkway Image

Qty.	Sym.	Scientific Name	Common Name	Size	Comments
Plant List					
Deciduous Trees					
2	AR	Acer saccharum 'Legacy'	Legacy Sugar Maple	3" Cal.	B&B
1	AP	Acer palmatum 'Ryusen'	Ryusen Japanese Maple	2.5'-3' Tall	B&B
3	BN	Betula nigra 'Dura Heat'	Dura Heat River Birch	8'-10' Tall	B&B, Multi Stem
2	CF	Cornus florida	Flowering Dogwood	2.5'-3" Cal.	B&B
1	CK	Cornus kousa	Kousa Dogwood	2.5'-3" Cal.	B&B
Evergreen Trees					
7	TS	Thuja occidentalis 'Smaragd'	Emerald Green Arborvitae	8'-10' Tall	B&B
10	TO	Thuja occidentalis 'Elegantissima'	Gold Tipped Arborvitae	7'-8' Tall	B&B
Shrubs					
10	BX	Buxus sempervirens	Common Boxwood	2.5'-3' Tall	B&B
4	HP	Hydrangea macrophylla 'Nikko Blue'	Nikko Blue Hydrangea	2.5'-3' tall	B&B
1	PJ	Pieris japonica 'Brouwer's Beauty'	Brouwer's Beauty Andromeda	2'-3' tall	B&B
3	RN	Rhododendron nova zembla	Nova Zembla Rhododendron	2.5'-3' tall	B&B
9	SP	Syringa patula 'Miss Kim'	Miss Kim Lilac	2'-3' tall	B&B

- Materials Specifications**
- Fence: Reclaimed Granite Post (8" sq.), 4" sq. Cedar Rails Painted White
 - Brick: 4"x8" Red Clay Pavers by Harts and Stiles or similar
 - Bluestone: True Blue Select Thermal Bluestone. Sweep joints with polymeric sand upon completion.
 - Granite Steps and Thresholds: Chelmsford Gray, Thermal finish
 - Lamp Post and Mail Box: Oxford Lantern Post (cellular PVC) as manufactured by Walpole Woodworkers (walpolewoodworkers.com) or approved equal.
 - Bark Mulch: Naturally aged dark Brown/Black Mulch

Sheet L1.01

Site Plan