

Concord Town Plans – 1907-1910
“Stickney” Maps

NORTH-WEST SECTION.

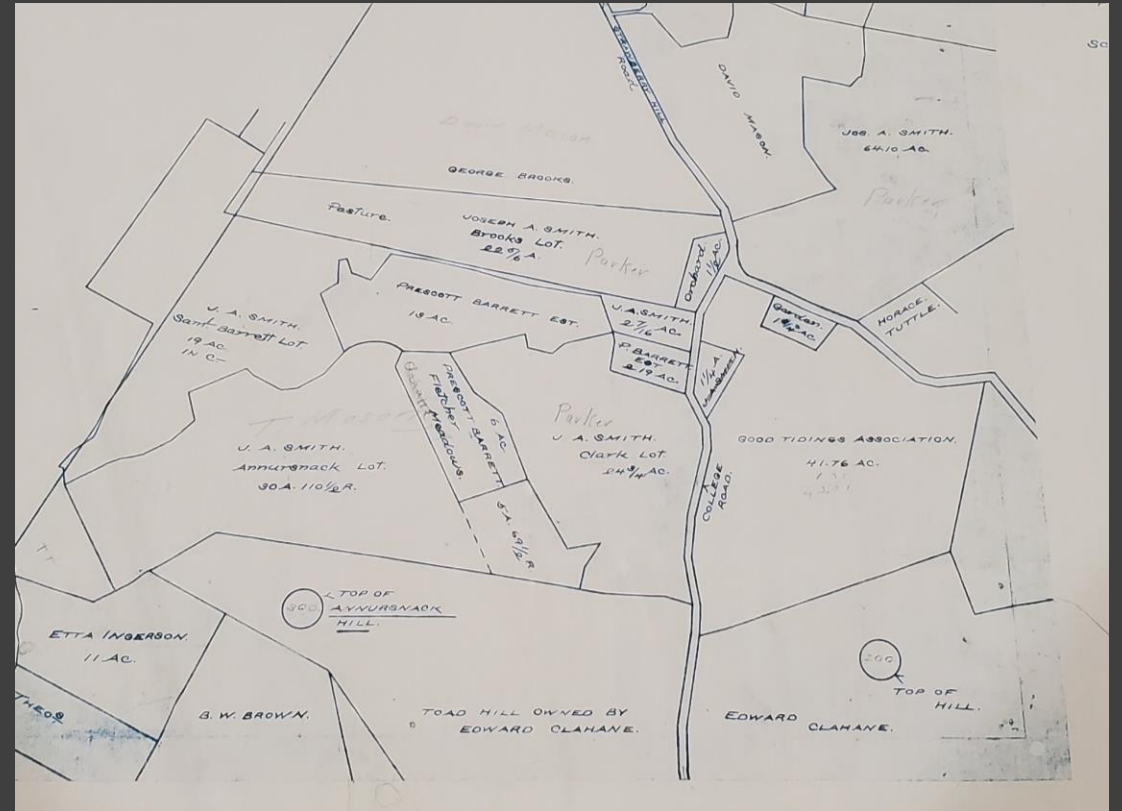
ANNURSNACK.
HILL.

TOWN PLAN
OF
CONCORD,-
MASS.

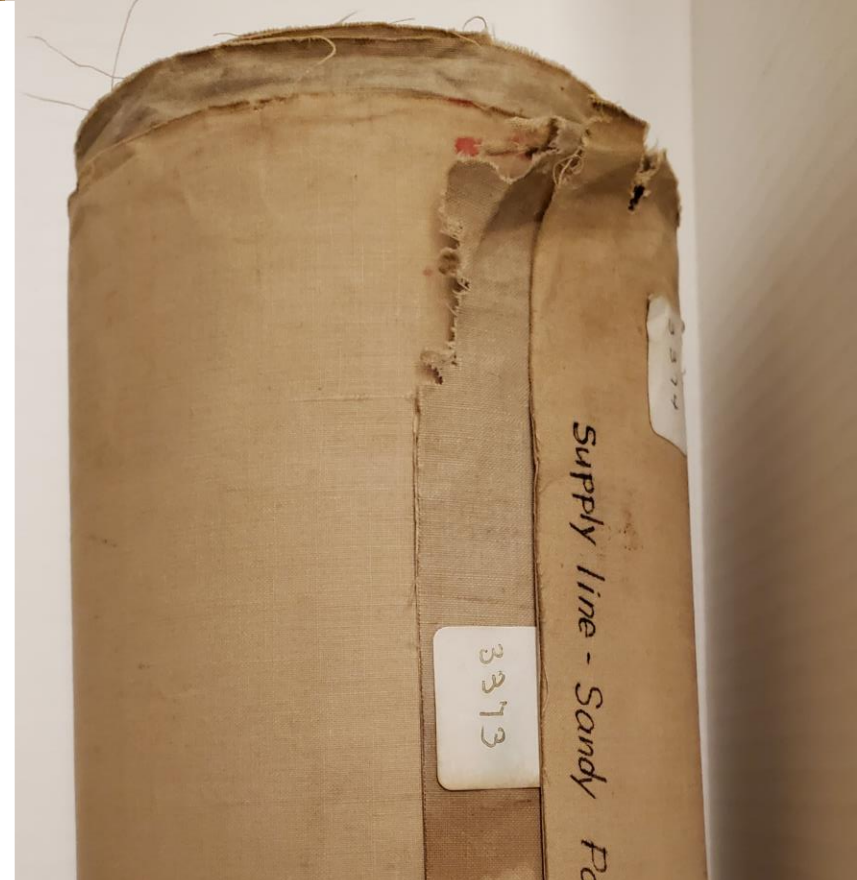
COMPILED BY
FRANK W. STICKNEY,
WEST TOWNSEND,
MASS.
1907-1910.

FROM PLANS MADE BY ALBERT E. WOOD,
— AND, OTHERS.

Scale, — 6 CHAINS, OR 24 RODS, = 396 FEET TO 1 INCH.



Concord Town Plans – 1907-1910
“Stickney” Maps



Concord Water Works Plans – 1874-1875