

39'-6"
 5'-6"
 30'-0"
 16'-0"
 14'-0"
 5'-6"

85'-0"
 20'-2 1/4"
 24'-0"
 11'-0"
 13'-11"
 24'-0"
 13'-0"
 11'-0"
 3'-6" 2 1/2"

FIRST FLOOR PLAN
 UNIT A UNIT B

UNIT A	
FIRST FLOOR - 856 sq ft	
SECOND FLOOR - 811 sq ft	
TOTAL	1667 sq ft

UNIT B	
FIRST FLOOR - 856 sq ft	
SECOND FLOOR - 811 sq ft	
TOTAL	1667 sq ft

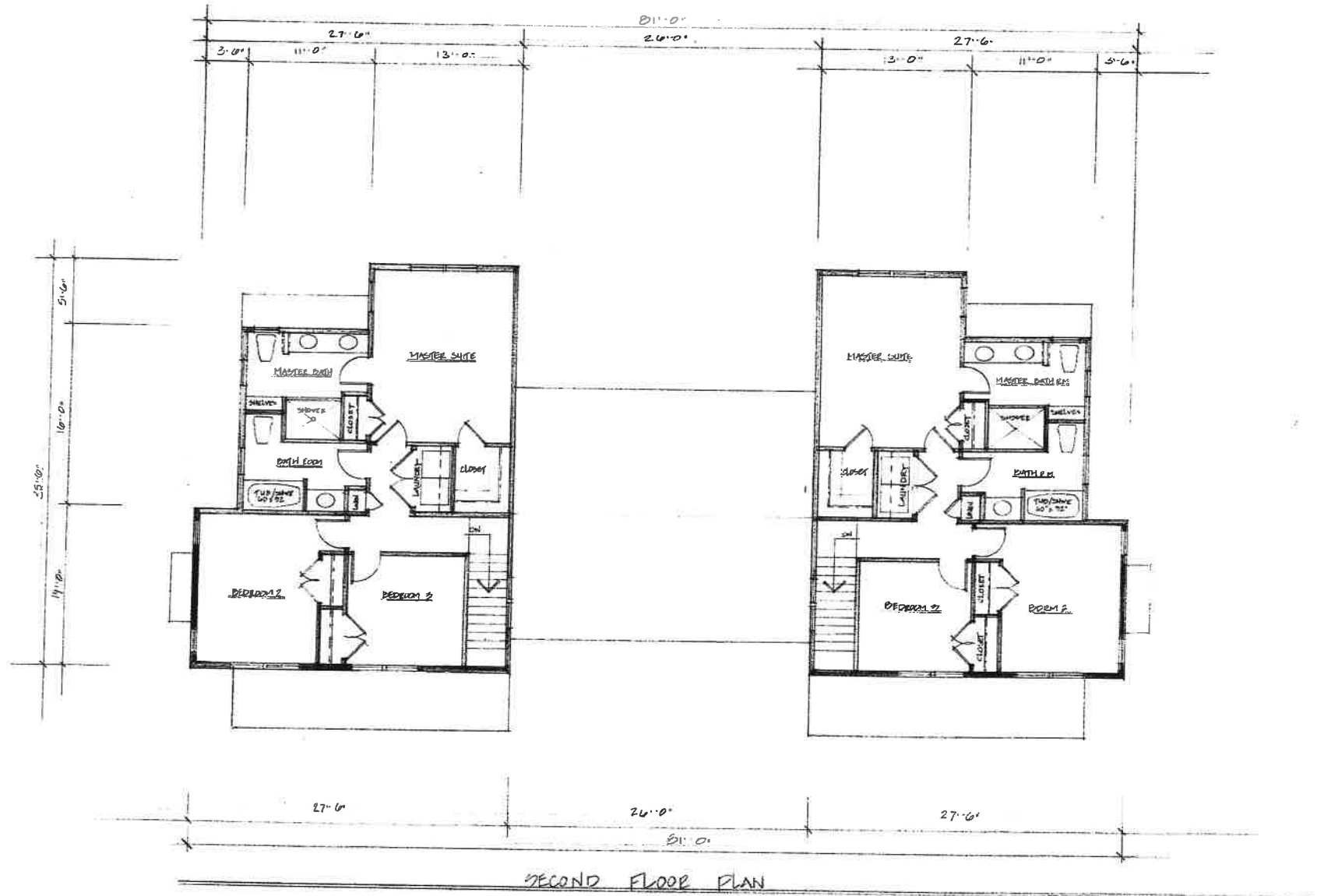
AREA 572
 TOTAL COST UNIT 3966.00

REVISIONS

Eliot Braccas Stone Architects
 588 Old Marlboro Road, Concord, MA 01734
 (617) 366-0359

127.1.1016 CONANT ST.
 CONCORD MA
 DUPLEX - FIRST FLOOR PLAN

DRAWN	
CHECKED	
DATE	
SCALE	1/4" = 1'-0"
JOB NO.	1077
SHEET	A1
TOTAL SHEETS	02



REVISIONS	BY

Elise Braceras Stone Architects
 288 OMA Highway Road, Concord, MA 01746
 (617) 206-6339
 elstone@comcast.net

104 S. DIXIE CONANT ST
 CONCORD MA
 DUPLEX SECOND FLOOR PLAN

DESIGNER
CHECKED
DRAWN
SCALE 1/4" = 1'-0"
JOB NO.
SHEET A-2
DATE



FRONT ELEVATION



LEFT SIDE ELEVATION

Proposed
structure

REVISIONS	BY

Elise Braccers Stone Architects
 230 Old Marlboro Road, Uxbridge MA 01568
 (413) 306-6399

04 s. side CONANT ST
 CONCORD MA
 D.I. LEE ELEVATION

DESIGN
CHECKED
DATE 2/22/22
SCALE 1/4" = 1'-0"
SHEET
A.3
OF SHEETS



REAR ELEVATION



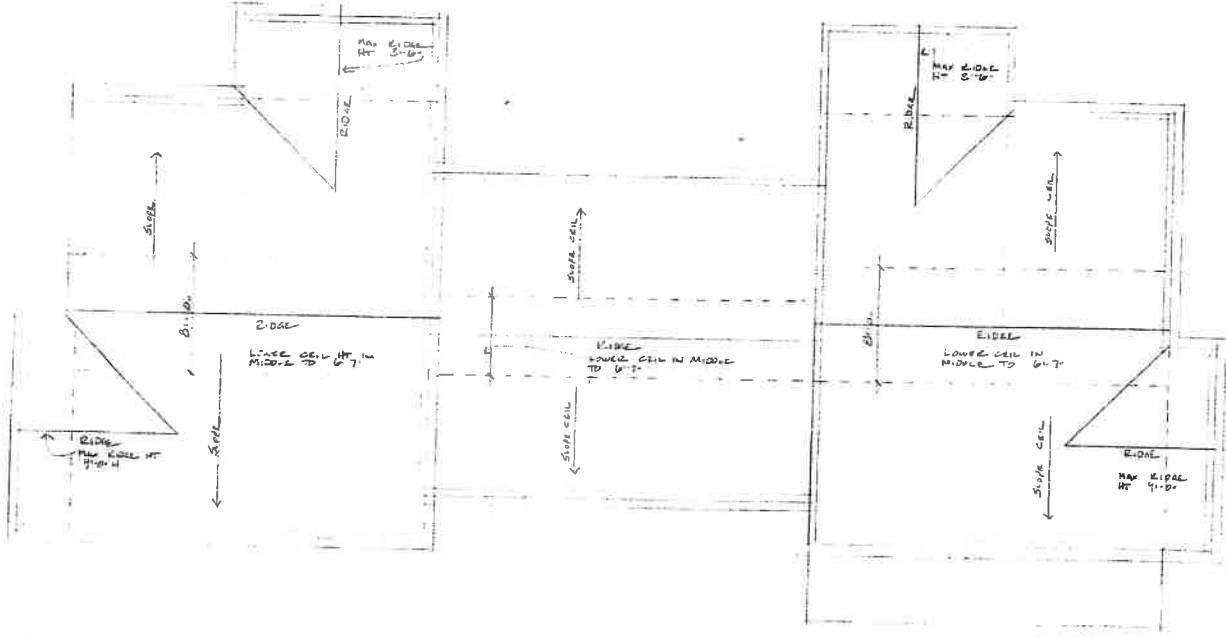
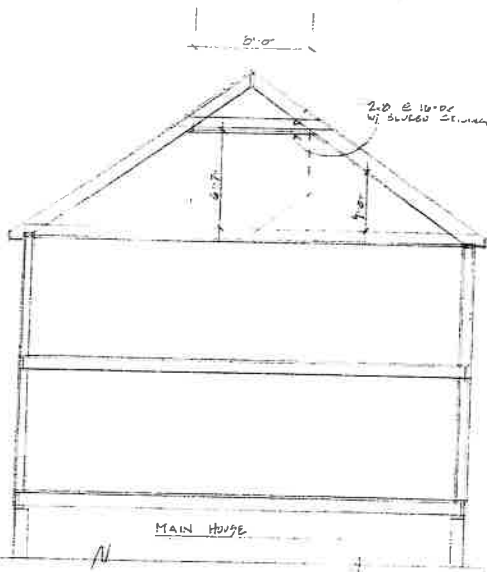
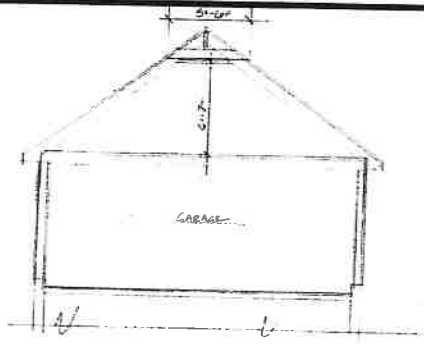
RIGHT SIDE ELEVATION

REVISIONS	BY

Elise Braccas Stone, Architects
 288 Old Marlboro Road, Concord MA 01734
 phone@braccasstone.com

104 A 106 CONANT ST
 CONCORD MA
 ELEVATIONS

OWNER
DATE
SCALE
JOB NO.
SHEET
A4



ROOF PLAN - ATTIC CEILING HT

REVISIONS	

Elise Braceras Stone Architects
 208 Old Millbrook Road Concord MA 01734
 (617) 386-6339

104 1/2 106 CONANT ST
 CONCORD MA
 ROOF PLAN / CEILING HT PLAN

DESIGNED
CHECKED
DATE
SCALE
JOB NO.
SHEET
A5
OF SHEETS