

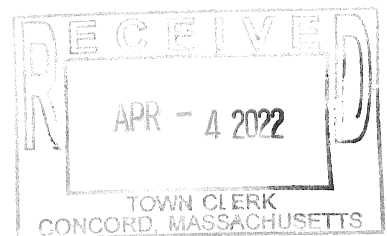
Renderings  
 Kathleen Murillo  
 (978) 549-3671  
 approximate measurements  
 ©2018  
 September 18, 2018

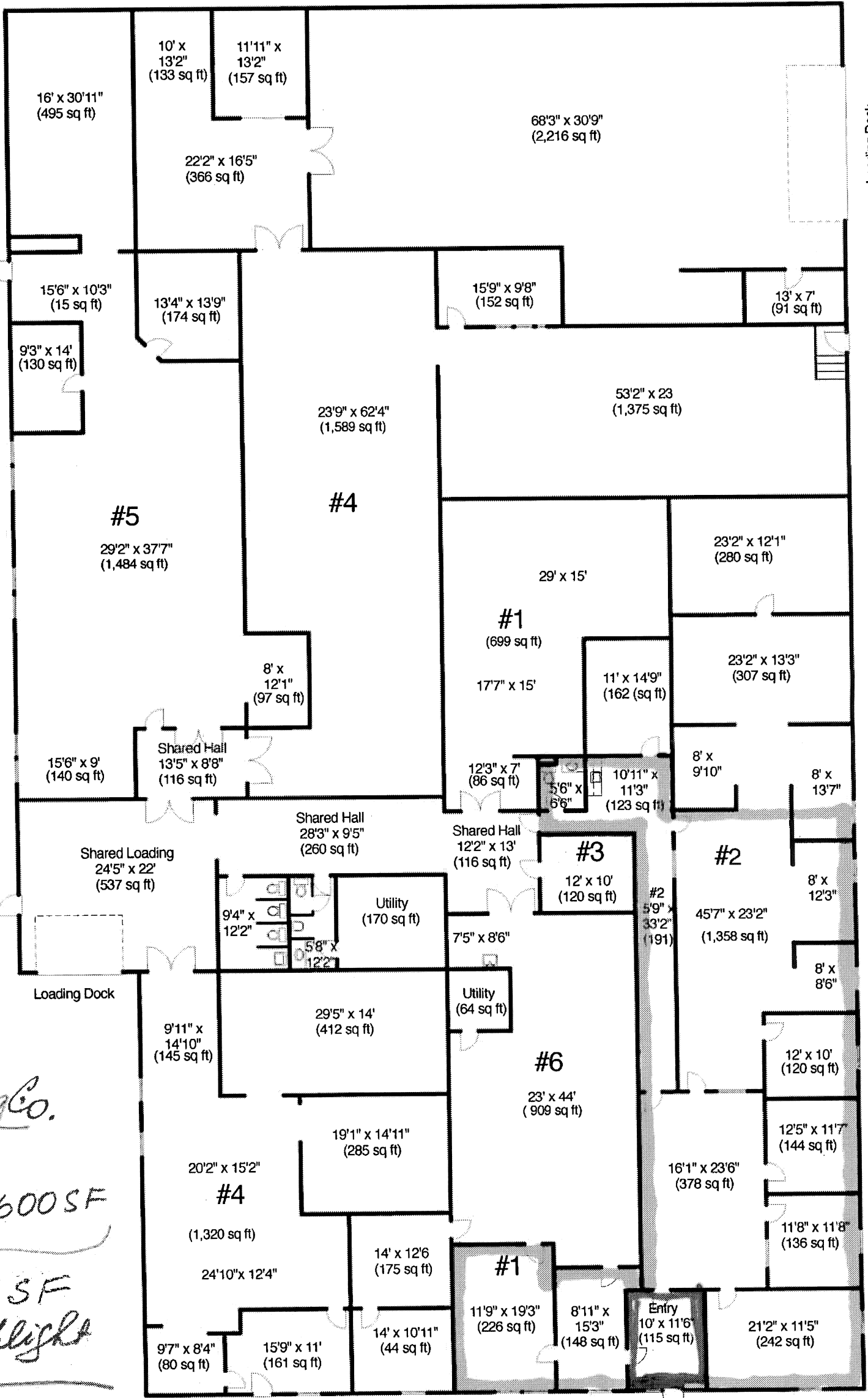
**40 Beharrell Street, Concord, Massachusetts**

RECEIVED

APR - 4 2022

Town of Concord  
 Board of Appeals





*Boston Dog Co.*  
 #1 + #2  
 3,475SF + 2,600SF  
 2,974SF  
 green highlight  
 Entry 115SF  
 pink highlight  
**TOTAL 3,089SF**

**40 Beharrell Street, Concord, Massachusetts**

APR 22  
 Town of Concord Board of Appeals  
 RECEIVED  
 APR - 4 2022  
 TOWN CLERK  
 CONCORD, MASSACHUSETTS