

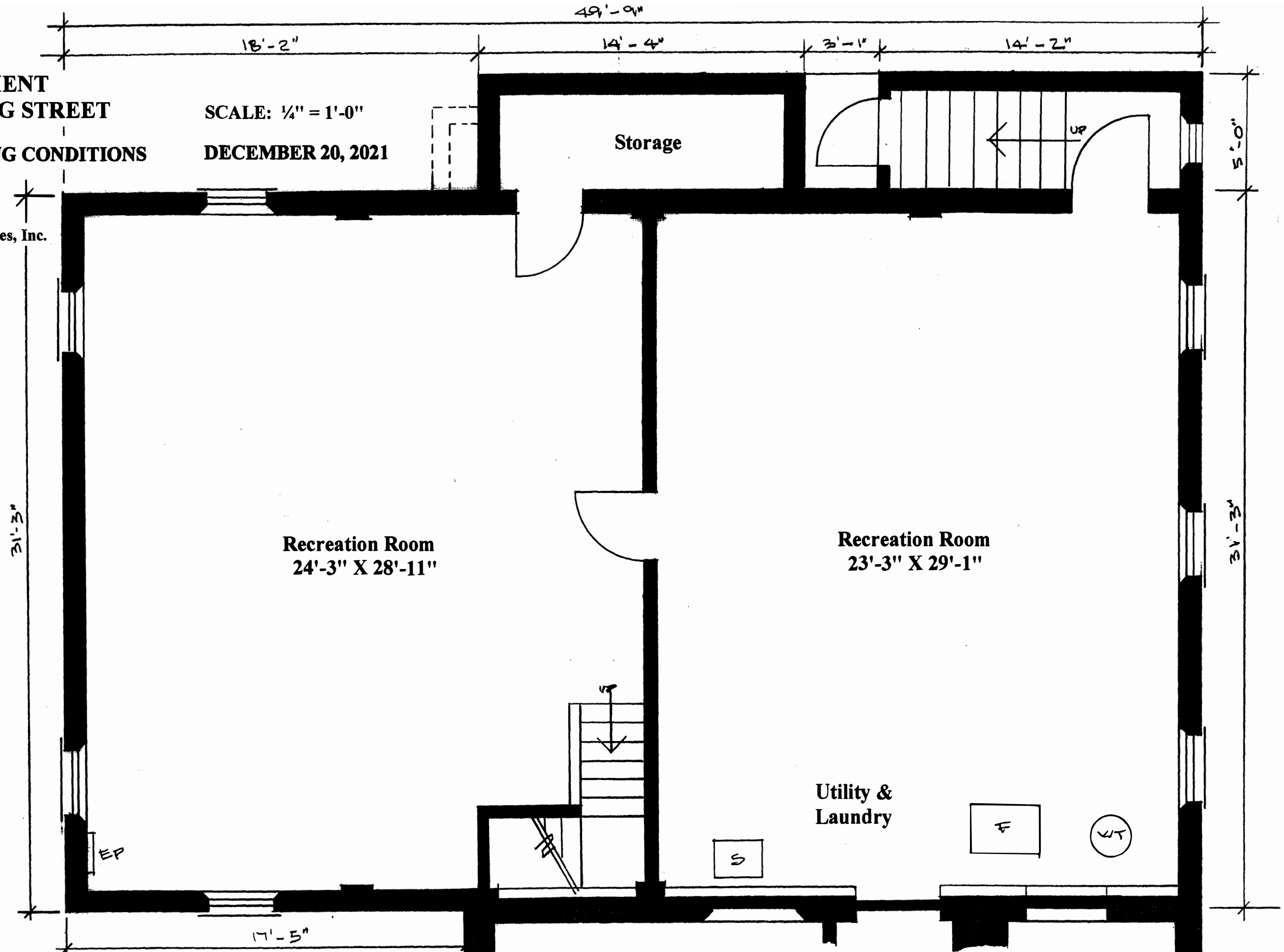
**BASEMENT
23 LANG STREET**

EXISTING CONDITIONS

SCALE: 1/4" = 1'-0"

DECEMBER 20, 2021

Prepared By:
Hurley Associates, Inc.

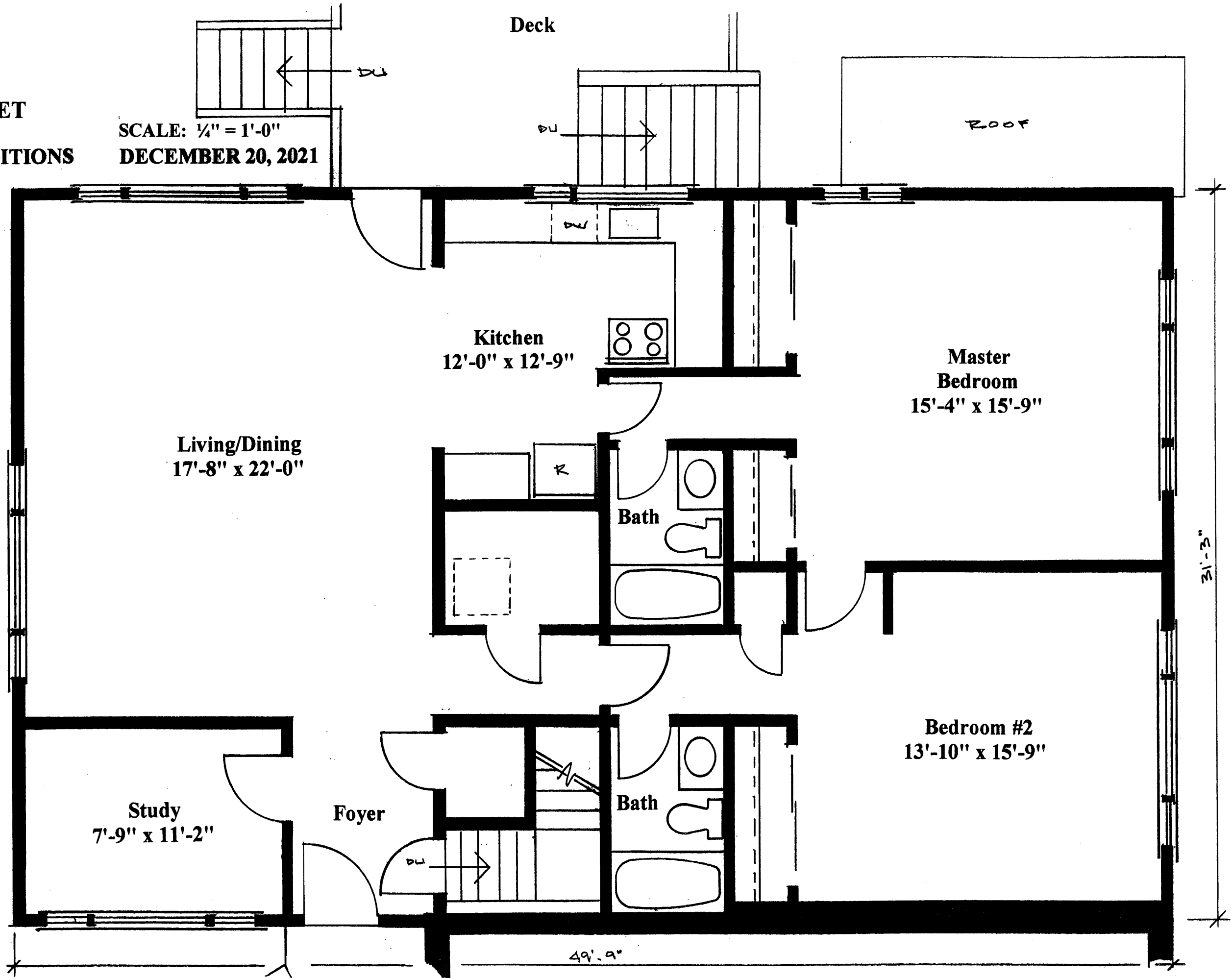


**FIRST FLOOR
23 LANG STREET**

EXISTING CONDITIONS

SCALE: 1/4" = 1'-0"
DECEMBER 20, 2021

Prepared By:
Hurley Associates, Inc.



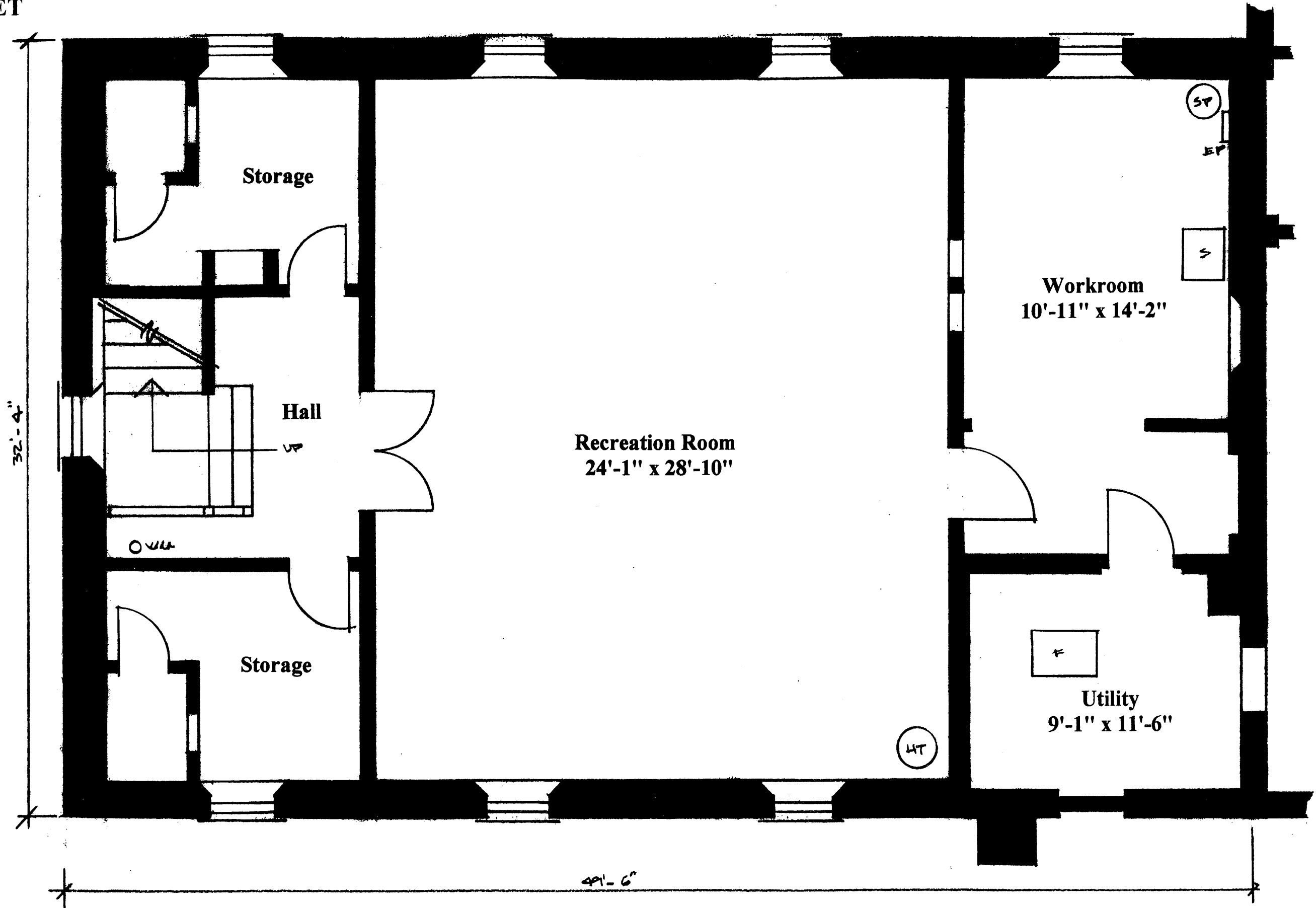
**BASEMENT
25 LANG STREET**

EXISTING CONDITIONS

DECEMBER 20, 2021

SCALE: 1/4" = 1'-0"

Prepared By:
Hurley Associates, Inc.



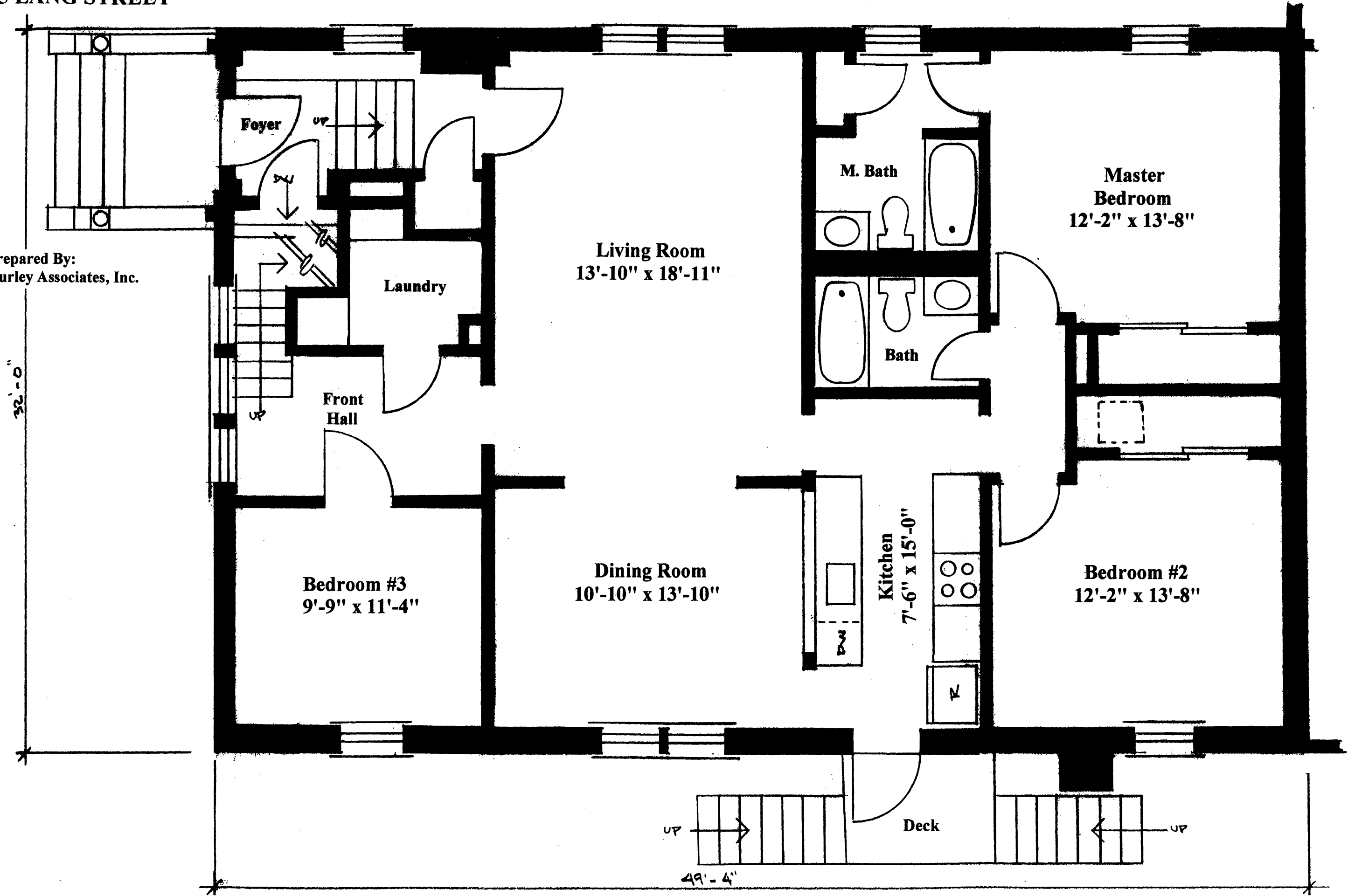
**FIRST FLOOR
25 LANG STREET**

EXISTING CONDITIONS

DECEMBER 20, 2021

SCALE: 1/4" = 1'-0"

Prepared By:
Hurley Associates, Inc.



32'-0"

49'-4"

**SECOND FLOOR
25 LANG STREET**

EXISTING CONDITIONS

DECEMBER 20, 2021

SCALE: 1/4" = 1'-0"

**Prepared By:
Hurley Associates, Inc.**

