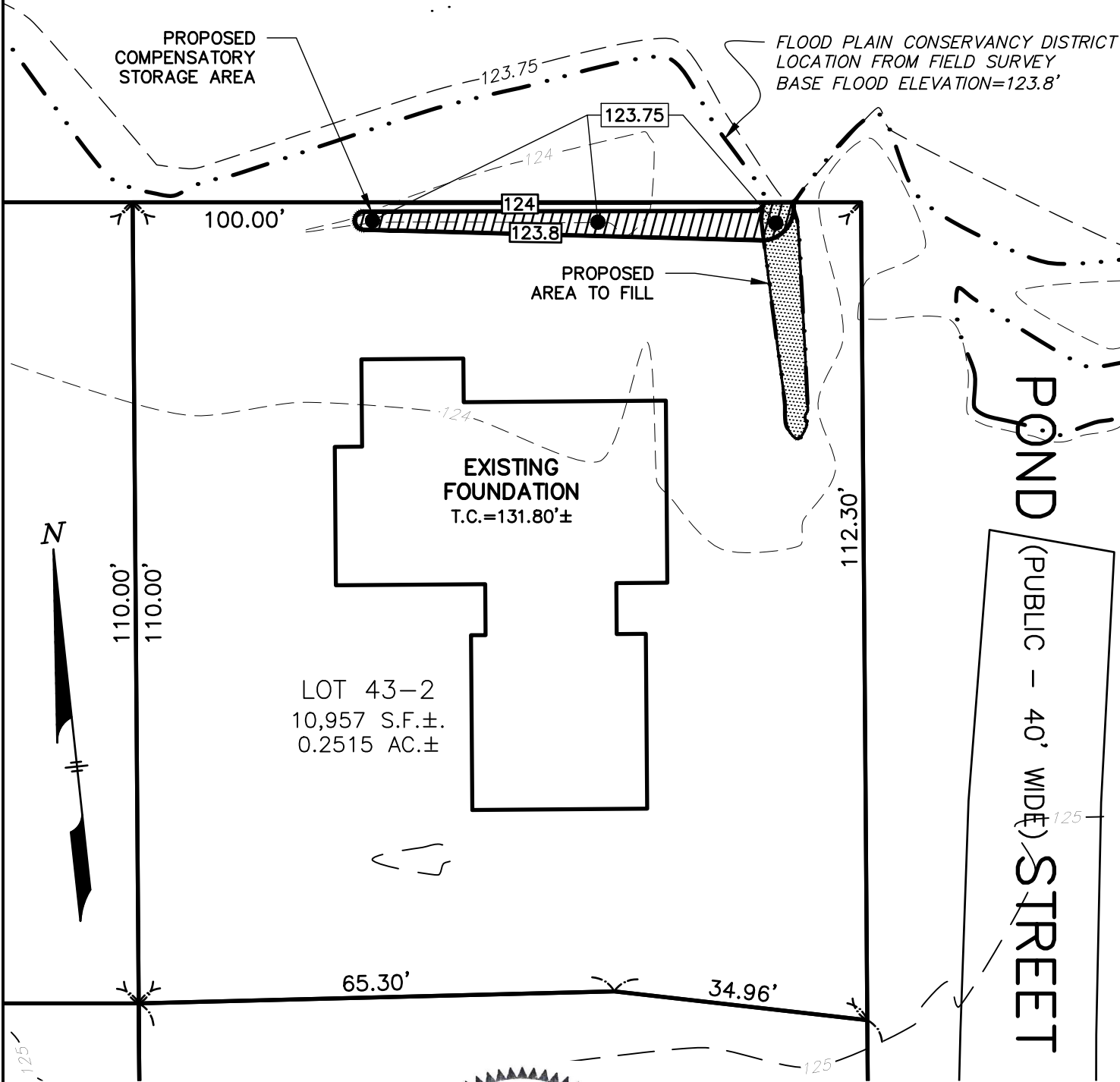




UNNAMED (PRIVATE - 40' WIDE) WAY

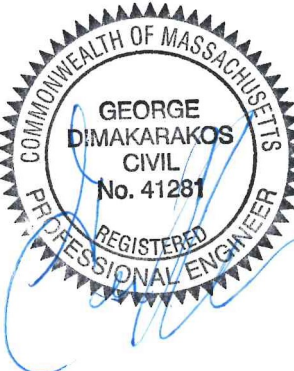
PROPOSED
COMPENSATORY
STORAGE AREA

FLOOD PLAIN CONSERVANCY DISTRICT
LOCATION FROM FIELD SURVEY
BASE FLOOD ELEVATION=123.8'



LEGEND:

-  COMPENSATORY FLOOD STORAGE
-  FILLED FLOOD STORAGE



SITE DEVELOPMENT PLAN
IN
CONCORD, MASSACHUSETTS
SCALE: 1"=20' OCTOBER 25, 2021
STAMSKI AND McNARY, INC.
1000 MAIN STREET ACTON, MASSACHUSETTS
ENGINEERING - PLANNING - SURVEYING