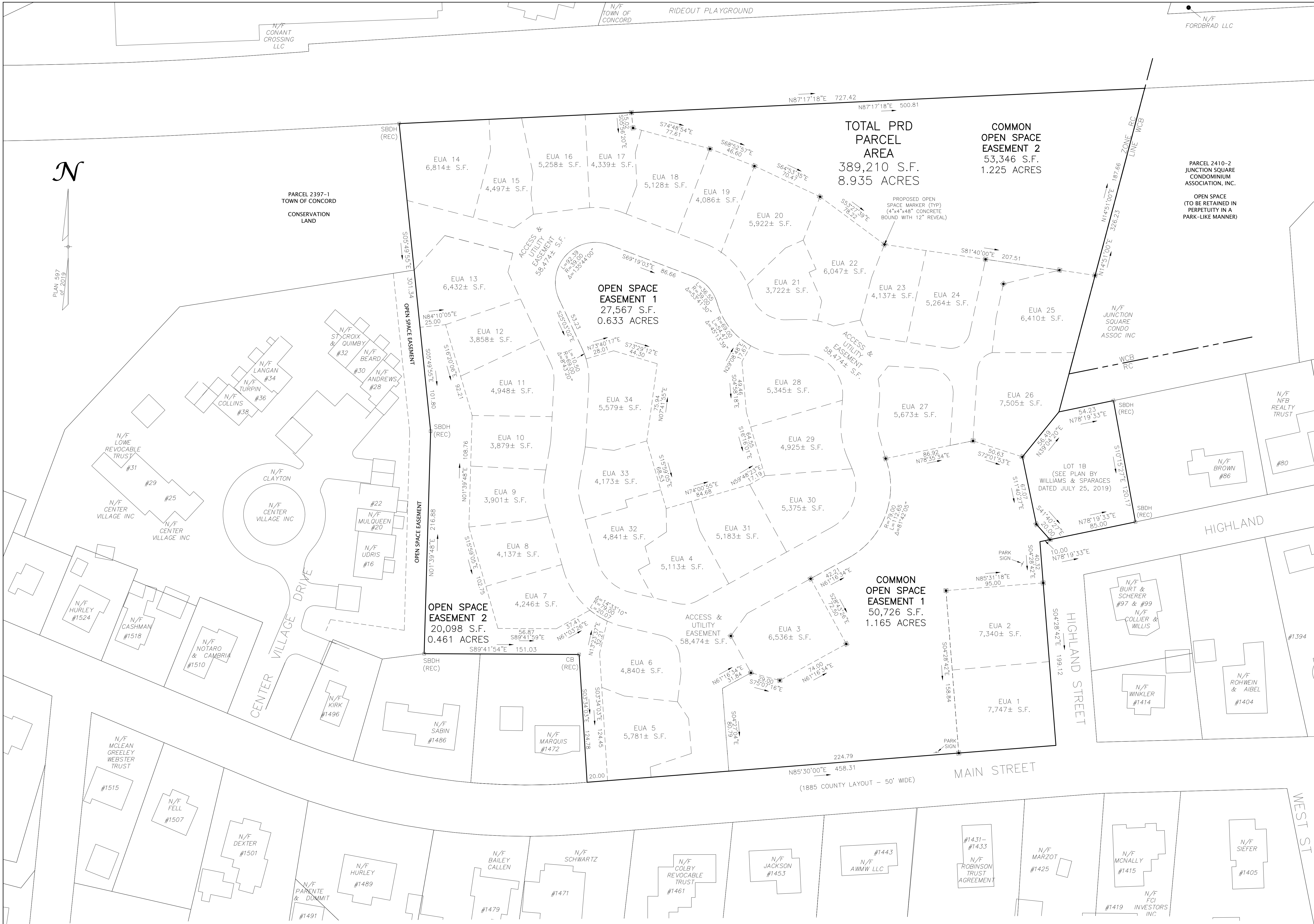


PLAN 597
of 2019



TOTAL PRD
PARCEL
AREA
389,210 S.F.
8.935 ACRES

COMMON
OPEN SPACE
EASEMENT 2
53,346 S.F.
1.225 ACRES

OPEN SPACE
EASEMENT 1
27,567 S.F.
0.633 ACRES

OPEN SPACE
EASEMENT 2
20,098 S.F.
0.461 ACRES

COMMON
OPEN SPACE
EASEMENT 1
50,726 S.F.
1.165 ACRES

PARCEL 2410-2
JUNCTION SQUARE
CONDOMINIUM
ASSOCIATION, INC.

OPEN SPACE
(TO BE RETAINED IN
PERPETUITY IN A
PARK-LIKE MANNER)



Owner:
Faye Erhard Hayes
1450 Main Street
Concord, MA 01742

Applicant:
Symes Development &
Permitting, LLC
50 Dodge Street, Suite 202
Beverly, MA 01915

Designed By: RJH
Drawn By: RJH
Reviewed By: RJH
Project Manager: RJH
Job File Number: CONC-0020
Drawing File Folder: MAIN0020

 Drawing Issued for Review Only
 Drawing Issued for Permit
 Drawing Issued for Construction

SEAL
**PERMITTING SET
NOT FOR
CONSTRUCTION
(12-9-2019)**

LAYOUT PLAN
CENTER & MAIN
1440 MAIN STREET, CONCORD, MA

6	REVISED DECEMBER 9, 2019 (PARK AREA)
5	REVISED NOVEMBER 12, 2019 (Swelling Unit Reduction)
4	REVISED OCTOBER 18, 2019 (Planner's Report & CIP Peer Review)
3	REVISED JUNE 14, 2019
2	REVISED MARCH 26, 2019 (1-Cur Units 12, 15, 17, 19, 23 & 36)
1	REVISED MARCH 12, 2019

SCALE: 1"=40'
0' 20' 40' 80'

DRAWING: 3-1
SHEET 3 OF 12
DECEMBER 6, 2018