

LEGEND:

- N/F NOW OR FORMERLY OVERHEAD WIRES
- TREE TREE
- UP UTILITY POLE
- GG+ GAS GATE
- G GAS SERVICE (BURIED)
- WG+ WATER GATE
- W WATER SERVICE (BURIED)
- DMH DRAIN MANHOLE
- D SUB-SURFACE DRAIN LINE
- EXISTING CONTOUR
- EXISTING CONTOUR
- LIGHTPOLE
- WETLAND FLAG
- 99X9 SPOT ELEVATION
- STONE WALL
- EDGE OF PAVEMENT
- SUBCATCHMENT DIVIDE
- TIME OF CONCENTRATION
- 32B WAREHAM LOAMY FINE SAND
- 256A DEERFIELD LOAMY SAND

ZONING DISTRICT

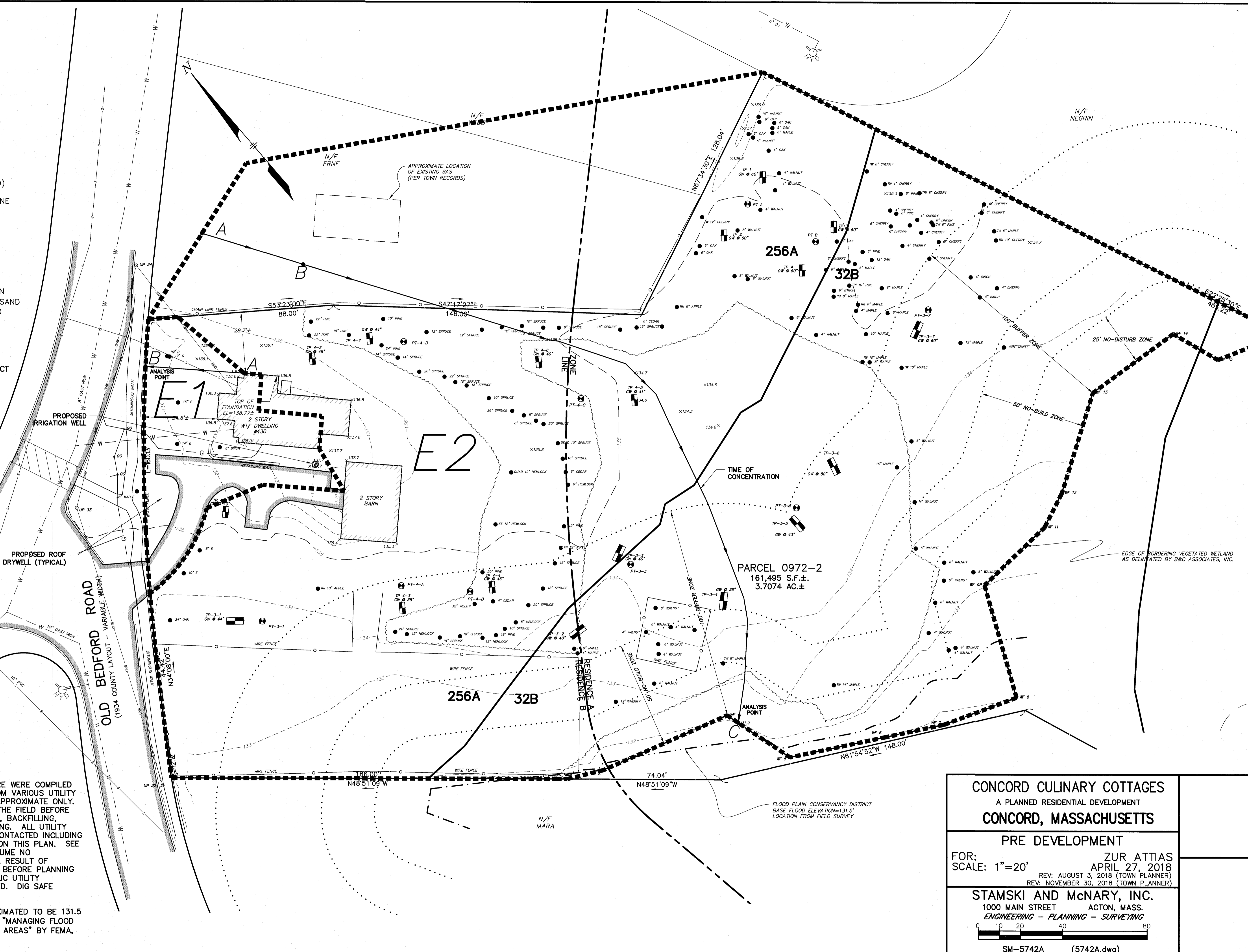
- RESIDENCE B
- RESIDENCE A
- GROUNDWATER CONSERVANCY DISTRICT
- FLOODPLAIN CONSERVANCY DISTRICT
- WETLANDS CONSERVANCY DISTRICT

DATUM

N.A.V.D OF 1988.

NOTES:

- 1) ALL UNDERGROUND UTILITIES SHOWN HERE WERE COMPILED ACCORDING TO AVAILABLE RECORD PLANS FROM VARIOUS UTILITY COMPANIES AND PUBLIC AGENCIES AND ARE APPROXIMATE ONLY. ACTUAL LOCATIONS MUST BE DETERMINED IN THE FIELD BEFORE DESIGNING, EXCAVATING, BLASTING, INSTALLING, BACKFILLING, GRADING, PAVEMENT RESTORATION OR REPAIRING. ALL UTILITY COMPANIES, PUBLIC AND PRIVATE, MUST BE CONTACTED INCLUDING THOSE IN CONTROL OF UTILITIES NOT SHOWN ON THIS PLAN. SEE CHAPTER 370, ACTS OF 1963 MASS. WE ASSUME NO RESPONSIBILITY FOR DAMAGES INCURRED AS A RESULT OF UTILITIES OMITTED OR INACCURATELY SHOWN. BEFORE PLANNING FUTURE CONNECTIONS THE APPROPRIATE PUBLIC UTILITY ENGINEERING DEPARTMENT MUST BE CONSULTED. DIG SAFE TELEPHONE No. 1-888-344-7233.
- 2) ZONE A BASE FLOOD ELEVATION APPROXIMATED TO BE 131.5 IN ACCORDANCE WITH METHODS DESCRIBED IN "MANAGING FLOOD PLAIN DEVELOPMENT IN APPROXIMATE ZONE A AREAS" BY FEMA, DATED APRIL 1995.



<p>CONCORD CULINARY COTTAGES A PLANNED RESIDENTIAL DEVELOPMENT CONCORD, MASSACHUSETTS</p>	
<p>PRE DEVELOPMENT</p>	
<p>FOR: SCALE: 1"=20'</p>	<p>ZUR ATTIAS APRIL 27, 2018 REV: AUGUST 3, 2018 (TOWN PLANNER) REV: NOVEMBER 30, 2018 (TOWN PLANNER)</p>
<p>STAMSKI AND McNARY, INC. 1000 MAIN STREET ACTON, MASS. ENGINEERING - PLANNING - SURVEYING</p>	
<p>0 10 20 40 80 SM-5742A (5742A.dwg)</p>	

LEGEND:

- N/F NOW OR FORMERLY OVERHEAD WIRES
- TREE
- TREE LINE
- UP UTILITY POLE
- GG* GAS GATE
- G GAS SERVICE (BURIED)
- WG* WATER GATE
- W WATER SERVICE (BURIED)
- DMH DRAIN MANHOLE
- D SUB-SURFACE DRAIN LINE
- EXISTING CONTOUR
- - - EXISTING CONTOUR
- ☆ LIGHTPOLE
- △ WETLAND FLAG
- 99X9 SPOT ELEVATION
- STONE WALL
- EDGE OF PAVEMENT
- SUBCATCHMENT DIVIDE
- TIME OF CONCENTRATION
- 32B WAREHAM LOAMY FINE SAND
- 256A DEERFIELD LOAMY SAND

ZONING DISTRICT

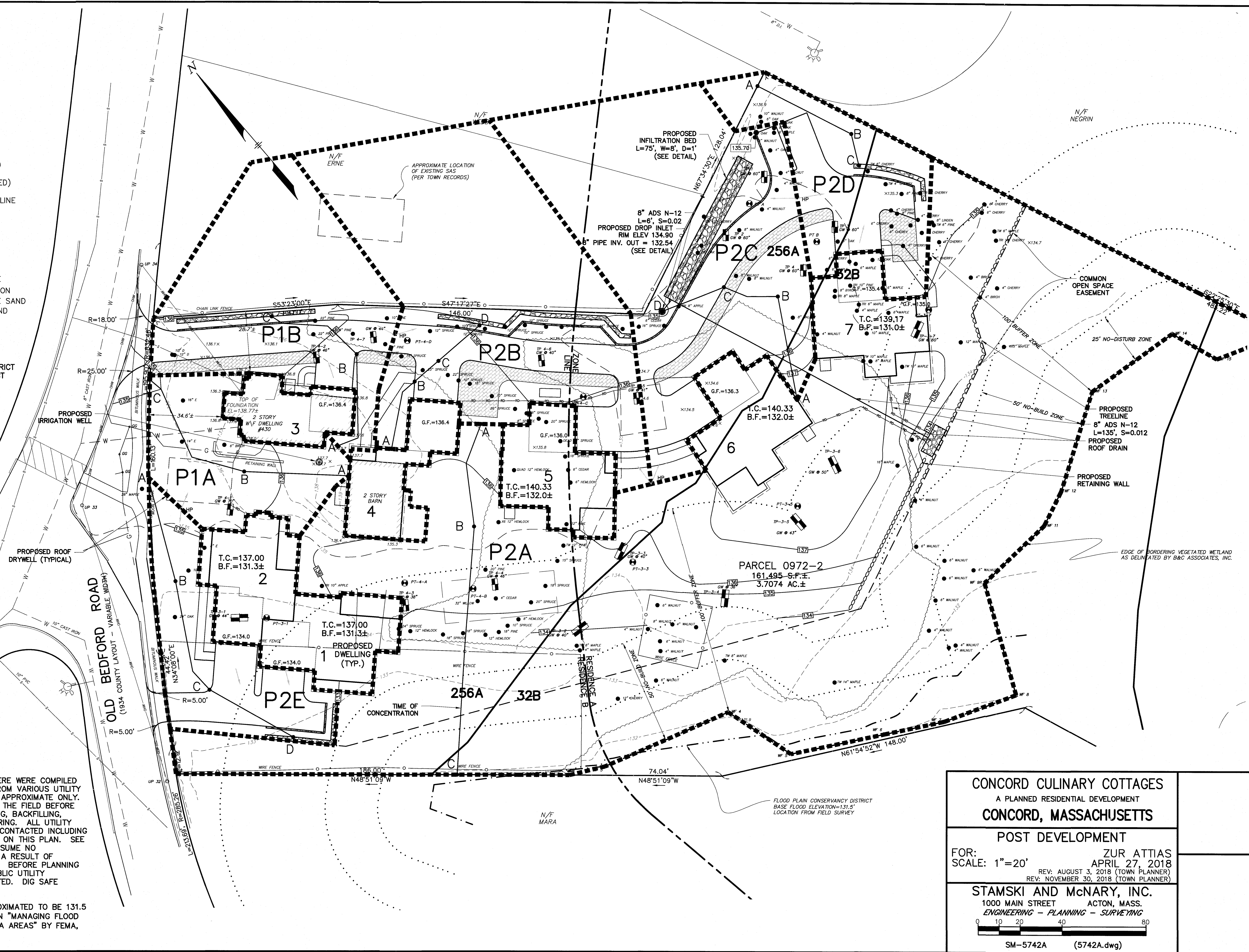
- RESIDENCE B
- RESIDENCE A
- GROUNDWATER CONSERVANCY DISTRICT
- FLOODPLAIN CONSERVANCY DISTRICT
- WETLANDS CONSERVANCY DISTRICT

DATUM

N.A.V.D OF 1988.

NOTES:

- 1) ALL UNDERGROUND UTILITIES SHOWN HERE WERE COMPILED ACCORDING TO AVAILABLE RECORD PLANS FROM VARIOUS UTILITY COMPANIES AND PUBLIC AGENCIES AND ARE APPROXIMATE ONLY. ACTUAL LOCATIONS MUST BE DETERMINED IN THE FIELD BEFORE DESIGNING, EXCAVATING, BLASTING, INSTALLING, BACKFILLING, GRADING, PAVEMENT RESTORATION OR REPAIRING. ALL UTILITY COMPANIES, PUBLIC AND PRIVATE, MUST BE CONTACTED INCLUDING THOSE IN CONTROL OF UTILITIES NOT SHOWN ON THIS PLAN. SEE CHAPTER 370, ACTS OF 1963 MASS. WE ASSUME NO RESPONSIBILITY FOR DAMAGES INCURRED AS A RESULT OF UTILITIES OMITTED OR INACCURATELY SHOWN. BEFORE PLANNING FUTURE CONNECTIONS THE APPROPRIATE PUBLIC UTILITY ENGINEERING DEPARTMENT MUST BE CONSULTED. DIG SAFE TELEPHONE No. 1-888-344-7233.
- 2) ZONE A BASE FLOOD ELEVATION APPROXIMATED TO BE 131.5 IN ACCORDANCE WITH METHODS DESCRIBED IN "MANAGING FLOOD PLAIN DEVELOPMENT IN APPROXIMATE ZONE A AREAS" BY FEMA, DATED APRIL 1995.



<p>CONCORD CULINARY COTTAGES A PLANNED RESIDENTIAL DEVELOPMENT CONCORD, MASSACHUSETTS</p>	
<p>POST DEVELOPMENT</p>	
<p>FOR: ZUR ATTIAS SCALE: 1"=20'</p>	<p>APRIL 27, 2018 REV: AUGUST 3, 2018 (TOWN PLANNER) REV: NOVEMBER 30, 2018 (TOWN PLANNER)</p>
<p>STAMSKI AND McNARY, INC. 1000 MAIN STREET ACTON, MASS. ENGINEERING - PLANNING - SURVEYING</p>	
<p>0 10 20 40 60 80 SM-5742A (5742A.dwg)</p>	