



TOWN OF CONCORD

Town Manager's Report

Week of: November 19, 2018

AARP Age Friendly Survey

Last call for surveys! The AARP surveys will be available through November 21st when the survey will close.

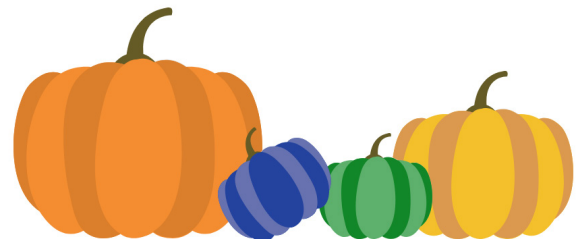
We are looking for Concord residents 50 and over to participate in the Town's AARP Age-Friendly Survey. This will help ensure that the Town's services, initiatives and programs continue to align with the older resident's evolving needs.

To take the survey online please visit:
concordma.gov/age-friendly-survey

Paper copies are also available at the Town Clerk's Office or at the Council on Aging.

Town Thanksgiving Hours

Town Offices will be closed for Thanksgiving on Thursday, November 22nd as well as Friday the 23rd. Please note, the Library will be closing at 6pm on Wednesday the 21st.



Gerow Park Survey

We want to hear from you! The property off 369 Commonwealth Ave. in Concord is being developed as an active recreation area referred to as 'Gerow Park.' The proximity to Warner's Pond and the Bruce Freeman Rail Trail (BFRT) make the park a desirable location for many different types of activities. Please complete the following survey to help inform what the community wants to see at the park.

<https://www.surveymonkey.com/r/KVKBZYZ>



TAKE THE SURVEY: [HTTPS://WWW.SURVEYMONKEY.COM/R/KVKBZYZ](https://www.surveymonkey.com/r/KVKBZYZ)

Holiday Gift Giving Program

Each year, the town's Community Services Division, in collaboration with the Concord-Carlisle Community Chest, organizes a town-wide Holiday Gift Giving Program to provide lower-income Concord residents an opportunity to 'shop' for a few gifts to give to their children in celebration of the holidays. This year, we are once again seeing a steep increase in need throughout our community. While we continue to work diligently to ensure we have enough gifts for all the children in the program, we are in need of a bit more help this upcoming holiday season.

If you are able, we would greatly appreciate any donations of new and unwrapped gifts. We are looking for toys, games, gift cards, etc. for children and young adults up to age 17. Typically, we receive many donations of toys and dolls for younger-aged children, which are always welcome. But our 'inventory' for teens (ages 13-17) or tweens (ages 9-12) is usually quite slim. Of course all donations, for any age group, are always greatly appreciated.

Donations may be placed in the large wrapped boxes you will see around town located at: the Town House, the Beede Center, the Concord-Carlisle Community Chest located at 19 Main Street, Cambridge Trust at 75 Main Street, or in the box in the lobby of 55 Church Street in West Concord.

We thank you in advance for your consideration. Please know that if you are able to donate something to this cause, it will be going to a neighbor in need. If you have any questions about the program, or know someone in Concord who is in need of assistance, please contact Bonny Wilbur, Community Services Coordinator, tel. 978-318-3034, bwilbur@concordma.gov

On behalf of the Human Services Team for the Town of Concord, we wish you a very Happy Holiday season!



Building and Health Departments Closed on 27th

The Building and Health Departments will be closed on Tuesday November 27th to move back into their second floor space at 133 Keyes Road. They will reopen the 28th.

Natural Resources

Trails Committee Chair Bob White and Conservation Crew installed the picnic tables at the Baker Avenue picnic area this week. Construction on the parking area should be completed in the few couple weeks.

