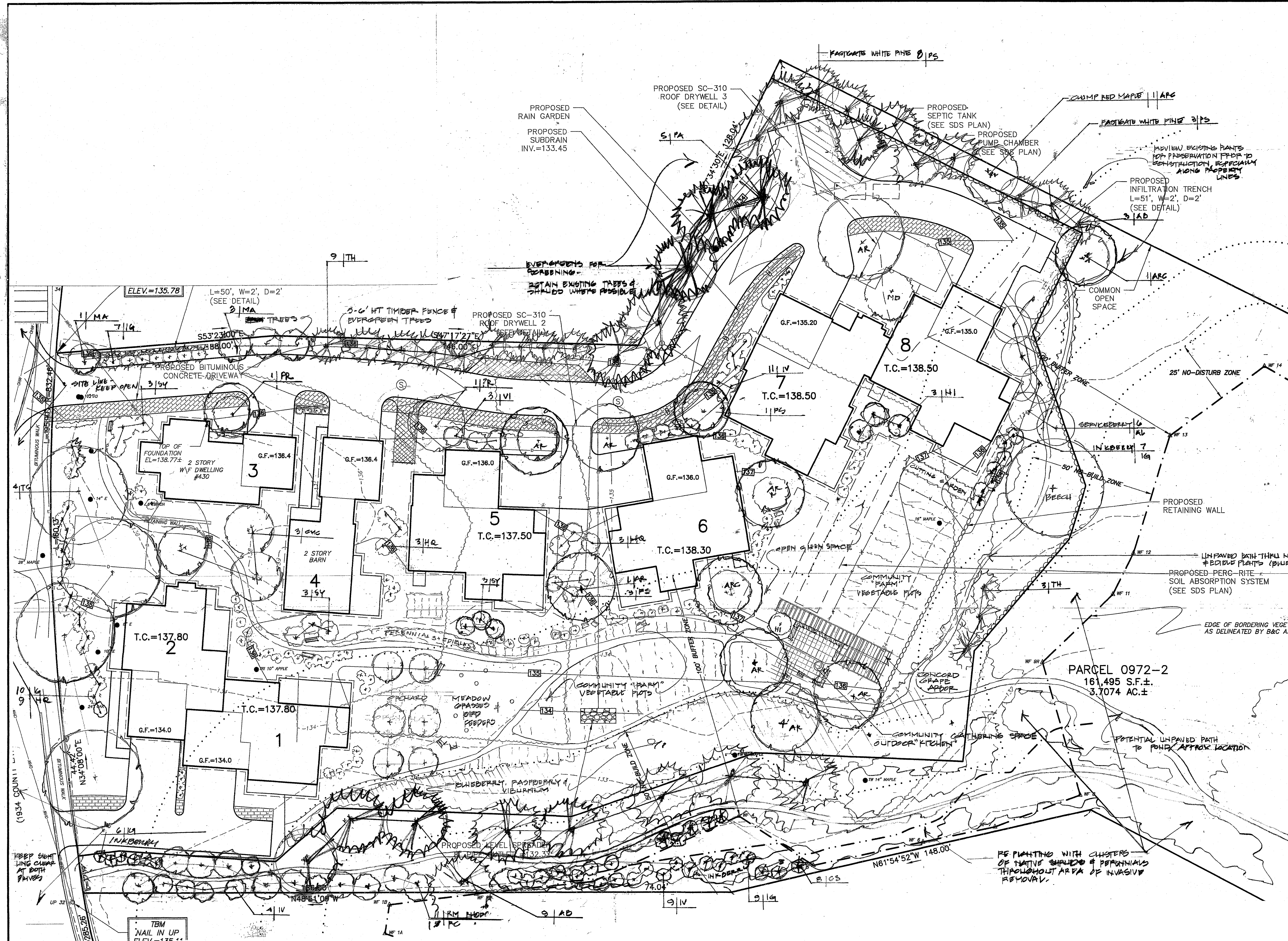


PLANT LIST- Preliminary for Concord Culinary Cottages

- Plants must be approved by landscape architect (LA). Substitutions by LA only shall be made as needed, based on availability and condition of plant material.
 - The majority of plants listed are native or naturalized species.
 - * Plants with edible fruit

Symbol/Botanical Name	Common Name	No.	Size	Remarks
Deciduous Trees				
AB/Abies balsamea	Balsam Fir	2	2-8' Ht	
AS/Acer saccharum 'Green Mountain'	Green Mountain Sugar Maple	2	2.5-3' C	
AR/Acer rubrum 'Red Sunset'	Red Sunset Red Maple	2	2.5-3' C	
ARC/Acer rubrum 'Red Sunset'	Clump Red Maple	2	7-8' Clump	
BN/Betula nigra 'Heritage'	Heritage River Birch	1	8-10' Clump	
CA/Cornus alternifolia	Pagoda Dogwood	1	7-8' Ht	
*CMC/Cornus mas	Clump Cornelian Cherry	2	7-8' Clump	
FG/Fagus	Beech	1	2-2.5' C	
SA/Sassafras albidum	Common Sassafras	1	#5	
TS/THUJA COCCATA	WINDEN	4	3-4.5' C	
Evergreen Trees				
AB/Abies balsamea	Balsam Fir	12	2-8' Ht @ 10' HT	
PS/Pinus strobus 'Fastigata'	Fastigate White Pine	8	2-8' @ 10' HT	
PA/PICEA ABIES	NORWAY SPRUCE	5	8-10' HT	
Shrubs				
AL/Amelanchier Canadensis 'Autumn Brilliance'	Serviceberry	6	4.5' Ht	White flowers in early spring; black berries
CS/Cornus sericea 'Ivory Halo'	Ivory Halo Redtwig Dogwood	8	2-3' Ht	Red stems in winter; white fls in spring
FS/Forsythia 'Lynwood Gold'	Cyanwood Gold Forsythia	3	3-4' Ht	
HA/Hamamelis	Witchhazel	1	4.5' Ht	Multi-stem
RM/Rhododendron maximum	Rosebay Rhododendron	11	3-4' Ht	
RC/Rhododendron maximum 'Roseum'	Roseum Rosebay Rhododendron	1	2.5-3' Ht	
HI/Hibiscus syriacus	Rose of Sharon	4	5-6' Ht	
HQ/Hydangea quercifolia	Oakleaf Hydrangea	15	3-4' Ht	
IG/Illex glabra 'Shamrock'	Shamrock Inkberry	3	3-3.5' Ht	Evergreen; black berries
IV/Villex verticillata 'Red Sprite'	Red Sprite Winterberry	2	2-2.5' Ht	Red berries in winter
*PB/Prunus maritima	Beach Plum	1	#5	
RH/Rhus typhina	Staghorn Sumac	1	#3	
RL/Rhus aromatica 'Grow Low'	Grow Low Sumac	1	#1	
SY/Syringa vulgaris var.	Common Lilac/Varieties TBD	7	4-5' Ht	Full/LA to select var. at nursery
*VB/Viburnum prunifolium	Blackhaw Viburnum 3-4' Ht	3	3-4' Ht	
*VV/Viburnum trilobum	American Cranberry Viburnum	2	#5	
		50	#1	
Fruit Trees, Shrubs & Vines				
*Apple		2	#10	
*Pear		2	#10	
*Raspberry		25	#1	
*Plum		1	#10	
*Blueberry (High & Low Bush)		100	#1	
*Concord Grape		2	#2	
Groundcover/Herbaceous Plants/Perennials - T. B. D.				
A/Asclepias	Milkwild	1	Gal	Monarch butterfly & Hummingbird attractor
DAY/Hemerocallis 'Returns' var.	Returns Daylily	2	Gal	
Fern: Cnemidion ciliatum	Cinnamon Fern	1	Gal	Hummingbird attractor
GA/Gaillardia procumbens	Wintergreen	1	Gal	
SS/Polygonatum 'Variegatum'	Variegated Solomon's Seal	1	Gal	
ADDITIONAL TREES				
TH/THUJA 'GREEN GLANT' AEROLENTAE		12	8-10'	
MA/MAVUS 'RED BERRY' CRAB		4	2-2.5' C	
MD/MD/ 'CONCORD NYMAN GRAB		1	2-2.5' C	
PR/PRAUNUS SUBSEROTINA 'AUTUNNAUS'		2	3/4-3/2'	FLOWERING CHERRY



CONCORD ZONING BOARD OF APPEALS

I, CLERK OF THE TOWN OF CONCORD, MASSACHUSETTS HEREBY CERTIFY THE NOTICE OF APPROVAL OF THIS PLAN BY THE CONCORD PLANNING BOARD HAS BEEN RECEIVED AND RECORDED AT THIS OFFICE AND NO APPEAL WAS RECEIVED DURING THE TWENTY DAYS NEXT AFTER SUCH RECEIPT AND RECORDING OF SAID NOTICE.

APPROVAL DATE: _____
 ENDORSEMENT DATE: _____

DATE: _____
 TOWN CLERK: _____

CONCORD CULINARY HOMES
 A PLANNED RESIDENTIAL DEVELOPMENT
CONCORD, MASSACHUSETTS

SITE DEVELOPMENT PLAN

FOR: ZUR ATTIAS
 SCALE: 1"=20' APRIL 27, 2018

KIM AHERN LANDSCAPE ARCHITECTS
 40 FOSTER STREET LITTLETON, MASSACHUSETTS 01460

STAMSKI AND McNARY, INC.
 1000 MAIN STREET ACTON, MASS.
 ENGINEERING - PLANNING - SURVEYING

REV: 6-17-18 14

Kim Ahern

